

For Research Use Only

TOB1 Recombinant antibody, PBS Only (Detector)

Catalog Number: 83944-2-PBS



Basic Information

Catalog Number: 83944-2-PBS	GenBank Accession Number: BC031406	Purification Method: Protein A purification
Size: 100ug , Concentration: 1 mg/ml by Nanodrop;	GeneID (NCBI): 10140	CloneNo.: 241043A9
Source: Rabbit	UNIPROT ID: P50616	
Isotype: IgG	Full Name: transducer of ERBB2, 1	
Immunogen Catalog Number: AG6714	Calculated MW: 38 kDa	

Applications

Tested Applications:
IHC, IF/ICC, Cytometric bead array, Indirect ELISA

Species Specificity:
human

Product Information

83944-2-PBS targets TOB1 as part of a matched antibody pair:

MP00930-3: 83944-1-PBS capture and 83944-2-PBS detection (validated in Cytometric bead array)

Unconjugated rabbit recombinant monoclonal antibody in PBS only (BSA and azide free) storage buffer at a concentration of 1 mg/mL, ready for conjugation. Created using Proteintech's proprietary in-house recombinant technology. Recombinant production enables unrivalled batch-to-batch consistency, easy scale-up, and future security of supply.

This conjugation ready format makes antibodies ideal for use in many applications including: ELISAs, multiplex assays requiring matched pairs, mass cytometry, and multiplex imaging applications. Antibody use should be optimized by the end user for each application and assay.

Background Information

TOB1, also known as APRO6 or TROB1, is a member of the transducer of erbB-2/B-cell translocation gene protein family. Members of this family are anti-proliferative factors that have the potential to regulate cell growth. The TOB1 protein has a large additional C-terminal region, which contains PAM2 motifs that mediate interactions with poly(A)-binding proteins. It is mainly located in the cell nucleus and will transfer between the cell nucleus and the cytoplasm. The more phosphorylation, the more obvious the cytoplasmic localization.

Storage

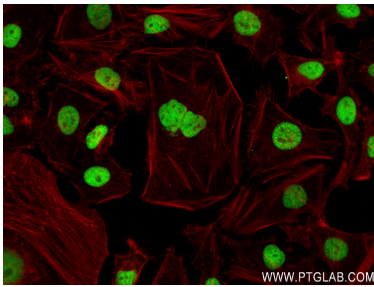
Storage:
Store at -80°C.

Storage Buffer:
PBS only, pH7.3

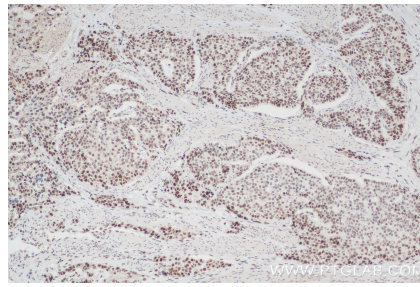
For technical support and original validation data for this product please contact:
T: 1 (888) 4PTGLAB (1-888-478-4522) (toll free in USA), or 1(312) 455-8498 (outside USA)
E: proteintech@ptglab.com
W: ptglab.com

This product is exclusively available under Proteintech Group brand and is not available to purchase from any other manufacturer.

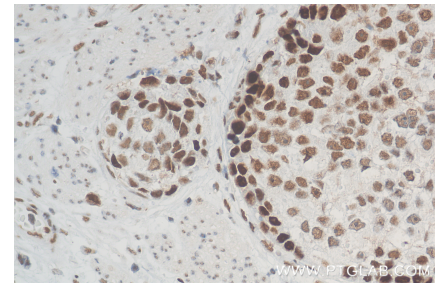
Selected Validation Data



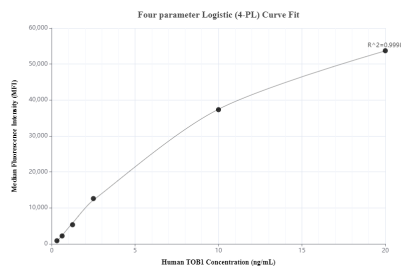
Immunofluorescent analysis of (4% PFA) fixed HeLa cells using TOB1 antibody (83944-2-RR, Clone: 241043A9) at dilution of 1:0 and CoraLite®488-Conjugated AffiniPure Goat Anti-Rabbit IgG(H+L) (SA00013-2), CL594-Phalloidin (red). This data was developed using the same antibody clone with 83944-2-PBS in a different storage buffer formulation.



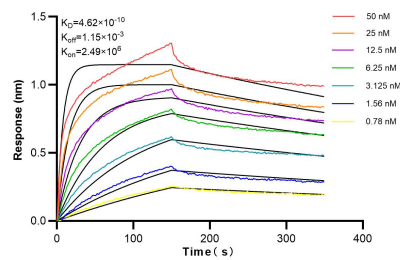
Immunohistochemical analysis of paraffin-embedded human stomach cancer tissue slide using 83944-2-RR (TOB1 antibody) at dilution of 1:1000 (under 10x lens). Heat mediated antigen retrieval with Tris-EDTA buffer (pH 9.0). This data was developed using the same antibody clone with 83944-2-PBS in a different storage buffer formulation.



Immunohistochemical analysis of paraffin-embedded human stomach cancer tissue slide using 83944-2-RR (TOB1 antibody) at dilution of 1:1000 (under 40x lens). Heat mediated antigen retrieval with Tris-EDTA buffer (pH 9.0). This data was developed using the same antibody clone with 83944-2-PBS in a different storage buffer formulation.



Cytometric bead array standard curve of MP00930-3, TOB1 Recombinant Matched Antibody Pair, PBS Only. Capture antibody: 83944-1-PBS. Detection antibody: 83944-2-PBS. Standard: Ag6714. Range: 0.313-20 ng/mL.



Biolayer interferometry (BLI) kinetic assays of 83944-2-RR against Human TOB1 were performed. The affinity constant is 0.462 nM.