

For Research Use Only

EOMES/TRB2 Recombinant antibody, PBS Only

Catalog Number: 83945-5-PBS



Basic Information

Catalog Number: 83945-5-PBS	GenBank Accession Number: NM_001278182	Purification Method: Protein A purification
Size: 100ug , Concentration: 1 mg/ml by Nanodrop;	GeneID (NCBI): 8320	CloneNo.: 241036D9
Source: Rabbit	UNIPROT ID: O95936	
Isotype: IgG	Full Name: eomesodermin homolog (Xenopus laevis)	
Immunogen Catalog Number: AG27634	Calculated MW: 73 aa	
	Observed MW: 67 kDa	

Applications

Tested Applications:
WB, IHC, IF/ICC, Indirect ELISA

Species Specificity:
human, mouse

Background Information

EOMES/TRB2 (also named Eomesodermin/Tbr2) encode T-box transcription factor expressed highly in the intermediate progenitor stage of the developing neuron. During migration of the neurons, radial glia divide and migrate towards the surface of the cerebral cortex, there are three stages of cellular development: radial glia, intermediate progenitors, and postmitotic projection neurons. Radial glia express Pax6, while intermediate progenitor cells express Eomesodermin/Tbr2, and postmitotic projection neurons express Tbr1 (PMID:15634788; PMID:16320258). This process also called neurogenesis, and demonstrated that Eomesodermin/Tbr2 has been implicated in neurodevelopment. According to the mouse model, several articles showed that EOMES/TRB2 KO mice having proliferating cells decreased and having smaller upper cortical layers and a smaller sub ventricular zone in the brain (PMID:18940588). What's more, Eomesodermin/Tbr2 has also been found participating in immune response (PMID:20713880).

Storage

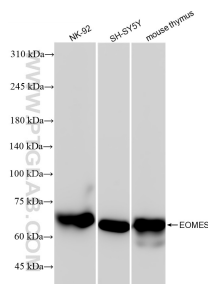
Storage:
Store at -80°C.

Storage Buffer:
PBS only

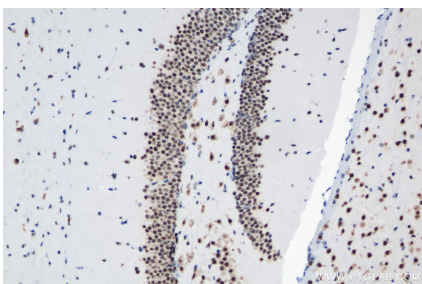
For technical support and original validation data for this product please contact:
T: 1 (888) 4PTGLAB (1-888-478-4522) (toll free in USA), or 1(312) 455-8498 (outside USA)
E: proteintech@ptglab.com
W: ptglab.com

This product is exclusively available under Proteintech Group brand and is not available to purchase from any other manufacturer.

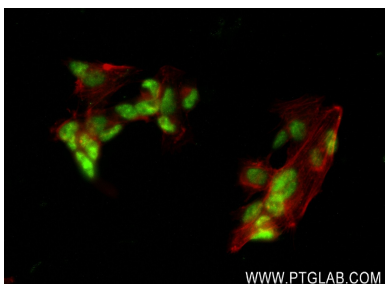
Selected Validation Data



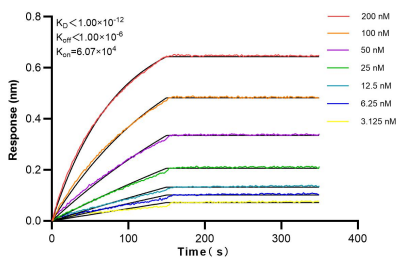
Various lysates were subjected to SDS PAGE followed by western blot with 83945-5-RR (EOMES antibody) at dilution of 1:10000 incubated at room temperature for 1.5 hours. This data was developed using the same antibody clone with 83945-5-PBS in a different storage buffer formulation.



Immunohistochemical analysis of paraffin-embedded mouse brain tissue slide using 83945-5-RR (EOMES/TBR2 antibody) at dilution of 1:1000 (under 20x lens). Heat mediated antigen retrieval with Tris-EDTA buffer (pH 9.0). This data was developed using the same antibody clone with 83945-5-PBS in a different storage buffer formulation.



Immunofluorescent analysis of (4% PFA) fixed SH-SY5Y cells using EOMES antibody (83945-5-RR, Clone: 241036D9) at dilution of 1:250 and CoraLite®488-Conjugated AffiniPure Goat Anti-Rabbit IgG(H+L) (SA00013-2), CL594-Phalloidin (red). This data was developed using the same antibody clone with 83945-5-PBS in a different storage buffer formulation.



Biolayer interferometry (BLI) kinetic assays of 83945-5-RR against Human EOMES were performed. The affinity constant is below 1 pM.