

For Research Use Only

# Mouse P-Selectin/CD62P Recombinant antibody, PBS Only (Capture/Detector)

Catalog Number: 83947-1-PBS



## Basic Information

<b>Catalog Number:</b> 83947-1-PBS	<b>GenBank Accession Number:</b> NM_011347.2	<b>Purification Method:</b> Protein A purification
<b>Size:</b> 100ug , Concentration: 1 mg/ml by Nanodrop;	<b>GeneID (NCBI):</b> 20344	<b>CloneNo.:</b> 240766A1
<b>Source:</b> Rabbit	<b>UNIPROT ID:</b> Q01102	
<b>Isotype:</b> IgG	<b>Full Name:</b> selectin, platelet	
	<b>Calculated MW:</b> 83 kDa	

## Applications

**Tested Applications:**  
Cytometric bead array, Sandwich ELISA, Indirect ELISA, Sample test

**Species Specificity:**  
mouse

## Product Information

83947-1-PBS targets P-Selectin/CD62P as part of a matched antibody pair:

MP00926-1: 83947-2-PBS capture and 83947-1-PBS detection (validated in Cytometric bead array)

MP00926-2: 83947-1-PBS capture and 83947-4-PBS detection (validated in Cytometric bead array, Sandwich ELISA)

MP00926-3: 83947-1-PBS capture and 83947-3-PBS detection (validated in Cytometric bead array)

Unconjugated rabbit recombinant monoclonal antibody in PBS only (BSA and azide free) storage buffer at a concentration of 1 mg/mL, ready for conjugation. Created using Proteintech's proprietary in-house recombinant technology. Recombinant production enables unrivalled batch-to-batch consistency, easy scale-up, and future security of supply.

This conjugation ready format makes antibodies ideal for use in many applications including: ELISAs, multiplex assays requiring matched pairs, mass cytometry, and multiplex imaging applications. Antibody use should be optimized by the end user for each application and assay.

## Storage

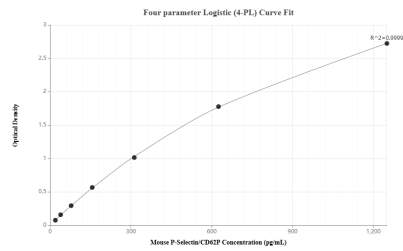
**Storage:**  
Store at -80°C.

**Storage Buffer:**  
PBS Only

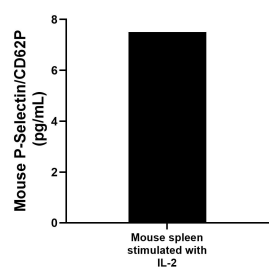
For technical support and original validation data for this product please contact:  
T: 1 (888) 4PTGLAB (1-888-478-4522) (toll free in USA), or 1(312) 455-8498 (outside USA)  
E: [proteintech@ptglab.com](mailto:proteintech@ptglab.com)  
W: [ptglab.com](http://ptglab.com)

This product is exclusively available under Proteintech Group brand and is not available to purchase from any other manufacturer.

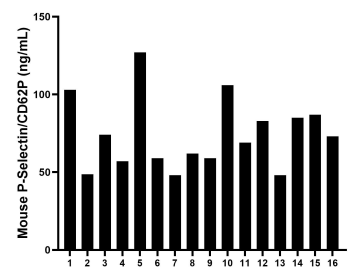
Selected Validation Data



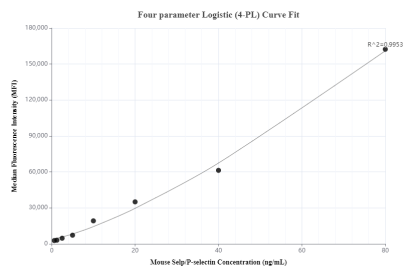
Sandwich ELISA standard curve of MP00926-2, Mouse P-Selectin/CD62P Recombinant Matched Antibody Pair - PBS only. 83947-1-PBS was coated to a plate as the capture antibody and incubated with serial dilutions of standard Eg0691. 83947-4-PBS was HRP conjugated as the detection antibody. Range: 19.5-1250 pg/mL



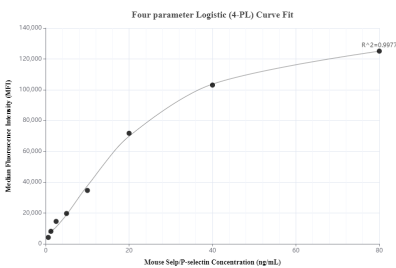
Mouse spleen cells ( $5 \times 10^6$  cells/mL) was cultured for 3 days in RPMI supplemented with 10% fetal bovine serum, 5  $\mu$ M  $\beta$ -mercaptoethanol, 2 mM L-glutamine, 100 U/mL penicillin, 100  $\mu$ g/mL streptomycin sulfate and stimulated with 10 ng/mL IL-2 for 3 days. An aliquot of the cell culture supernate was removed, assayed for mouse P-Selectin/CD62P, and measured 7.5 pg/mL



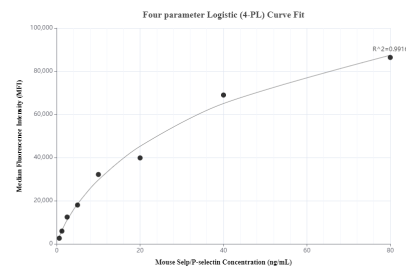
Serum of sixteen mice was measured. The mouse P-Selectin/CD62P concentration of detected samples was determined to be 74.29 ng/mL with a range of 48.00 - 127.00 ng/mL



Cytometric bead array standard curve of MP00926-1, MOUSE P-Selectin/CD62P Recombinant Matched Antibody Pair, PBS Only. Capture antibody: 83947-2-PBS. Detection antibody: 83947-1-PBS. Standard: Eg0691. Range: 0.625-80 ng/mL



Cytometric bead array standard curve of MP00926-2, MOUSE P-Selectin/CD62P Recombinant Matched Antibody Pair, PBS Only. Capture antibody: 83947-1-PBS. Detection antibody: 83947-4-PBS. Standard: Eg0691. Range: 0.625-80 ng/mL



Cytometric bead array standard curve of MP00926-3, MOUSE P-Selectin/CD62P Recombinant Matched Antibody Pair, PBS Only. Capture antibody: 83947-1-PBS. Detection antibody: 83947-3-PBS. Standard: Eg0691. Range: 0.625-80 ng/mL