

For Research Use Only

Mouse P-Selectin/CD62P Recombinant antibody, PBS Only (Detector)

Catalog Number: 83947-4-PBS



Basic Information

Catalog Number:

83947-4-PBS

Size:

100ug, Concentration: 1 mg/ml by Nanodrop;

Source:

Rabbit

Isotype:

IgG

GenBank Accession Number:

NM_011347.2

GeneID (NCBI):

20344

UNIPROT ID:

Q01102

Full Name:

selectin, platelet

Calculated MW:

83 kDa

Purification Method:

Protein A purification

CloneNo.:

240766G1

Applications

Tested Applications:

Cytometric bead array, Sandwich ELISA, Indirect ELISA, Sample test

Species Specificity:

mouse

Product Information

83947-4-PBS targets P-Selectin/CD62P as part of a matched antibody pair:

MP00926-2: 83947-1-PBS capture and 83947-4-PBS detection (validated in Cytometric bead array, Sandwich ELISA)

Unconjugated rabbit recombinant monoclonal antibody in PBS only (BSA and azide free) storage buffer at a concentration of 1 mg/mL, ready for conjugation. Created using Proteintech's proprietary in-house recombinant technology. Recombinant production enables unrivalled batch-to-batch consistency, easy scale-up, and future security of supply.

This conjugation ready format makes antibodies ideal for use in many applications including: ELISAs, multiplex assays requiring matched pairs, mass cytometry, and multiplex imaging applications. Antibody use should be optimized by the end user for each application and assay.

Storage

Storage:

Store at -80°C.

Storage Buffer:

PBS Only

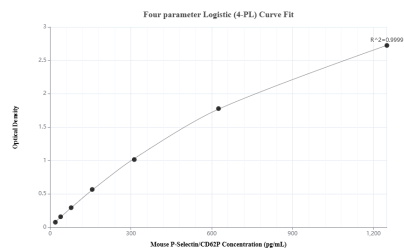
For technical support and original validation data for this product please contact:

T: 1 (888) 4PTGLAB (1-888-478-4522) (toll free in USA), or 1(312) 455-8498 (outside USA)

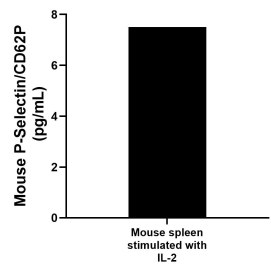
E: proteintech@ptglab.com
W: ptglab.com

This product is exclusively available under Proteintech Group brand and is not available to purchase from any other manufacturer.

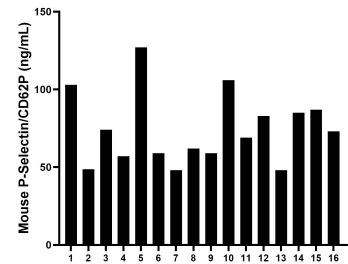
Selected Validation Data



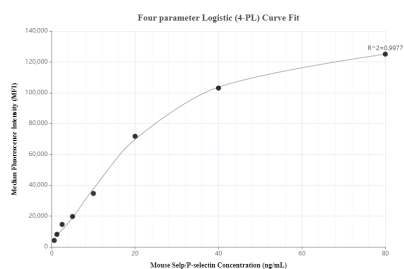
Sandwich ELISA standard curve of MP00926-2, Mouse P-Selectin/CD62P Recombinant Matched Antibody Pair - PBS only. 83947-1-PBS was coated to a plate as the capture antibody and incubated with serial dilutions of standard Eg0691. 83947-4-PBS was HRP conjugated as the detection antibody. Range: 19.5-1250 pg/mL



Mouse spleen cells (5×10^6 cells/mL) was cultured for 3 days in RPMI supplemented with 10% fetal bovine serum, 5 μ M β -mercaptoethanol, 2 mM L-glutamine, 100 U/mL penicillin, 100 μ g/mL streptomycin sulfate and stimulated with 10 ng/mL IL-2 for 3 days. An aliquot of the cell culture supernate was removed, assayed for mouse P-Selectin/CD62P, and measured 7.5 pg/mL



Serum of sixteen mice was measured. The mouse P-Selectin/CD62P concentration of detected samples was determined to be 74.29 ng/mL with a range of 48.00 - 127.00 ng/mL.



Cytometric bead array standard curve of MP00926-2, MOUSE P-Selectin/CD62P Recombinant Matched Antibody Pair, PBS Only. Capture antibody: 83947-1-PBS. Detection antibody: 83947-4-PBS. Standard: Eg0691. Range: 0.625-80 ng/mL