

For Research Use Only

ATG4D Recombinant antibody, PBS Only (Detector)

Catalog Number: 83951-3-PBS



Basic Information

Catalog Number: 83951-3-PBS	GenBank Accession Number: BC068992	Purification Method: Protein A purification
Size: 100ug , Concentration: 1 mg/ml by Nanodrop;	GeneID (NCBI): 84971	CloneNo.: 241035E10
Source: Rabbit	UNIPROT ID: Q86TLO	
Isotype: IgG	Full Name: ATG4 autophagy related 4 homolog D (S. cerevisiae)	
Immunogen Catalog Number: AG10177	Calculated MW: 474 aa, 53 kDa	

Applications

Tested Applications:
Cytometric bead array, Sandwich ELISA, Indirect ELISA, Sample test

Species Specificity:
human

Product Information

83951-3-PBS targets ATG4D as part of a matched antibody pair:

MP00902-1: 83951-2-PBS capture and 83951-3-PBS detection (validated in Cytometric bead array)

MP00902-2: 83951-1-PBS capture and 83951-3-PBS detection (validated in Cytometric bead array)

MP00902-4: 83951-5-PBS capture and 83951-3-PBS detection (validated in Sandwich ELISA)

Unconjugated rabbit recombinant monoclonal antibody in PBS only (BSA and azide free) storage buffer at a concentration of 1 mg/mL, ready for conjugation. Created using Proteintech's proprietary in-house recombinant technology. Recombinant production enables unrivalled batch-to-batch consistency, easy scale-up, and future security of supply.

This conjugation ready format makes antibodies ideal for use in many applications including: ELISAs, multiplex assays requiring matched pairs, mass cytometry, and multiplex imaging applications. Antibody use should be optimized by the end user for each application and assay.

Storage

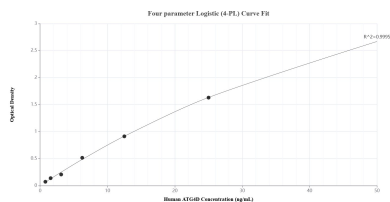
Storage:
Store at -80°C.

Storage Buffer:
PBS Only

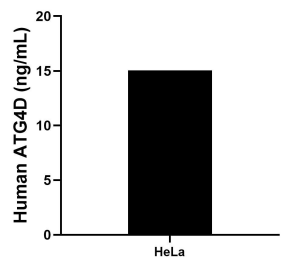
For technical support and original validation data for this product please contact:
T: 1 (888) 4PTGLAB (1-888-478-4522) (toll free in USA), or 1(312) 455-8498 (outside USA)
E: proteintech@ptglab.com
W: ptglab.com

This product is exclusively available under Proteintech Group brand and is not available to purchase from any other manufacturer.

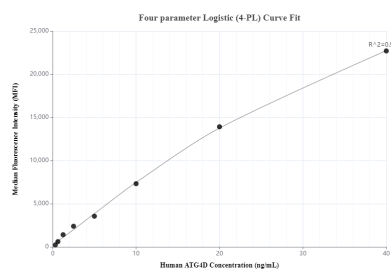
Selected Validation Data



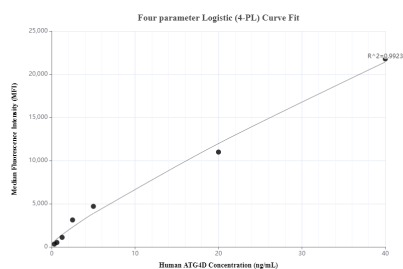
Sandwich ELISA standard curve of MP00902-4, Human ATG4D Recombinant Matched Antibody Pair - PBS only. 83951-5-PBS was coated to a plate as the capture antibody and incubated with serial dilutions of standard Ag10177. 83951-3-PBS was HRP conjugated as the detection antibody. Range: 0.781-50 ng/mL.



The mean ATG4D concentration was determined to be 15.05 ng/mL in HeLa cell extract based on a 1.30 mg/mL extract load.



Cytometric bead array standard curve of MP00902-1, ATG4D Recombinant Matched Antibody Pair, PBS Only. Capture antibody: 83951-2-PBS. Detection antibody: 83951-3-PBS. Standard: Ag10177. Range: 0.313-40 ng/mL.



Cytometric bead array standard curve of MP00902-2, ATG4D Recombinant Matched Antibody Pair, PBS Only. Capture antibody: 83951-1-PBS. Detection antibody: 83951-3-PBS. Standard: Ag10177. Range: 0.313-40 ng/mL.