

For Research Use Only

# ATG4D Recombinant antibody, PBS Only (Capture)

Catalog Number: 83951-5-PBS



## Basic Information

<b>Catalog Number:</b> 83951-5-PBS	<b>GenBank Accession Number:</b> BC068992	<b>Purification Method:</b> Protein A purification
<b>Size:</b> 100ug , Concentration: 1 mg/ml by Nanodrop;	<b>GeneID (NCBI):</b> 84971	<b>CloneNo.:</b> 241035A4
<b>Source:</b> Rabbit	<b>UNIPROT ID:</b> Q86TLO	
<b>Isotype:</b> IgG	<b>Full Name:</b> ATG4 autophagy related 4 homolog D (S. cerevisiae)	
<b>Immunogen Catalog Number:</b> AG10177	<b>Calculated MW:</b> 474 aa, 53 kDa	

## Applications

**Tested Applications:**  
Sandwich ELISA, Indirect ELISA, Sample test

**Species Specificity:**  
human

## Product Information

83951-5-PBS targets ATG4D as part of a matched antibody pair:

MP00902-4: 83951-5-PBS capture and 83951-3-PBS detection (validated in Sandwich ELISA)

Unconjugated rabbit recombinant monoclonal antibody in PBS only (BSA and azide free) storage buffer at a concentration of 1 mg/mL, ready for conjugation. Created using Proteintech's proprietary in-house recombinant technology. Recombinant production enables unrivalled batch-to-batch consistency, easy scale-up, and future security of supply.

This conjugation ready format makes antibodies ideal for use in many applications including: ELISAs, multiplex assays requiring matched pairs, mass cytometry, and multiplex imaging applications. Antibody use should be optimized by the end user for each application and assay.

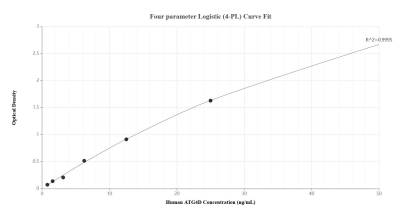
## Storage

**Storage:**  
Store at -80°C.  
**Storage Buffer:**  
PBS Only

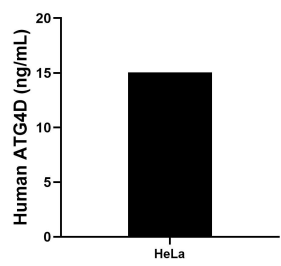
For technical support and original validation data for this product please contact:  
T: 1 (888) 4PTGLAB (1-888-478-4522) (toll free in USA), or 1(312) 455-8498 (outside USA)  
E: [proteintech@ptglab.com](mailto:proteintech@ptglab.com)  
W: [ptglab.com](http://ptglab.com)

This product is exclusively available under Proteintech Group brand and is not available to purchase from any other manufacturer.

## Selected Validation Data



Sandwich ELISA standard curve of MP00902-4, Human ATG4D Recombinant Matched Antibody Pair - PBS only. 83951-5-PBS was coated to a plate as the capture antibody and incubated with serial dilutions of standard Ag10177. 83951-3-PBS was HRP conjugated as the detection antibody. Range: 0.781-50 ng/mL.



The mean ATG4D concentration was determined to be 15.05 ng/mL in HeLa cell extract based on a 1.30 mg/mL extract load.