

For Research Use Only

ATP6V1B1 Recombinant antibody

Catalog Number: 83953-5-RR



Basic Information

Catalog Number: 83953-5-RR	GenBank Accession Number: BC063411	Purification Method: Protein A purification
Size: 100ul , Concentration: 1000 µg/ml by Nanodrop;	GeneID (NCBI): 525	CloneNo.: 240955B9
Source: Rabbit	UNIPROT ID: P15313	Recommended Dilutions: WB 1:5000-1:50000 IHC 1:300-1:1200
Isotype: IgG	Full Name: ATPase, H ⁺ transporting, lysosomal 56/58kDa, V1 subunit B1	
Immunogen Catalog Number: AG6332	Calculated MW: 57 kDa	
	Observed MW: 56 kDa	

Applications

Tested Applications: WB, IHC, ELISA	Positive Controls:
Species Specificity: human, mouse, rat	WB : mouse brain tissue, rat brain tissue, mouse kidney tissue, rat kidney tissue
Note-IHC: suggested antigen retrieval with TE buffer pH 9.0; (*) Alternatively, antigen retrieval may be performed with citrate buffer pH 6.0	IHC : rat kidney tissue, mouse kidney tissue

Background Information

ATP6V1B1, also named ATP6B1, VATB and VPP3, belongs to the ATPase alpha/beta chains family. ATP6V1B1 is mainly expressed in kidney. ATP6V1B1 is essential for the proper assembly and activity of V-ATPase. In renal intercalated cells, ATP6V1B1 mediates secretion of protons (H⁺) into the urine thereby ensuring correct urinary acidification. The calculated molecular weight of ATP6V1B1 is 57 kDa.

Storage

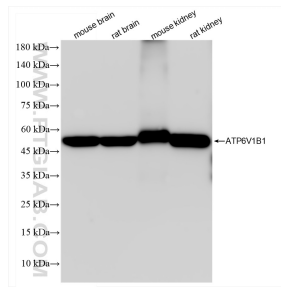
Storage:
Store at -20°C. Stable for one year after shipment.
Storage Buffer:
PBS with 0.02% sodium azide and 50% glycerol pH 7.3.
Aliquoting is unnecessary for -20°C storage

*** 20ul sizes contain 0.1% BSA

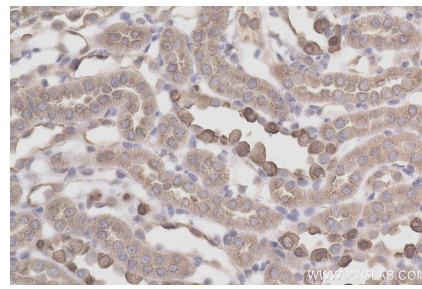
For technical support and original validation data for this product please contact:
T: 1 (888) 4PTGLAB (1-888-478-4522) (toll free in USA), or 1(312) 455-8498 (outside USA)
E: proteintech@ptglab.com
W: ptglab.com

This product is exclusively available under Proteintech Group brand and is not available to purchase from any other manufacturer.

Selected Validation Data



Various lysates were subjected to SDS PAGE followed by western blot with 83953-5-RR (ATP6V1B1 antibody) at dilution of 1:10000 incubated at room temperature for 1.5 hours.



Immunohistochemical analysis of paraffin-embedded rat kidney tissue slide using 83953-5-RR (ATP6V1B1 antibody) at dilution of 1:600 (under 40x lens). Heat mediated antigen retrieval with Tris-EDTA buffer (pH 9.0).