

For Research Use Only

PEA15 Recombinant antibody, PBS Only (Capture)

Catalog Number: 83958-2-PBS

Featured Product



Basic Information

Catalog Number: 83958-2-PBS	GenBank Accession Number: BC002426	Purification Method: Protein A purification
Size: 100ug, Concentration: 1 mg/ml by Nanodrop;	GeneID (NCBI): 8682	CloneNo.: 241044G8
Source: Rabbit	UNIPROT ID: Q15121	
Isotype: IgG	Full Name: phosphoprotein enriched in astrocytes 15	
Immunogen Catalog Number: AG13782	Calculated MW: 130 aa, 15 kDa	
	Observed MW: 13-15 kDa	

Applications

Tested Applications:
WB, Cytometric bead array, Indirect ELISA

Species Specificity:
human, mouse, rat

Product Information

83958-2-PBS targets PEA15 as part of a matched antibody pair:

MP00916-1: 83958-2-PBS capture and 83958-1-PBS detection (validated in Cytometric bead array)

Unconjugated rabbit recombinant monoclonal antibody in PBS only (BSA and azide free) storage buffer at a concentration of 1 mg/mL, ready for conjugation. Created using Proteintech's proprietary in-house recombinant technology. Recombinant production enables unrivalled batch-to-batch consistency, easy scale-up, and future security of supply.

This conjugation ready format makes antibodies ideal for use in many applications including: ELISAs, multiplex assays requiring matched pairs, mass cytometry, and multiplex imaging applications. Antibody use should be optimized by the end user for each application and assay.

Background Information

Phosphoprotein Enriched in Astrocytes 15 kDa (PEA15), also known as PED-15, is a small, death effector-domain (DED)-containing protein that was recently demonstrated to inhibit tumor necrosis factor- α -induced apoptosis and to reverse the inhibition of integrin activation due to H-Ras. PEA15 is a 15 kDa protein that is highly expressed in the nervous system with particularly high levels in astrocytes and neurons of the hippocampus. PEA15 is a cytoplasmic protein that sits at an important junction in intracellular signalling and can regulate diverse cellular processes, such as proliferation and apoptosis, dependent upon stimulation.

Storage

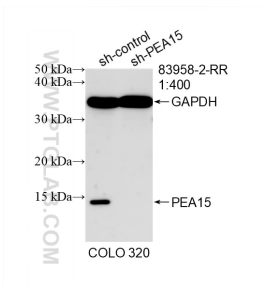
Storage:
Store at -80°C.

Storage Buffer:
PBS Only

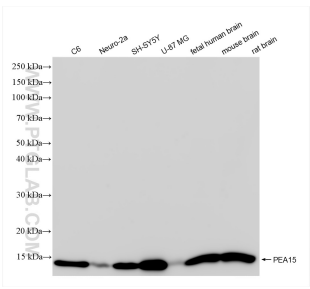
For technical support and original validation data for this product please contact:
T: 1 (888) 4PTGLAB (1-888-478-4522) (toll free in USA), or 1(312) 455-8498 (outside USA)
E: proteintech@ptglab.com
W: ptglab.com

This product is exclusively available under Proteintech Group brand and is not available to purchase from any other manufacturer.

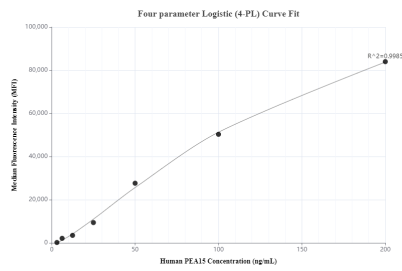
Selected Validation Data



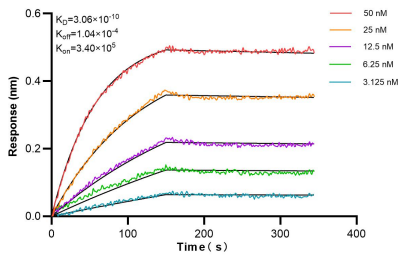
WB result of PEA15 antibody (83958-2-RR; 1:400; incubated at room temperature for 1.5 hours) with sh-Control and sh-PEA15 transfected COLO 320 cells. This data was developed using the same antibody clone with 83958-2-PBS in a different storage buffer formulation.



Various lysates were subjected to SDS PAGE followed by western blot with 83958-2-RR (PEA15 antibody) at dilution of 1:3000 incubated at room temperature for 1.5 hours. This data was developed using the same antibody clone with 83958-2-PBS in a different storage buffer formulation.



Cytometric bead array standard curve of MP00916-1, PEA15 Recombinant Matched Antibody Pair, PBS Only. Capture antibody: 83958-2-PBS. Detection antibody: 83958-1-PBS. Standard: Ag13782. Range: 3.125-200 ng/mL



Biolayer interferometry (BLI) kinetic assays of 83958-2-RR against Human PEA15 were performed. The affinity constant is 0.306 nM.