

For Research Use Only

# PEA15 Recombinant antibody

Catalog Number: 83958-2-RR

Featured Product



## Basic Information

### Catalog Number:

83958-2-RR

### Size:

100ul, Concentration: 1000 µg/ml by Nanodrop;

### Source:

Rabbit

### Isotype:

IgG

### Immunogen Catalog Number:

AG13782

### GenBank Accession Number:

BC002426

### GeneID (NCBI):

8682

### UNIPROT ID:

Q15121

### Full Name:

phosphoprotein enriched in astrocytes 15

### Calculated MW:

130 aa, 15 kDa

### Observed MW:

13-15 kDa

### Purification Method:

Protein A purification

### CloneNo.:

241044G8

### Recommended Dilutions:

WB 1:1000-1:6000

## Applications

### Tested Applications:

WB, ELISA

### Species Specificity:

human, mouse, rat

### Positive Controls:

WB : C6 cells, COLO 320 cells, Neuro-2a cells, SH-SY5Y cells, U-87 MG cells, fetal human brain tissue, mouse brain tissue, rat brain tissue

## Background Information

Phosphoprotein Enriched in Astrocytes 15 kDa (PEA15), also known as PED-15, is a small, death effector-domain (DED)-containing protein that was recently demonstrated to inhibit tumor necrosis factor- $\alpha$ -induced apoptosis and to reverse the inhibition of integrin activation due to H-Ras. PEA15 is a 15 kDa protein that is highly expressed in the nervous system with particularly high levels in astrocytes and neurons of the hippocampus. PEA15 is a cytoplasmic protein that sits at an important junction in intracellular signalling and can regulate diverse cellular processes, such as proliferation and apoptosis, dependent upon stimulation.

## Storage

### Storage:

Store at -20°C. Stable for one year after shipment.

### Storage Buffer:

PBS with 0.02% sodium azide and 50% glycerol pH 7.3.

Aliquoting is unnecessary for -20°C storage

\*\*\* 20ul sizes contain 0.1% BSA

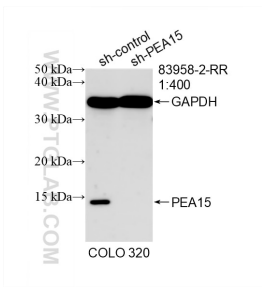
For technical support and original validation data for this product please contact:

T: 1 (888) 4PTGLAB (1-888-478-4522) (toll free in USA), or 1(312) 455-8498 (outside USA)

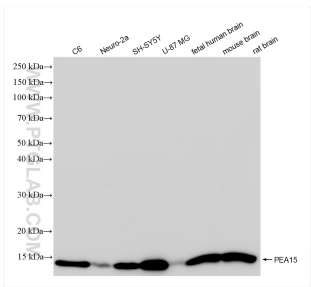
E: [proteintech@ptglab.com](mailto:proteintech@ptglab.com)  
W: [ptglab.com](http://ptglab.com)

This product is exclusively available under Proteintech Group brand and is not available to purchase from any other manufacturer.

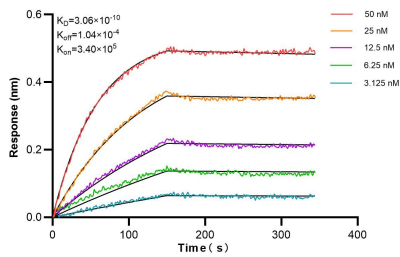
Selected Validation Data



WB result of PEA15 antibody (83958-2-RR; 1:400; incubated at room temperature for 1.5 hours) with sh-Control and sh-PEA15 transfected COLO 320 cells.



Various lysates were subjected to SDS PAGE followed by western blot with 83958-2-RR (PEA15 antibody) at dilution of 1:3000 incubated at room temperature for 1.5 hours.



Biolayer interferometry (BLI) kinetic assays of 83958-2-RR against Human PEA15 were performed. The affinity constant is 0.306 nM.