

For Research Use Only

# PEA15 Recombinant antibody

Catalog Number: 83958-3-RR



## Basic Information

<b>Catalog Number:</b> 83958-3-RR	<b>GenBank Accession Number:</b> BC002426	<b>Purification Method:</b> Protein A purification
<b>Size:</b> 100ul , Concentration: 1000 µg/ml by Nanodrop;	<b>GeneID (NCBI):</b> 8682	<b>CloneNo.:</b> 241044H6
<b>Source:</b> Rabbit	<b>UNIPROT ID:</b> Q15121	<b>Recommended Dilutions:</b> IF/ICC 1:125-1:500
<b>Isotype:</b> IgG	<b>Full Name:</b> phosphoprotein enriched in astrocytes 15	
<b>Immunogen Catalog Number:</b> AG13782	<b>Calculated MW:</b> 130 aa, 15 kDa	
	<b>Observed MW:</b> 15 kDa	

## Applications

<b>Tested Applications:</b> IF/ICC, ELISA	<b>Positive Controls:</b> IF/ICC : A431 cells,
<b>Species Specificity:</b> human	

## Background Information

Phosphoprotein Enriched in Astrocytes 15 kDa (PEA15), also known as PED-15, is a small, death effector-domain (DED)-containing protein that was recently demonstrated to inhibit tumor necrosis factor- $\alpha$ -induced apoptosis and to reverse the inhibition of integrin activation due to H-Ras. PEA15 is a 15 kDa protein that is highly expressed in the nervous system with particularly high levels in astrocytes and neurons of the hippocampus. PEA15 is a cytoplasmic protein that sits at an important junction in intracellular signalling and can regulate diverse cellular processes, such as proliferation and apoptosis, dependent upon stimulation.

## Storage

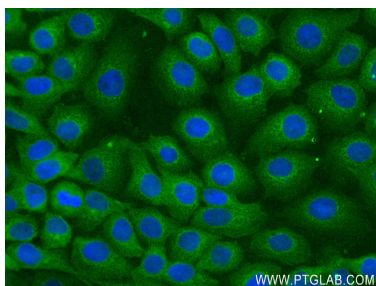
**Storage:**  
Store at -20°C. Stable for one year after shipment.  
**Storage Buffer:**  
PBS with 0.02% sodium azide and 50% glycerol pH 7.3.  
Aliquoting is unnecessary for -20°C storage

\*\*\* 20ul sizes contain 0.1% BSA

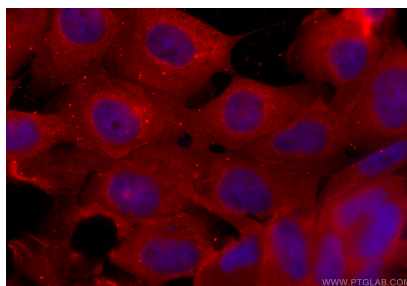
For technical support and original validation data for this product please contact:  
T: 1 (888) 4PTGLAB (1-888-478-4522) (toll free in USA), or 1(312) 455-8498 (outside USA)  
E: [proteintech@ptglab.com](mailto:proteintech@ptglab.com)  
W: [ptglab.com](http://ptglab.com)

This product is exclusively available under Proteintech Group brand and is not available to purchase from any other manufacturer.

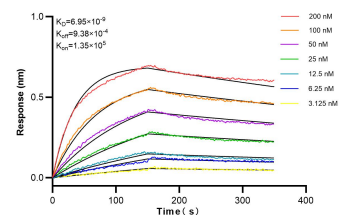
## Selected Validation Data



Immunofluorescent analysis of (4% PFA) fixed A431 cells using PEA15 antibody (83958-3-RR, Clone: 241044H6) at dilution of 1:250 and CoraLite®488-Conjugated AffiniPure Goat Anti-Rabbit IgG(H+L) (SA00013-2).



Immunofluorescent analysis of (4% PFA) fixed A431 cells using PEA15 antibody (83958-3-RR, Clone: 241044H6) at dilution of 1:500 and CoraLite®594-Conjugated Goat Anti-Rabbit IgG(H+L) (SA00013-4).



Biolayer interferometry (BLI) kinetic assays of 83958-3-RR against Human PEA15 were performed. The affinity constant is 6.95 nM.