

For Research Use Only

SLPI Recombinant antibody

Catalog Number: 83965-4-RR



Basic Information

Catalog Number: 83965-4-RR	GenBank Accession Number: BC020708	Purification Method: Protein A purification
Size: 100ul , Concentration: 1000 µg/ml by Nanodrop;	GeneID (NCBI): 6590	CloneNo.: 241057F8
Source: Rabbit	UNIPROT ID: P03973	Recommended Dilutions: WB 1:5000-1:50000
Isotype: IgG	Full Name: secretory leukocyte peptidase inhibitor	
Immunogen Catalog Number: AG1673	Calculated MW: 14 kDa	
	Observed MW: 14 kDa	

Applications

Tested Applications: WB, ELISA	Positive Controls: WB : human saliva,
Species Specificity: human	

Background Information

SLPI, a member of Whey acidic protein family, could mediate a variety of biological processes including cell proliferation and apoptosis, repairing reaction and immune response, with crucial roles in anti-protease, anti-inflammatory, anti-bacterial and anti-virus. SLPI is mainly expressed in epithelial cells.

Storage

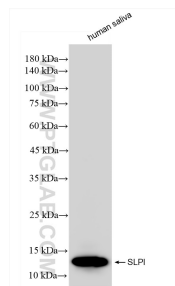
Storage:
Store at -20°C. Stable for one year after shipment.
Storage Buffer:
PBS with 0.02% sodium azide and 50% glycerol pH 7.3.
Aliquoting is unnecessary for -20°C storage

*** 20ul sizes contain 0.1% BSA

For technical support and original validation data for this product please contact:
T: 1 (888) 4PTGLAB (1-888-478-4522) (toll free in USA), or 1(312) 455-8498 (outside USA)
E: proteintech@ptglab.com
W: ptglab.com

This product is exclusively available under Proteintech Group brand and is not available to purchase from any other manufacturer.

Selected Validation Data



human saliva were subjected to SDS PAGE followed by western blot with 83965-4-RR (SLPI antibody) at dilution of 1:10000 incubated at room temperature for 1.5 hours.