

For Research Use Only

# YTHDC2 Recombinant antibody, PBS Only (Detector)

Catalog Number: 83970-1-PBS



## Basic Information

<b>Catalog Number:</b> 83970-1-PBS	<b>GenBank Accession Number:</b> BC137285	<b>Purification Method:</b> Protein A purification
<b>Size:</b> 100ug , Concentration: 1 mg/ml by Nanodrop;	<b>GeneID (NCBI):</b> 64848	<b>CloneNo.:</b> 241123A9
<b>Source:</b> Rabbit	<b>UNIPROT ID:</b> Q9H6S0	
<b>Isotype:</b> IgG	<b>Full Name:</b> YTH domain containing 2	
<b>Immunogen Catalog Number:</b> AG26690	<b>Observed MW:</b> 160 kDa	

## Applications

**Tested Applications:**  
WB, IHC, FC (Intra), Cytometric bead array, Sandwich ELISA, Indirect ELISA, Sample test

**Species Specificity:**  
human, mouse

## Product Information

83970-1-PBS targets YTHDC2 as part of a matched antibody pair:

MP00893-1: 83970-4-PBS capture and 83970-1-PBS detection (validated in Cytometric bead array)

MP00893-3: 83970-3-PBS capture and 83970-1-PBS detection (validated in Sandwich ELISA)

Unconjugated rabbit recombinant monoclonal antibody in PBS only (BSA and azide free) storage buffer at a concentration of 1 mg/mL, ready for conjugation. Created using Proteintech's proprietary in-house recombinant technology. Recombinant production enables unrivalled batch-to-batch consistency, easy scale-up, and future security of supply.

This conjugation ready format makes antibodies ideal for use in many applications including: ELISAs, multiplex assays requiring matched pairs, mass cytometry, and multiplex imaging applications. Antibody use should be optimized by the end user for each application and assay.

## Background Information

YTHDC2, also named as Probable ATP-dependent RNA helicase YTHDC2, is a 1430 amino acid protein, which belongs to the DEAD box helicase family. YTHDC2 specifically recognizes and binds N6-methyladenosine (m6A)-containing RNAs. M6A is a modification present at internal sites of mRNAs and some non-coding RNAs and plays a role in the efficiency of mRNA splicing, processing and stability.

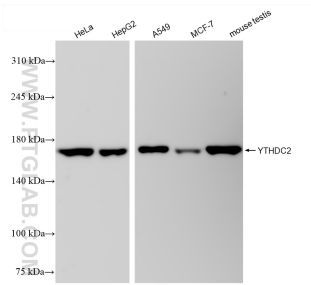
## Storage

**Storage:**  
Store at -80°C.  
**Storage Buffer:**  
PBS Only

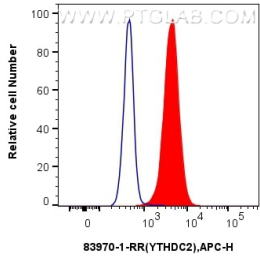
For technical support and original validation data for this product please contact:  
T: 1 (888) 4PTGLAB (1-888-478-4522) (toll free in USA), or 1(312) 455-8498 (outside USA)  
E: [proteintech@ptglab.com](mailto:proteintech@ptglab.com)  
W: [ptglab.com](http://ptglab.com)

This product is exclusively available under Proteintech Group brand and is not available to purchase from any other manufacturer.

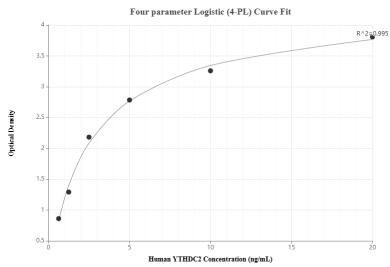
Selected Validation Data



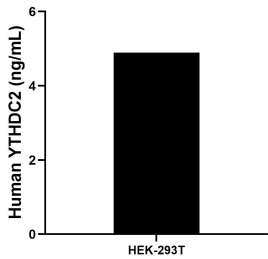
Various lysates were subjected to SDS PAGE followed by western blot with 83970-1-RR (YTHDC2 antibody) at dilution of 1:10000 incubated at room temperature for 1.5 hours. This data was developed using the same antibody clone with 83970-1-PBS in a different storage buffer formulation.



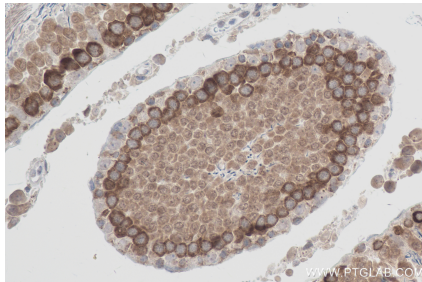
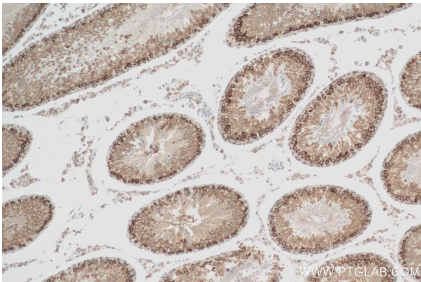
1x10<sup>6</sup> HepG2 cells were intracellularly stained with 0.25 ug YTHDC2 Recombinant antibody (83970-1-RR, Clone:241123A9) and APC-Conjugated AffiniPure Goat Anti-Rabbit IgG(H+L) (red), or 0.25 ug Isotype Control (blue). Cells were fixed with 4% PFA and permeabilized with Flow Cytometry Perm Buffer (PF00011-C). This data was developed using the same antibody clone with 83970-1-PBS in a different storage buffer formulation.



Sandwich ELISA standard curve of MP00893-3, Human YTHDC2 Recombinant Matched Antibody Pair - PBS only. 83970-3-PBS was coated to a plate as the capture antibody and incubated with serial dilutions of standard Ag26690. 83970-1-PBS was HRP conjugated as the detection antibody. Range: 0.625-20 ng/mL

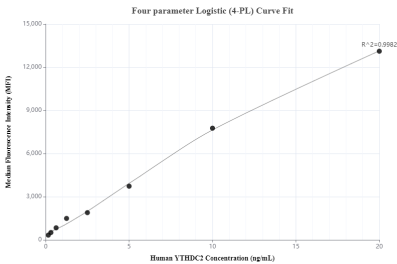


The mean YTHDC2 concentration was determined to be 4.89 ng/mL in HEK-293T cell extract based on a 1.4 mg/mL extract load.

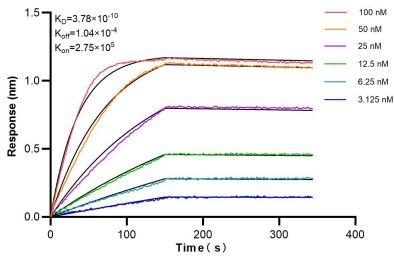


Immunohistochemical analysis of paraffin-embedded rat testis tissue slide using 83970-1-RR (YTHDC2 antibody) at dilution of 1:200 (under 10x lens). Heat mediated antigen retrieval with Tris-EDTA buffer (pH 9.0). This data was developed using the same antibody clone with 83970-1-PBS in a different storage buffer formulation.

Immunohistochemical analysis of paraffin-embedded rat testis tissue slide using 83970-1-RR (YTHDC2 antibody) at dilution of 1:200 (under 40x lens). Heat mediated antigen retrieval with Tris-EDTA buffer (pH 9.0). This data was developed using the same antibody clone with 83970-1-PBS in a different storage buffer formulation.



Cytometric bead array standard curve of MP00893-1, YTHDC2 Recombinant Matched Antibody Pair, PBS Only. Capture antibody: 83970-4-PBS. Detection antibody: 83970-1-PBS. Standard: Ag26690. Range: 0.156-20 ng/mL



Biolayer interferometry (BLI) kinetic assays of 83970-1-RR against Human YTHDC2 were performed. The affinity constant is 0.378 nM.