

For Research Use Only

# YTHDC2 Recombinant antibody

Catalog Number: 83970-1-RR



## Basic Information

<b>Catalog Number:</b> 83970-1-RR	<b>GenBank Accession Number:</b> BC137285	<b>Purification Method:</b> Protein A purification
<b>Size:</b> 100ul , Concentration: 1000 µg/ml by Nanodrop;	<b>GeneID (NCBI):</b> 64848	<b>CloneNo.:</b> 241123A9
<b>Source:</b> Rabbit	<b>UNIPROT ID:</b> Q9H6S0	<b>Recommended Dilutions:</b> WB 1:5000-1:50000 IHC 1:50-1:500
<b>Isotype:</b> IgG	<b>Full Name:</b> YTH domain containing 2	
<b>Immunogen Catalog Number:</b> AG26690	<b>Observed MW:</b> 160 kDa	

## Applications

<b>Tested Applications:</b> WB, IHC, FC (Intra), ELISA	<b>Positive Controls:</b>
<b>Species Specificity:</b> human, mouse	<b>WB :</b> HeLa cells, HepG2 cells, A549 cells, MCF-7 cells, mouse testis tissue
<b>Note-IHC:</b> suggested antigen retrieval with <b>TE buffer pH 9.0; (*) Alternatively, antigen retrieval may be performed with citrate buffer pH 6.0</b>	<b>IHC :</b> rat testis tissue,

## Background Information

YTHDC2, also named as Probable ATP-dependent RNA helicase YTHDC2, is a 1430 amino acid protein, which belongs to the DEAD box helicase family. YTHDC2 specifically recognizes and binds N6-methyladenosine (m6A)-containing RNAs. M6A is a modification present at internal sites of mRNAs and some non-coding RNAs and plays a role in the efficiency of mRNA splicing, processing and stability.

## Storage

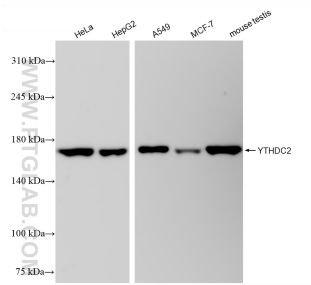
**Storage:**  
Store at -20°C. Stable for one year after shipment.  
**Storage Buffer:**  
PBS with 0.02% sodium azide and 50% glycerol pH 7.3.  
Aliquoting is unnecessary for -20°C storage

\*\*\* 20ul sizes contain 0.1% BSA

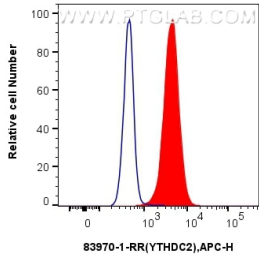
For technical support and original validation data for this product please contact:  
T: 1 (888) 4PTGLAB (1-888-478-4522) (toll free in USA), or 1(312) 455-8498 (outside USA)  
E: [proteintech@ptglab.com](mailto:proteintech@ptglab.com)  
W: [ptglab.com](http://ptglab.com)

This product is exclusively available under Proteintech Group brand and is not available to purchase from any other manufacturer.

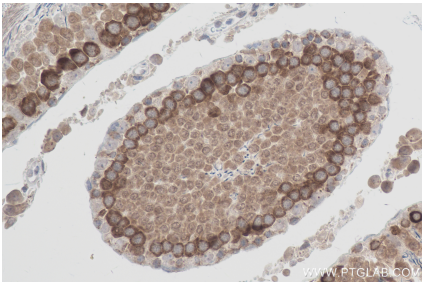
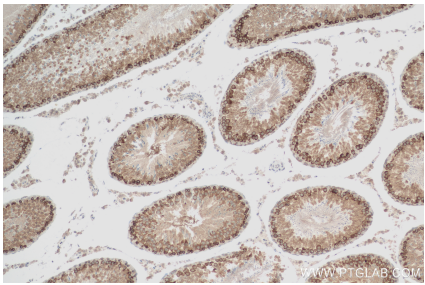
Selected Validation Data



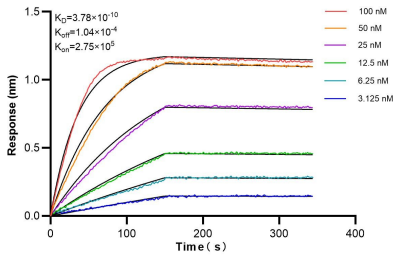
Various lysates were subjected to SDS PAGE followed by western blot with 83970-1-RR (YTHDC2 antibody) at dilution of 1:10000 incubated at room temperature for 1.5 hours.



1x10<sup>6</sup> HepG2 cells were intracellularly stained with 0.25 ug YTHDC2 Recombinant antibody (83970-1-RR, Clone:241123A9) and APC-Conjugated AffiniPure Goat Anti-Rabbit IgG(H+L) (red), or 0.25 ug Isotype Control (blue). Cells were fixed with 4% PFA and permeabilized with Flow Cytometry Perm Buffer (PF00011-C).



Immunohistochemical analysis of paraffin-embedded rat testis tissue slide using 83970-1-RR (YTHDC2 antibody) at dilution of 1:200 (under 40x lens). Heat mediated antigen retrieval with Tris-EDTA buffer (pH 9.0).



Biolayer interferometry (BLI) kinetic assays of 83970-1-RR against Human YTHDC2 were performed. The affinity constant is 0.378 nM.