

For Research Use Only

YTHDC2 Recombinant antibody, PBS Only (Capture/Detector)

Catalog Number: 83970-3-PBS



Basic Information

Catalog Number: 83970-3-PBS	GenBank Accession Number: BC137285	Purification Method: Protein A purification
Size: 100ug , Concentration: 1 mg/ml by Nanodrop;	GeneID (NCBI): 64848	CloneNo.: 241123G1
Source: Rabbit	UNIPROT ID: Q9H6S0	
Isotype: IgG	Full Name: YTH domain containing 2	
Immunogen Catalog Number: AG26690		

Applications

Tested Applications:
Cytometric bead array, Sandwich ELISA, Indirect ELISA, Sample test

Species Specificity:
human

Product Information

83970-3-PBS targets YTHDC2 as part of a matched antibody pair:

MP00893-2: 83970-2-PBS capture and 83970-3-PBS detection (validated in Cytometric bead array)

MP00893-3: 83970-3-PBS capture and 83970-1-PBS detection (validated in Sandwich ELISA)

Unconjugated rabbit recombinant monoclonal antibody in PBS only (BSA and azide free) storage buffer at a concentration of 1 mg/mL, ready for conjugation. Created using Proteintech's proprietary in-house recombinant technology. Recombinant production enables unrivalled batch-to-batch consistency, easy scale-up, and future security of supply.

This conjugation ready format makes antibodies ideal for use in many applications including: ELISAs, multiplex assays requiring matched pairs, mass cytometry, and multiplex imaging applications. Antibody use should be optimized by the end user for each application and assay.

Storage

Storage:
Store at -80°C.

Storage Buffer:
PBS Only

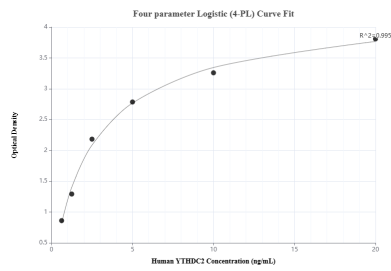
For technical support and original validation data for this product please contact:

T: 1 (888) 4PTGLAB (1-888-478-4522) (toll free in USA), or 1(312) 455-8498 (outside USA)

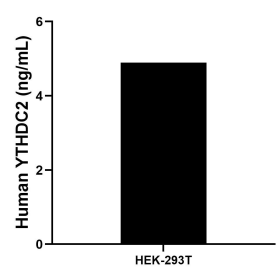
E: proteintech@ptglab.com
W: ptglab.com

This product is exclusively available under Proteintech Group brand and is not available to purchase from any other manufacturer.

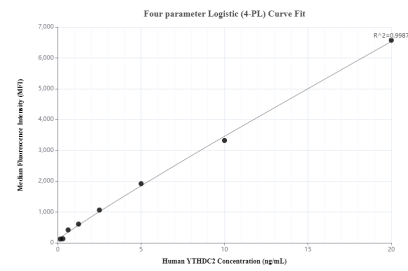
Selected Validation Data



Sandwich ELISA standard curve of MP00893-3, Human YTHDC2 Recombinant Matched Antibody Pair - PBS only. 83970-3-PBS was coated to a plate as the capture antibody and incubated with serial dilutions of standard Ag26690. 83970-1-PBS was HRP conjugated as the detection antibody. Range: 0.625-20 ng/mL



The mean YTHDC2 concentration was determined to be 4.89 ng/mL in HEK-293T cell extract based on a 1.4 mg/mL extract load.



Cytometric bead array standard curve of MP00893-2, YTHDC2 Recombinant Matched Antibody Pair, PBS Only. Capture antibody: 83970-2-PBS. Detection antibody: 83970-3-PBS. Standard: Ag26690. Range: 0.156-20 ng/mL