

For Research Use Only

P2RY13 Recombinant monoclonal antibody, PBS Only

Catalog Number: 83975-3-PBS



Basic Information

Catalog Number: 83975-3-PBS	GenBank Accession Number: BC041116	Purification Method: Protein A purification
Size: 100ug, Concentration: 1 mg/ml by Nanodrop;	GeneID (NCBI): 53829	CloneNo.: 253290B11
Source: Rabbit	UNIPROT ID: Q9BPV8	
Isotype: IgG	Full Name: purinergic receptor P2Y, G-protein coupled, 13	
	Calculated MW: 354 aa, 41 kDa	
	Observed MW: 41 kDa	

Applications

Tested Applications:
WB, Indirect ELISA

Species Specificity:
human, mouse, rat

Background Information

P2RY13 (also named GPR86 or GPR94) is a G protein-coupled receptor (GPCR), which is involved in the pathogenesis of inflammation and immune disorders (PMID: 35982893). Several studies have reported that P2RY13 is a key regulator of cholesterol transport and hepatic HDL endocytosis and is involved in bone formation, remodeling, cell survival, and neuroprotection (PMID: 38045624).

Storage

Storage:
Store at -80°C.

Storage Buffer:
PBS only, pH7.3

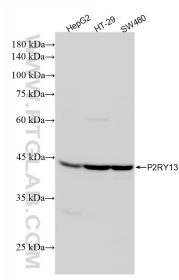
For technical support and original validation data for this product please contact:

T: 1 (888) 4PTGLAB (1-888-478-4522) (toll free in USA), or 1(312) 455-8498 (outside USA)

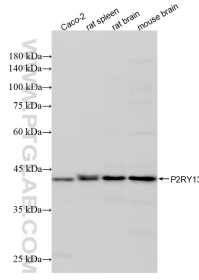
E: proteintech@ptglab.com
W: ptglab.com

This product is exclusively available under Proteintech Group brand and is not available to purchase from any other manufacturer.

Selected Validation Data



Various lysates were subjected to SDS PAGE followed by western blot with 83975-3-RR (P2RY13 antibody) at dilution of 1:2000 incubated at room temperature for 1.5 hours. This data was developed using the same antibody clone with 83975-3-PBS in a different storage buffer formulation.



Various lysates were subjected to SDS PAGE followed by western blot with 83975-3-RR (P2RY13 antibody) at dilution of 1:2000 incubated at room temperature for 1.5 hours. This data was developed using the same antibody clone with 83975-3-PBS in a different storage buffer formulation.