

For Research Use Only

# P2RY13 Recombinant monoclonal antibody

Catalog Number: 83975-3-RR



## Basic Information

**Catalog Number:**

83975-3-RR

**Size:**

100ul , Concentration: 1000 µg/ml by Nanodrop;

**Source:**

Rabbit

**Isotype:**

IgG

**GenBank Accession Number:**

BC041116

**GeneID (NCBI):**

53829

**UNIPROT ID:**

Q9BPV8

**Full Name:**

purinergic receptor P2Y, G-protein coupled, 13

**Calculated MW:**

354 aa, 41 kDa

**Observed MW:**

41 kDa

**Purification Method:**

Protein A purification

**CloneNo.:**

253290B11

**Recommended Dilutions:**

WB: 1:1000-1:4000

## Applications

**Tested Applications:**

WB, ELISA

**Species Specificity:**

human, mouse, rat

**Positive Controls:**

WB : HepG2 cells, Caco-2 cells, rat spleen tissue, rat brain tissue, mouse brain tissue, HT-29 cells, SW480 cells

## Background Information

P2RY13 (also named GPR86 or GPR94) is a G protein-coupled receptor (GPCR), which is involved in the pathogenesis of inflammation and immune disorders (PMID: 35982893). Several studies have reported that P2RY13 is a key regulator of cholesterol transport and hepatic HDL endocytosis and is involved in bone formation, remodeling, cell survival, and neuroprotection (PMID: 38045624).

## Storage

**Storage:**

Store at -20°C. Stable for one year after shipment.

**Storage Buffer:**

PBS with 0.02% sodium azide and 50% glycerol, pH7.3

Aliquoting is unnecessary for -20°C storage

\*\*\* 20ul sizes contain 0.1% BSA

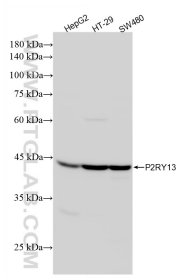
For technical support and original validation data for this product please contact:

T: 1 (888) 4PTGLAB (1-888-478-4522) (toll free in USA), or 1(312) 455-8498 (outside USA)

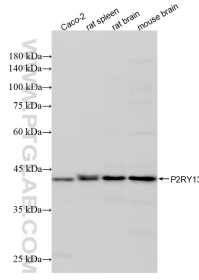
E: [proteintech@ptglab.com](mailto:proteintech@ptglab.com)  
W: [ptglab.com](http://ptglab.com)

This product is exclusively available under Proteintech Group brand and is not available to purchase from any other manufacturer.

## Selected Validation Data



Various lysates were subjected to SDS PAGE followed by western blot with 83975-3-RR (P2RY13 antibody) at dilution of 1:2000 incubated at room temperature for 1.5 hours.



Various lysates were subjected to SDS PAGE followed by western blot with 83975-3-RR (P2RY13 antibody) at dilution of 1:2000 incubated at room temperature for 1.5 hours.