

For Research Use Only

# Mouse Serpin E1/PAI-1 Recombinant antibody, PBS Only (Capture/Detector)

Catalog Number: 83980-2-PBS



## Basic Information

### Catalog Number:

83980-2-PBS

### Size:

100ug, Concentration: 1 mg/ml by Nanodrop;

### Source:

Rabbit

### Isotype:

IgG

### GenBank Accession Number:

#### GeneID (NCBI):

18787

#### UNIPROT ID:

P22777

#### Full Name:

serine (or cysteine) peptidase inhibitor, clade E, member 1

#### Calculated MW:

45kDa

### Purification Method:

Protein A purification

### CloneNo.:

241130G3

## Applications

### Tested Applications:

Cytometric bead array, Sandwich ELISA, Indirect ELISA, Sample test

### Species Specificity:

mouse

## Product Information

83980-2-PBS targets Serpin E1/PAI-1 as part of a matched antibody pair:

MP00875-1: 83980-3-PBS capture and 83980-2-PBS detection (validated in Cytometric bead array)

MP00875-3: 83980-1-PBS capture and 83980-2-PBS detection (validated in Cytometric bead array)

MP00875-4: 83980-2-PBS capture and 83980-3-PBS detection (validated in Sandwich ELISA)

Unconjugated rabbit recombinant monoclonal antibody in PBS only (BSA and azide free) storage buffer at a concentration of 1 mg/mL, ready for conjugation. Created using Proteintech's proprietary in-house recombinant technology. Recombinant production enables unrivalled batch-to-batch consistency, easy scale-up, and future security of supply.

This conjugation ready format makes antibodies ideal for use in many applications including: ELISAs, multiplex assays requiring matched pairs, mass cytometry, and multiplex imaging applications. Antibody use should be optimized by the end user for each application and assay.

## Storage

### Storage:

Store at -80°C.

### Storage Buffer:

PBS Only

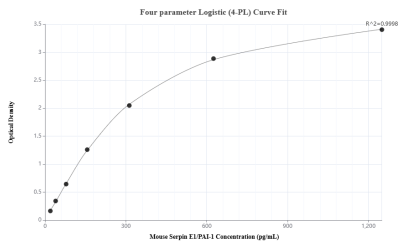
For technical support and original validation data for this product please contact:

T: 1 (888) 4PTGLAB (1-888-478-4522) (toll free in USA), or 1(312) 455-8498 (outside USA)

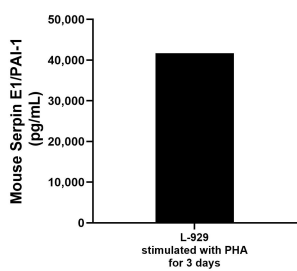
E: [proteintech@ptglab.com](mailto:proteintech@ptglab.com)  
W: [ptglab.com](http://ptglab.com)

This product is exclusively available under Proteintech Group brand and is not available to purchase from any other manufacturer.

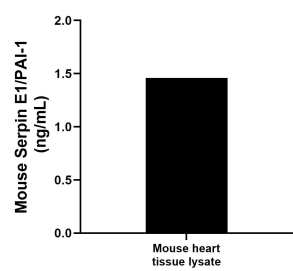
Selected Validation Data



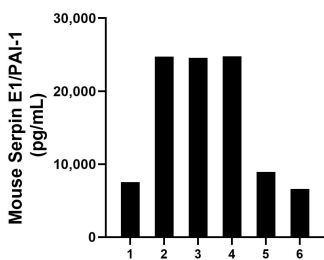
Sandwich ELISA standard curve of MP00875-4, Mouse Serpin E1/PAI-1 Recombinant Matched Antibody Pair - PBS only. 83980-2-PBS was coated to a plate as the capture antibody and incubated with serial dilutions of standard Eg1100. 83980-3-PBS was HRP conjugated as the detection antibody. Range: 19.5-1250 pg/mL



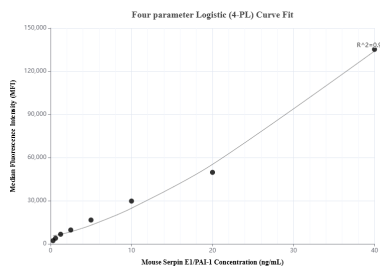
L-929 mouse fibroblast cells ( $1 \times 10^6$  cells/mL) were cultured for 3 days in MEM supplemented with 10% equine serum and stimulated with 10  $\mu$ g/mL PHA. The cell culture supernatants was assayed for mouse Serpin E1/PAI-1 and measured 41,666.9 pg/mL



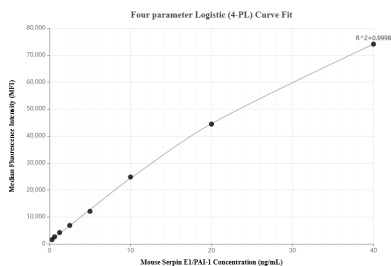
Mouse heart tissue lyaste was measured. The mouse Serpin E1/PAI-1 concentration of detected samples was determined to be 1.46 ng/mL (based on a 4.6 mg/mL extract load).



Serum of six mice was measured. The mouse Serpin E1/PAI-1 concentration of detected samples was determined to be 16,187.9 pg/mL with a range of 6,614.7 - 24,758.6 pg/mL



Cytometric bead array standard curve of MP00875-1, MOUSE Serpin E1/PAI-1 Recombinant Matched Antibody Pair, PBS Only. Capture antibody: 83980-3-PBS. Detection antibody: 83980-2-PBS. Standard: Eg1100. Range: 0.313-40 ng/mL



Cytometric bead array standard curve of MP00875-3, MOUSE Serpin E1/PAI-1 Recombinant Matched Antibody Pair, PBS Only. Capture antibody: 83980-1-PBS. Detection antibody: 83980-2-PBS. Standard: Eg1100. Range: 0.313-40 ng/mL