

For Research Use Only

TPRG1L Recombinant antibody, PBS Only (Detector)

Catalog Number: 83989-3-PBS



Basic Information

Catalog Number: 83989-3-PBS	GenBank Accession Number: BC019034	Purification Method: Protein A purification
Size: 100ug , Concentration: 1 mg/ml by Nanodrop;	GeneID (NCBI): 127262	CloneNo.: 24107088
Source: Rabbit	UNIPROT ID: Q5T0D9	
Isotype: IgG	Full Name: tumor protein p63 regulated 1-like	
Immunogen Catalog Number: AG22585	Observed MW: 30 kDa	

Applications

Tested Applications:
WB, IHC, Cytometric bead array, Indirect ELISA

Species Specificity:
human, mouse, rat

Product Information

83989-3-PBS targets TPRG1L as part of a matched antibody pair:

MP00883-1: 83989-1-PBS capture and 83989-3-PBS detection (validated in Cytometric bead array)

MP00883-3: 83989-2-PBS capture and 83989-3-PBS detection (validated in Cytometric bead array)

Unconjugated rabbit recombinant monoclonal antibody in PBS only (BSA and azide free) storage buffer at a concentration of 1 mg/mL, ready for conjugation. Created using Proteintech's proprietary in-house recombinant technology. Recombinant production enables unrivalled batch-to-batch consistency, easy scale-up, and future security of supply.

This conjugation ready format makes antibodies ideal for use in many applications including: ELISAs, multiplex assays requiring matched pairs, mass cytometry, and multiplex imaging applications. Antibody use should be optimized by the end user for each application and assay.

Background Information

Presynaptic protein involved in the synaptic transmission tuning. Regulates synaptic release probability by decreasing the calcium sensitivity of release.

Storage

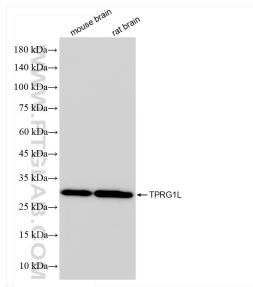
Storage:
Store at -80°C.

Storage Buffer:
PBS only, pH7.3

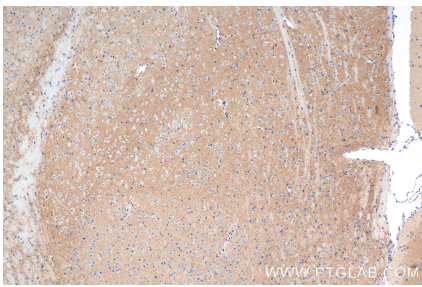
For technical support and original validation data for this product please contact:
T: 1 (888) 4PTGLAB (1-888-478-4522) (toll free in USA), or 1(312) 455-8498 (outside USA)
E: proteintech@ptglab.com
W: ptglab.com

This product is exclusively available under Proteintech Group brand and is not available to purchase from any other manufacturer.

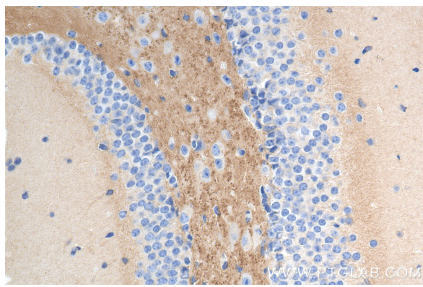
Selected Validation Data



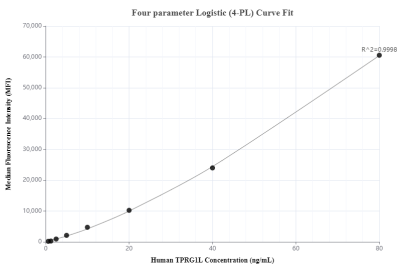
Various lysates were subjected to SDS PAGE followed by western blot with 83989-3-RR (TPRG1L antibody) at dilution of 1:4000 incubated at room temperature for 1.5 hours. This data was developed using the same antibody clone with 83989-3-PBS in a different storage buffer formulation.



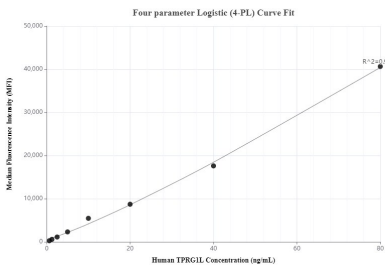
Immunohistochemical analysis of paraffin-embedded mouse brain tissue slide using 83989-3-RR (TPRG1L antibody) at dilution of 1:200 (under 10x lens). Heat mediated antigen retrieval with Tris-EDTA buffer (pH 9.0). This data was developed using the same antibody clone with 83989-3-PBS in a different storage buffer formulation.



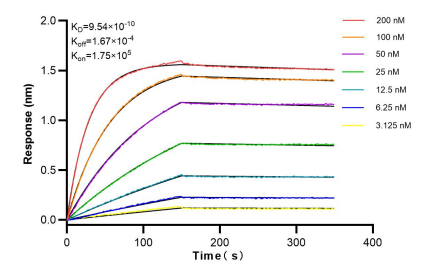
Immunohistochemical analysis of paraffin-embedded mouse brain tissue slide using 83989-3-RR (TPRG1L antibody) at dilution of 1:200 (under 40x lens). Heat mediated antigen retrieval with Tris-EDTA buffer (pH 9.0). This data was developed using the same antibody clone with 83989-3-PBS in a different storage buffer formulation.



Cytometric bead array standard curve of MP00883-1, TPRG1L Recombinant Matched Antibody Pair, PBS Only. Capture antibody: 83989-1-PBS. Detection antibody: 83989-3-PBS. Standard: Ag22585. Range: 0.625-80 ng/mL



Cytometric bead array standard curve of MP00883-3, TPRG1L Recombinant Matched Antibody Pair, PBS Only. Capture antibody: 83989-2-PBS. Detection antibody: 83989-3-PBS. Standard: Ag22585. Range: 0.625-80 ng/mL



Bi-layer interferometry (BLI) kinetic assays of 83989-3-RR against Human TPRG1L were performed. The affinity constant is 0.954 nM.