

For Research Use Only

MEF2B (isoform 365aa)-Specific Recombinant antibody

Catalog Number: 84000-1-RR



Basic Information

Catalog Number:

84000-1-RR

Size:

100ul, Concentration: 1000 ug/ml by Nanodrop;

Source:

Rabbit

Isotype:

IgG

GenBank Accession Number:

NM_005919

GeneID (NCBI):

4207

UNIPROT ID:

Q02080

Full Name:

LOC729991-MEF2B readthrough transcript

Calculated MW:

39 kDa

Observed MW:

38 kDa

Purification Method:

Protein A purification

CloneNo.:

240870A8

Recommended Dilutions:

WB 1:1000-1:6000

Applications

Tested Applications:

WB, ELISA

Species Specificity:

human, mouse, rat

Positive Controls:

WB : mouse skeletal muscle tissue, rat skeletal muscle tissue

Background Information

MEF2B is a member of the myocyte enhancer factor family of transcription factors. MEF family is thought to be involved in differentiation of certain neurogenic cells. MEF2B may be involved in muscle-specific and/or growth factor-related transcription.

This antibody detects the short isoform 365aa of MEF2B only.

Storage

Storage:

Store at -20°C. Stable for one year after shipment.

Storage Buffer:

PBS with 0.02% sodium azide and 50% glycerol pH 7.3.

Aliquoting is unnecessary for -20°C storage

*** 20ul sizes contain 0.1% BSA

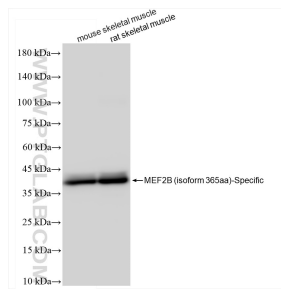
For technical support and original validation data for this product please contact:

T: 1 (888) 4PTGLAB (1-888-478-4522) (toll free in USA), or 1(312) 455-8498 (outside USA)

E: proteintech@ptglab.com
W: ptglab.com

This product is exclusively available under Proteintech Group brand and is not available to purchase from any other manufacturer.

Selected Validation Data



Various lysates were subjected to SDS PAGE followed by western blot with 84000-1-RR (MEF2B (isoform 365aa)-Specific antibody) at dilution of 1:3000 incubated at room temperature for 1.5 hours.