

For Research Use Only

PAR2 Recombinant antibody, PBS Only (Capture/Detector)

Catalog Number: 84006-1-PBS



Basic Information

Catalog Number: 84006-1-PBS	GenBank Accession Number: BC018130	Purification Method: Protein A purification
Size: 100ug, Concentration: 1 mg/ml by Nanodrop;	GeneID (NCBI): 2150	CloneNo.: 241116C2
Source: Rabbit	UNIPROT ID: P55085	
Isotype: IgG	Full Name: coagulation factor II (thrombin) receptor-like 1	
Immunogen Catalog Number: AG2801	Calculated MW: 397 aa, 44 kDa	

Applications

Tested Applications:
Cytometric bead array, Sandwich ELISA, Indirect ELISA, Sample test

Species Specificity:
human

Product Information

84006-1-PBS targets PAR2 as part of a matched antibody pair:

MP00939-1: 84006-1-PBS capture and 84006-3-PBS detection (validated in Cytometric bead array)

MP00939-2: 84006-1-PBS capture and 84006-4-PBS detection (validated in Cytometric bead array)

MP00939-3: 84006-2-PBS capture and 84006-1-PBS detection (validated in Cytometric bead array, Sandwich ELISA)

Unconjugated rabbit recombinant monoclonal antibody in PBS only (BSA and azide free) storage buffer at a concentration of 1 mg/mL, ready for conjugation. Created using Proteintech's proprietary in-house recombinant technology. Recombinant production enables unrivalled batch-to-batch consistency, easy scale-up, and future security of supply.

This conjugation ready format makes antibodies ideal for use in many applications including: ELISAs, multiplex assays requiring matched pairs, mass cytometry, and multiplex imaging applications. Antibody use should be optimized by the end user for each application and assay.

Storage

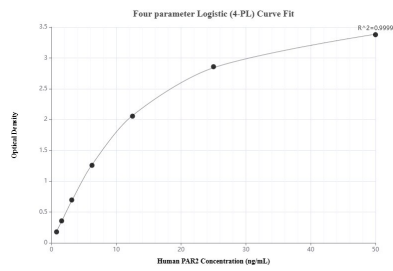
Storage:
Store at -80°C.

Storage Buffer:
PBS Only

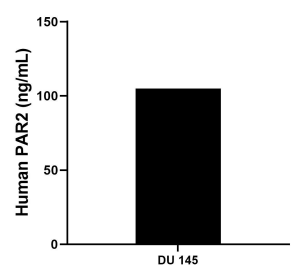
For technical support and original validation data for this product please contact:
T: 1 (888) 4PTGLAB (1-888-478-4522) (toll free in USA), or 1(312) 455-8498 (outside USA)
E: proteintech@ptglab.com
W: ptglab.com

This product is exclusively available under Proteintech Group brand and is not available to purchase from any other manufacturer.

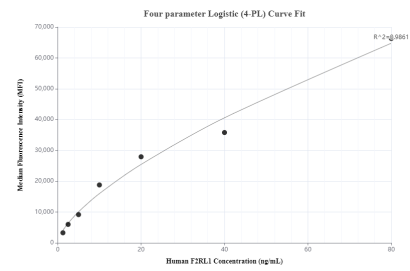
Selected Validation Data



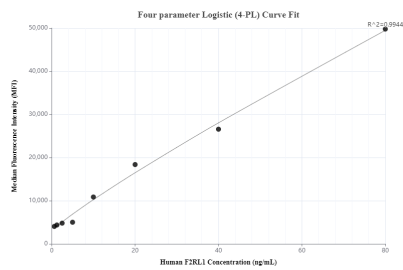
Sandwich ELISA standard curve of MP00939-3, Human PAR2 Recombinant Matched Antibody Pair - PBS only. 84006-2-PBS was coated to a plate as the capture antibody and incubated with serial dilutions of standard Ag2801. 84006-1-PBS was HRP conjugated as the detection antibody. Range: 0.781-50 ng/mL



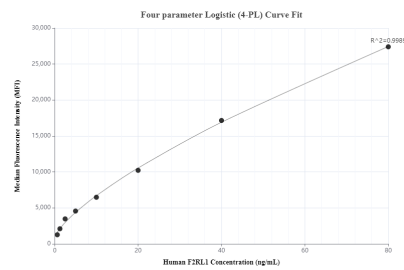
The mean PAR2 concentration was determined to be 104.90 ng/mL in DU 145 cell extract based on a 1.0 mg/mL extract load.



Cytometric bead array standard curve of MP00939-1, F2RL1/PAR2 Recombinant Matched Antibody Pair, PBS Only. Capture antibody: 84006-1-PBS. Detection antibody: 84006-3-PBS. Standard: Ag2801. Range: 1.25-80 ng/mL



Cytometric bead array standard curve of MP00939-2, F2RL1/PAR2 Recombinant Matched Antibody Pair, PBS Only. Capture antibody: 84006-1-PBS. Detection antibody: 84006-4-PBS. Standard: Ag2801. Range: 0.625-80 ng/mL



Cytometric bead array standard curve of MP00939-3, F2RL1/PAR2 Recombinant Matched Antibody Pair, PBS Only. Capture antibody: 84006-2-PBS. Detection antibody: 84006-1-PBS. Standard: Ag2801. Range: 0.625-80 ng/mL