

For Research Use Only

ABR Recombinant antibody, PBS Only (Capture/Detector)

Catalog Number: 84011-1-PBS



Basic Information

Catalog Number: 84011-1-PBS	GenBank Accession Number: NM_021962	Purification Method: Protein A purification
Size: 100ug, Concentration: 1 mg/ml by Nanodrop;	GeneID (NCBI): 29	CloneNo.: 241121B4
Source: Rabbit	UNIPROT ID: Q12979	
Isotype: IgG	Full Name: active BCR-related gene	
Immunogen Catalog Number: AG29522	Calculated MW: 98 kDa	

Applications

Tested Applications:
Cytometric bead array, Sandwich ELISA, Indirect ELISA, Sample test

Species Specificity:
human

Product Information

84011-1-PBS targets ABR as part of a matched antibody pair:

MP00961-1: 84011-1-PBS capture and 84011-3-PBS detection (validated in Cytometric bead array)

MP00961-3: 84011-1-PBS capture and 84011-2-PBS detection (validated in Cytometric bead array)

MP00961-4: 84011-4-PBS capture and 84011-1-PBS detection (validated in Sandwich ELISA)

Unconjugated rabbit recombinant monoclonal antibody in PBS only (BSA and azide free) storage buffer at a concentration of 1 mg/mL, ready for conjugation. Created using Proteintech's proprietary in-house recombinant technology. Recombinant production enables unrivalled batch-to-batch consistency, easy scale-up, and future security of supply.

This conjugation ready format makes antibodies ideal for use in many applications including: ELISAs, multiplex assays requiring matched pairs, mass cytometry, and multiplex imaging applications. Antibody use should be optimized by the end user for each application and assay.

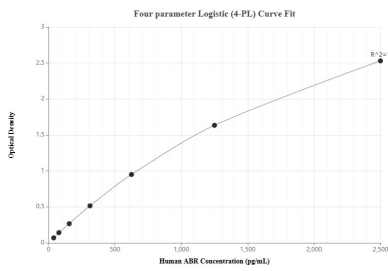
Storage

Storage:
Store at -80°C.
Storage Buffer:
PBS Only

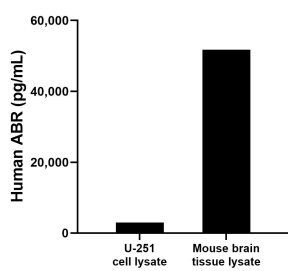
For technical support and original validation data for this product please contact:
T: 1 (888) 4PTGLAB (1-888-478-4522) (toll free in USA), or 1(312) 455-8498 (outside USA)
E: proteintech@ptglab.com
W: ptglab.com

This product is exclusively available under Proteintech Group brand and is not available to purchase from any other manufacturer.

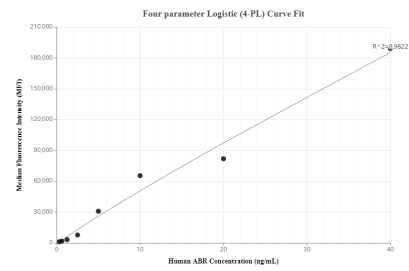
Selected Validation Data



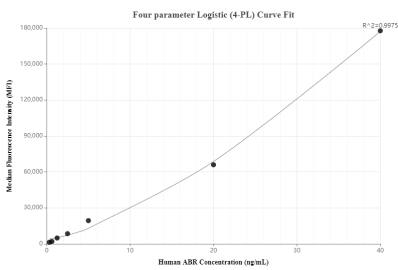
Sandwich ELISA standard curve of MP00961-4, Human ABR Recombinant Matched Antibody Pair - PBS only. 84011-4-PBS was coated to a plate as the capture antibody and incubated with serial dilutions of standard Ag29522. 84011-1-PBS was HRP conjugated as the detection antibody. Range: 3.91-2500 pg/mL



U-251 cell lysate and mouse brain tissue lysate were measured. The human ABR concentration of detected samples was determined to be 2,939.5 pg/mL (based on a 3.30 mg/mL extract load) in U-251 cell lysate and 51,727.8 pg/mL (based on a 4.60 mg/mL extract load) in mouse brain tissue lysate.



Cytometric bead array standard curve of MP00961-1, ABR Recombinant Matched Antibody Pair, PBS Only. Capture antibody: 84011-1-PBS. Detection antibody: 84011-3-PBS. Standard: Ag29522. Range: 0.313-40 ng/mL



Cytometric bead array standard curve of MP00961-3, ABR Recombinant Matched Antibody Pair, PBS Only. Capture antibody: 84011-1-PBS. Detection antibody: 84011-2-PBS. Standard: Ag29522. Range: 0.313-40 ng/mL