

For Research Use Only

# ABR Recombinant antibody, PBS Only

Catalog Number: 84011-6-PBS



## Basic Information

<b>Catalog Number:</b> 84011-6-PBS	<b>GenBank Accession Number:</b> NM_021962	<b>Purification Method:</b> Protein A purification
<b>Size:</b> 100ug , Concentration: 1 mg/ml by Nanodrop;	<b>GeneID (NCBI):</b> 29	<b>CloneNo.:</b> 241121G1
<b>Source:</b> Rabbit	<b>UNIPROT ID:</b> Q12979	
<b>Isotype:</b> IgG	<b>Full Name:</b> active BCR-related gene	
<b>Immunogen Catalog Number:</b> AG29522	<b>Calculated MW:</b> 98 kDa	
	<b>Observed MW:</b> 97-100 kDa	

## Applications

**Tested Applications:**  
WB, Indirect ELISA

**Species Specificity:**  
human, mouse, rat

## Background Information

ABR (Active breakpoint cluster region-related protein) is the only protein known in humans and mice to share high homology with BCR (68% amino acid identity). BCR(Breakpoint cluster region) gene was originally identified due to its involvement in a specific chromosomal translocation that causes the development of chronic myeloid leukemia and a subset of acute lymphoblastic leukemia. The C-terminus is a GTPase-activating protein domain which stimulates GTP hydrolysis by RAC1, RAC2 and CDC42. (PMID: 17116687, PMID: 37507586)

## Storage

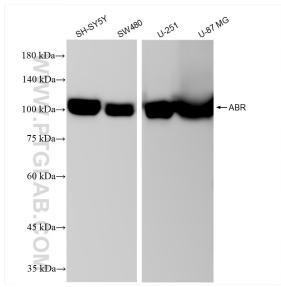
**Storage:**  
Store at -80°C.

**Storage Buffer:**  
PBS Only

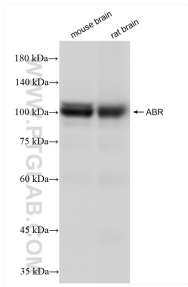
For technical support and original validation data for this product please contact:  
T: 1 (888) 4PTGLAB (1-888-478-4522) (toll free in USA), or 1(312) 455-8498 (outside USA)  
E: [proteintech@ptglab.com](mailto:proteintech@ptglab.com)  
W: [ptglab.com](http://ptglab.com)

This product is exclusively available under Proteintech Group brand and is not available to purchase from any other manufacturer.

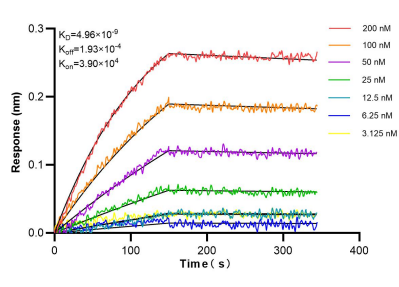
## Selected Validation Data



Various lysates were subjected to SDS PAGE followed by western blot with 84011-6-RR (ABR antibody) at dilution of 1:12000 incubated at room temperature for 1.5 hours. This data was developed using the same antibody clone with 84011-6-PBS in a different storage buffer formulation.



Various lysates were subjected to SDS PAGE followed by western blot with 84011-6-RR (ABR antibody) at dilution of 1:12000 incubated at room temperature for 1.5 hours. This data was developed using the same antibody clone with 84011-6-PBS in a different storage buffer formulation.



Biolayer interferometry (BLI) kinetic assays of 84011-6-RR against Human ABR were performed. The affinity constant is 4.96 nM.