

For Research Use Only

ABR Recombinant antibody

Catalog Number: 84011-6-RR



Basic Information

Catalog Number: 84011-6-RR	GenBank Accession Number: NM_021962	Purification Method: Protein A purification
Size: 100ul , Concentration: 1000 ug/ml by Nanodrop;	GeneID (NCBI): 29	CloneNo.: 241121G1
Source: Rabbit	UNIPROT ID: Q12979	Recommended Dilutions: WB 1:5000-1:50000
Isotype: IgG	Full Name: active BCR-related gene	
Immunogen Catalog Number: AG29522	Calculated MW: 98 kDa	
	Observed MW: 97-100 kDa	

Applications

Tested Applications: WB, ELISA	Positive Controls: WB : SH-SY5Y cells, mouse brain tissue, SW480 cells, U-251 cells, U-87 MG cells, rat brain tissue
Species Specificity: human, mouse, rat	

Background Information

ABR (Active breakpoint cluster region-related protein) is the only protein known in humans and mice to share high homology with BCR (68% amino acid identity). BCR(Breakpoint cluster region) gene was originally identified due to its involvement in a specific chromosomal translocation that causes the development of chronic myeloid leukemia and a subset of acute lymphoblastic leukemia. The C-terminus is a GTPase-activating protein domain which stimulates GTP hydrolysis by RAC1, RAC2 and CDC42. (PMID: 17116687, PMID: 37507586)

Storage

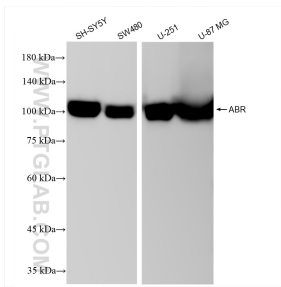
Storage:
Store at -20°C. Stable for one year after shipment.
Storage Buffer:
PBS with 0.02% sodium azide and 50% glycerol pH 7.3.
Aliquoting is unnecessary for -20°C storage

*** 20ul sizes contain 0.1% BSA

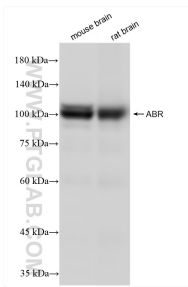
For technical support and original validation data for this product please contact:
T: 1 (888) 4PTGLAB (1-888-478-4522) (toll free in USA), or 1(312) 455-8498 (outside USA)
E: proteintech@ptglab.com
W: ptglab.com

This product is exclusively available under Proteintech Group brand and is not available to purchase from any other manufacturer.

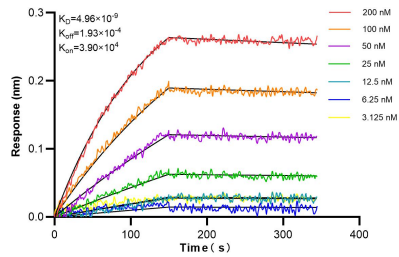
Selected Validation Data



Various lysates were subjected to SDS PAGE followed by western blot with 84011-6-RR (ABR antibody) at dilution of 1:12000 incubated at room temperature for 1.5 hours.



Various lysates were subjected to SDS PAGE followed by western blot with 84011-6-RR (ABR antibody) at dilution of 1:12000 incubated at room temperature for 1.5 hours.



Biolayer interferometry (BLI) kinetic assays of 84011-6-RR against Human ABR were performed. The affinity constant is 4.96 nM.