

For Research Use Only

SP100 Recombinant antibody, PBS Only

Catalog Number: 84012-5-PBS



Basic Information

Catalog Number:

84012-5-PBS

Size:

100ug , Concentration: 1 mg/ml by Nanodrop;

Source:

Rabbit

Isotype:

IgG

Immunogen Catalog Number:

AG35193

GenBank Accession Number:

BC011562

GeneID (NCBI):

6672

UNIPROT ID:

P23497

Full Name:

SP100 nuclear antigen

Calculated MW:

879 aa, 100 kDa

Observed MW:

70-100 kDa, 110-140 kDa

Purification Method:

Protein A purification

CloneNo.:

241153F8

Applications

Tested Applications:

WB, IHC, IF/ICC, Indirect ELISA

Species Specificity:

human

Background Information

SP100 nuclear antigen, belongs to the nuclear bodies(NBs), has a role in the control of gene expression. It contains a HSR domain, which is important for the nuclear body targeting as well as for the dimerization, and one PxVxL motif, which if required for interaction with chromoshadow domains. Sp100 is an acidic protein that exerts a highly aberrant electrophoretic mobility in SDS-polyacrylamide gel electrophoresis.

Storage

Storage:

Store at -80°C.

Storage Buffer:

PBS only, pH7.3

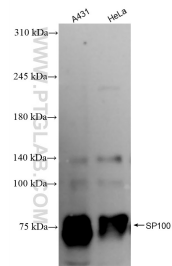
For technical support and original validation data for this product please contact:

T: 1 (888) 4PTGLAB (1-888-478-4522) (toll free in USA), or 1(312) 455-8498 (outside USA)

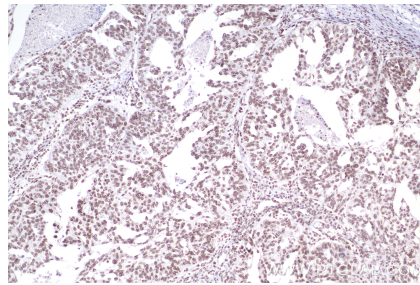
E: proteintech@ptglab.com
W: ptglab.com

This product is exclusively available under Proteintech Group brand and is not available to purchase from any other manufacturer.

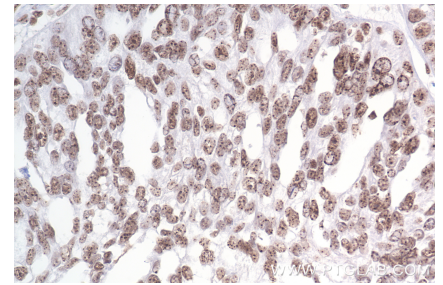
Selected Validation Data



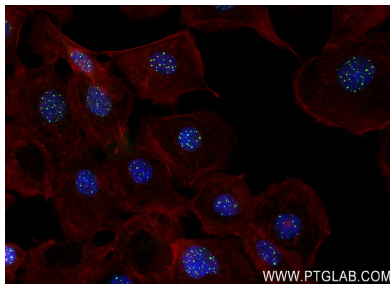
Various lysates were subjected to SDS PAGE followed by western blot with 84012-5-RR (SP100 antibody) at dilution of 1:5000 incubated at room temperature for 1.5 hours. This data was developed using the same antibody clone with 84012-5-PBS in a different storage buffer formulation.



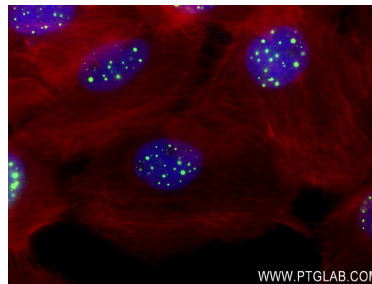
Immunohistochemical analysis of paraffin-embedded human ovary cancer tissue slide using 84012-5-RR (SP100 antibody) at dilution of 1:800 (under 10x lens). Heat mediated antigen retrieval with . This data was developed using the same antibody clone with 84012-5-PBS in a different storage buffer formulation.



Immunohistochemical analysis of paraffin-embedded human ovary cancer tissue slide using 84012-5-RR (SP100 antibody) at dilution of 1:800 (under 40x lens). Heat mediated antigen retrieval with . This data was developed using the same antibody clone with 84012-5-PBS in a different storage buffer formulation.



Immunofluorescent analysis of (4% PFA) fixed A431 cells using SP100 antibody (84012-5-RR, Clone: 241153F8) at dilution of 1:250 and CoraLite®488-Conjugated AffiniPure Goat Anti-Rabbit IgG(H+L) (SA00013-2), CL594-Phalloidin (red). This data was developed using the same antibody clone with 84012-5-PBS in a different storage buffer formulation.



Immunofluorescent analysis of (4% PFA) fixed A431 cells using SP100 antibody (84012-5-RR, Clone: 241153F8) at dilution of 1:250 and CoraLite®488-Conjugated AffiniPure Goat Anti-Rabbit IgG(H+L) (SA00013-2), CL594-Phalloidin (red). This data was developed using the same antibody clone with 84012-5-PBS in a different storage buffer formulation.