

For Research Use Only

SP100 Recombinant antibody

Catalog Number: 84012-5-RR



Basic Information

Catalog Number: 84012-5-RR	GenBank Accession Number: BC011562	Purification Method: Protein A purification
Size: 100ul , Concentration: 1000 µg/ml by Nanodrop;	GeneID (NCBI): 6672	CloneNo.: 241153F8
Source: Rabbit	UNIPROT ID: P23497	Recommended Dilutions: WB 1:2000-1:10000 IHC 1:400-1:1600 IF/ICC 1:125-1:500
Isotype: IgG	Full Name: SP100 nuclear antigen	
Immunogen Catalog Number: AG35193	Calculated MW: 879 aa, 100 kDa Observed MW: 70-100 kDa, 110-140 kDa	

Applications

Tested Applications: WB, IHC, IF/ICC, ELISA	Positive Controls:
Species Specificity: human	WB : A431 cells, HeLa cells
Note-IHC: suggested antigen retrieval with TE buffer pH 9.0; (*) Alternatively, antigen retrieval may be performed with citrate buffer pH 6.0	IHC : human ovary cancer tissue,
	IF/ICC : A431 cells,

Background Information

SP100 nuclear antigen, belongs to the nuclear bodies(NBs), has a role in the control of gene expression. It contains a HSR domain, which is important for the nuclear body targeting as well as for the dimerization, and one PxVxL motif, which is required for interaction with chromoshadow domains. Sp100 is an acidic protein that exerts a highly aberrant electrophoretic mobility in SDS-polyacrylamide gel electrophoresis.

Storage

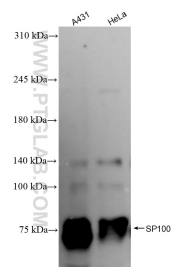
Storage:
Store at -20°C. Stable for one year after shipment.
Storage Buffer:
PBS with 0.02% sodium azide and 50% glycerol, pH7.3
Aliquoting is unnecessary for -20°C storage

*** 20ul sizes contain 0.1% BSA

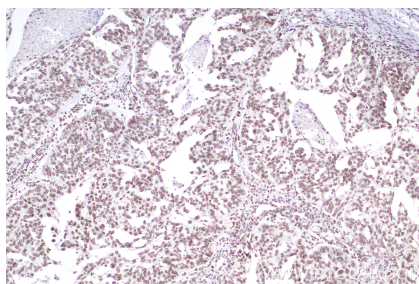
For technical support and original validation data for this product please contact:
T: 1 (888) 4PTGLAB (1-888-478-4522) (toll free in USA), or 1(312) 455-8498 (outside USA)
E: proteintech@ptglab.com
W: ptglab.com

This product is exclusively available under Proteintech Group brand and is not available to purchase from any other manufacturer.

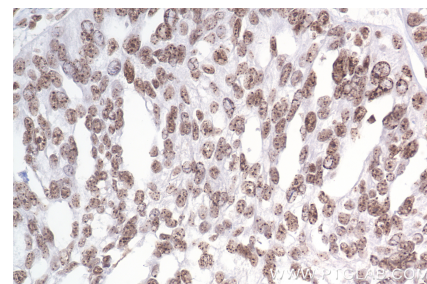
Selected Validation Data



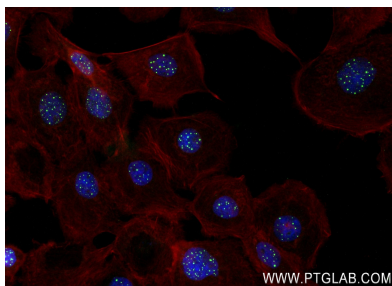
Various lysates were subjected to SDS PAGE followed by western blot with 84012-5-RR (SP100 antibody) at dilution of 1:5000 incubated at room temperature for 1.5 hours.



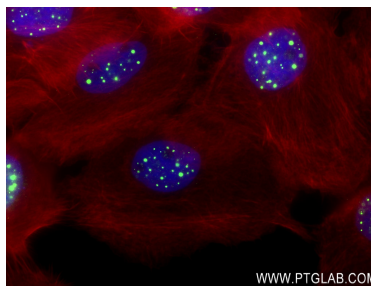
Immunohistochemical analysis of paraffin-embedded human ovary cancer tissue slide using 84012-5-RR (SP100 antibody) at dilution of 1:800 (under 10x lens). Heat mediated antigen retrieval with .



Immunohistochemical analysis of paraffin-embedded human ovary cancer tissue slide using 84012-5-RR (SP100 antibody) at dilution of 1:800 (under 40x lens). Heat mediated antigen retrieval with .



Immunofluorescent analysis of (4% PFA) fixed A431 cells using SP100 antibody (84012-5-RR, Clone: 241153F8) at dilution of 1:250 and CoraLite®488-Conjugated AffiniPure Goat Anti-Rabbit IgG(H+L) (SA00013-2), CL594-Phalloidin (red).



Immunofluorescent analysis of (4% PFA) fixed A431 cells using SP100 antibody (84012-5-RR, Clone: 241153F8) at dilution of 1:250 and CoraLite®488-Conjugated AffiniPure Goat Anti-Rabbit IgG(H+L) (SA00013-2), CL594-Phalloidin (red).