

For Research Use Only

KIF5A Recombinant antibody, PBS Only (Capture/Detector)

Catalog Number: 84013-3-PBS



Basic Information

Catalog Number: 84013-3-PBS	GenBank Accession Number: BC146670	Purification Method: Protein A purification
Size: 100ug , Concentration: 1 mg/ml by Nanodrop;	GeneID (NCBI): 3798	CloneNo.: 241124F12
Source: Rabbit	UNIPROT ID: Q12840	
Isotype: IgG	Full Name: kinesin family member 5A	
Immunogen Catalog Number: AG15518	Calculated MW: 1032 aa, 117 kDa	

Applications

Tested Applications:
Cytometric bead array, Sandwich ELISA, Indirect ELISA, Sample test

Species Specificity:
human

Product Information

84013-3-PBS targets KIF5A as part of a matched antibody pair:

MP00967-1: 84013-4-PBS capture and 84013-3-PBS detection (validated in Cytometric bead array)

MP00967-3: 84013-3-PBS capture and 84013-2-PBS detection (validated in Cytometric bead array)

MP00967-4: 84013-3-PBS capture and 84013-6-PBS detection (validated in Sandwich ELISA)

Unconjugated rabbit recombinant monoclonal antibody in PBS only (BSA and azide free) storage buffer at a concentration of 1 mg/mL, ready for conjugation. Created using Proteintech's proprietary in-house recombinant technology. Recombinant production enables unrivalled batch-to-batch consistency, easy scale-up, and future security of supply.

This conjugation ready format makes antibodies ideal for use in many applications including: ELISAs, multiplex assays requiring matched pairs, mass cytometry, and multiplex imaging applications. Antibody use should be optimized by the end user for each application and assay.

Storage

Storage:
Store at -80°C.

Storage Buffer:
PBS only, pH7.3

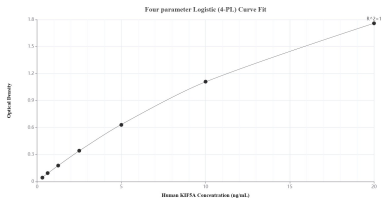
For technical support and original validation data for this product please contact:

T: 1 (888) 4PTGLAB (1-888-478-4522) (toll free in USA), or 1(312) 455-8498 (outside USA)

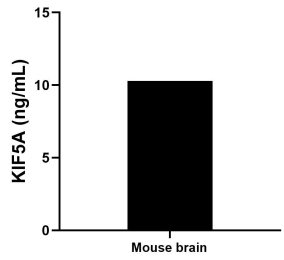
E: proteintech@ptglab.com
W: ptglab.com

This product is exclusively available under Proteintech Group brand and is not available to purchase from any other manufacturer.

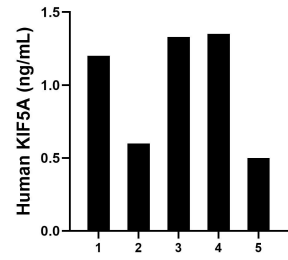
Selected Validation Data



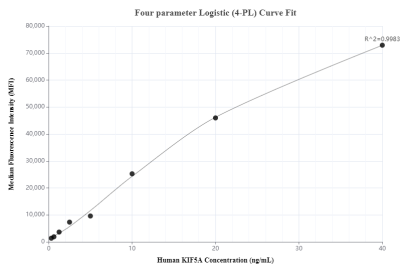
Sandwich ELISA standard curve of MP00967-4, Human KIF5A Recombinant Matched Antibody Pair - PBS only. 84013-3-PBS was coated to a plate as the capture antibody and incubated with serial dilutions of standard Ag15518. 84013-6-PBS was HRP conjugated as the detection antibody. Range: 0.313-20 ng/mL.



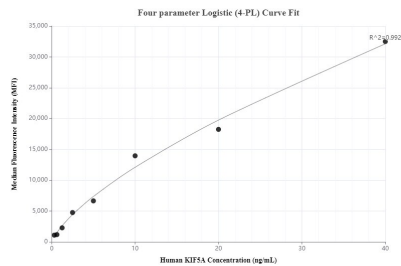
The mean KIF5A concentration was determined to be 10.30 ng/mL in mouse brain tissue extract based on a 4.60 mg/mL extract load.



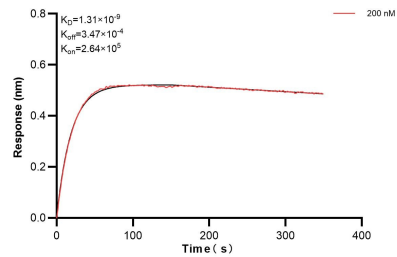
Serum of five individual healthy human donors was measured. The KIF5A concentration of detected samples was determined to be 1.00 ng/mL with a range of 0.50 - 1.35 ng/mL.



Cytometric bead array standard curve of MP00967-1, KIF5A Recombinant Matched Antibody Pair, PBS Only. Capture antibody: 84013-4-PBS. Detection antibody: 84013-3-PBS. Standard: Ag15518. Range: 0.313-40 ng/mL.



Cytometric bead array standard curve of MP00967-3, KIF5A Recombinant Matched Antibody Pair, PBS Only. Capture antibody: 84013-3-PBS. Detection antibody: 84013-2-PBS. Standard: Ag15518. Range: 0.313-40 ng/mL.



Biolayer interferometry (BLI) kinetic assay of 84013-3-PBS against Human KIF5A was performed. The affinity constant is 1.31 nM.