

For Research Use Only

KIF5A Recombinant antibody

Catalog Number: 84013-5-RR



Basic Information

Catalog Number: 84013-5-RR	GenBank Accession Number: BC146670	Purification Method: Protein A purification
Size: 100ul , Concentration: 400 ug/ml by Nanodrop;	GeneID (NCBI): 3798	CloneNo.: 241124H5
Source: Rabbit	UNIPROT ID: Q12840	Recommended Dilutions: WB 1:1000-1:8000 IHC 1:50-1:500
Isotype: IgG	Full Name: kinesin family member 5A	
Immunogen Catalog Number: AG15518	Calculated MW: 1032 aa, 117 kDa	
	Observed MW: 118-120 kDa	

Applications

Tested Applications: WB, IHC, FC (Intra), ELISA	Positive Controls:
Species Specificity: human	WB : SH-SY5Y cells, U-87-MG cells, mouse brain tissue, rat brain tissue
Note-IHC: suggested antigen retrieval with TE buffer pH 9.0; (*) Alternatively, antigen retrieval may be performed with citrate buffer pH 6.0	IHC : mouse brain tissue,

Background Information

Kinesin superfamily proteins (KIFs) are microtubule-based molecular motors essential for the intracellular transport of various cargos, including organelles, proteins, and RNAs. KIF 5A is expressed exclusively in neurons and transports neuronal cargoes into axons and dendrites. KIF5A mutations have been associated with Charcot-Marie-Tooth Type 2, an axonal peripheral neuropathy characterized by progressive loss of peripheral sensation and muscle wasting.

Storage

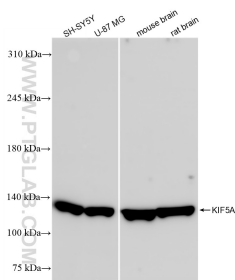
Storage:
Store at -20°C. Stable for one year after shipment.
Storage Buffer:
PBS with 0.02% sodium azide and 50% glycerol, pH7.3
Aliquoting is unnecessary for -20°C storage

*** 20ul sizes contain 0.1% BSA

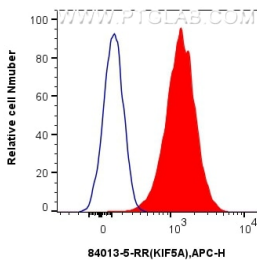
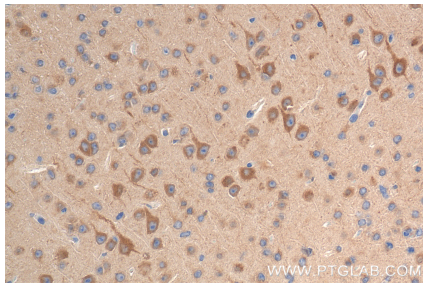
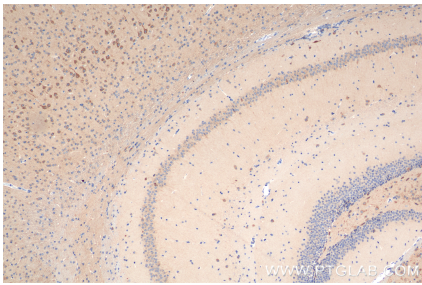
For technical support and original validation data for this product please contact:
T: 1 (888) 4PTGLAB (1-888-478-4522) (toll free in USA), or 1(312) 455-8498 (outside USA)
E: proteintech@ptglab.com
W: ptglab.com

This product is exclusively available under Proteintech Group brand and is not available to purchase from any other manufacturer.

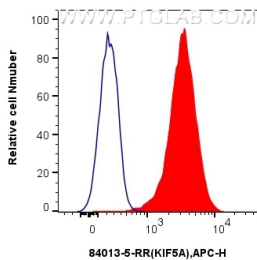
Selected Validation Data



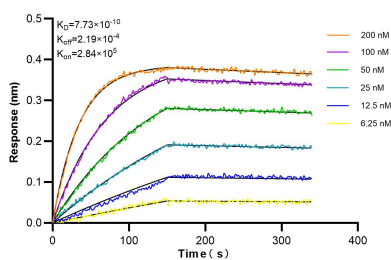
SH-SY5Y cells were subjected to SDS PAGE followed by western blot with 84013-5-RR (KIF5A antibody) at dilution of 1:4000 incubated at room temperature for 1.5 hours.



1x10⁶ SH-SY5Y cells were intracellularly stained with 0.25 ug KIF5A Recombinant antibody (84013-5-RR, Clone:241124H5) and APC-Conjugated Goat Anti-Rabbit IgG(H+L)(red), or 0.25 ug Isotype Control (blue). Cells were fixed with 4% PFA and permeabilized with Flow Cytometry Perm Buffer (PF00011-C).



1x10⁶ K562 were intracellularly stained with 0.25 ug KIF5A Recombinant antibody (84013-5-RR, Clone:241124H5) and APC-Conjugated Goat Anti-Rabbit IgG(H+L)(red), or 0.25 ug Isotype Control (blue). Cells were fixed with 4% PFA and permeabilized with Flow Cytometry Perm Buffer (PF00011-C).



Bi-layer interferometry (BLI) kinetic assays of 84013-5-RR against Human KIF5A were performed. The affinity constant is 0.773 nM.