

For Research Use Only

SRP54 Recombinant antibody, PBS Only (Capture/Detector)

Catalog Number: 84014-2-PBS



Basic Information

Catalog Number: 84014-2-PBS	GenBank Accession Number: BC003389	Purification Method: Protein A purification
Size: 100ug , Concentration: 1 mg/ml by Nanodrop;	GeneID (NCBI): 6729	CloneNo.: 241125C4
Source: Rabbit	UNIPROT ID: P61011	
Isotype: IgG	Full Name: signal recognition particle 54kDa	
Immunogen Catalog Number: AG2327	Calculated MW: 54 kDa	

Applications

Tested Applications:
Cytometric bead array, Sandwich ELISA, Indirect ELISA, Sample test

Species Specificity:
human

Product Information

84014-2-PBS targets SRP54 as part of a matched antibody pair:

MP00955-1: 84014-4-PBS capture and 84014-2-PBS detection (validated in Cytometric bead array)

MP00955-2: 84014-2-PBS capture and 84014-3-PBS detection (validated in Cytometric bead array)

MP00955-4: 84014-2-PBS capture and 84014-5-PBS detection (validated in Sandwich ELISA)

Unconjugated rabbit recombinant monoclonal antibody in PBS only (BSA and azide free) storage buffer at a concentration of 1 mg/mL, ready for conjugation. Created using Proteintech's proprietary in-house recombinant technology. Recombinant production enables unrivalled batch-to-batch consistency, easy scale-up, and future security of supply.

This conjugation ready format makes antibodies ideal for use in many applications including: ELISAs, multiplex assays requiring matched pairs, mass cytometry, and multiplex imaging applications. Antibody use should be optimized by the end user for each application and assay.

Storage

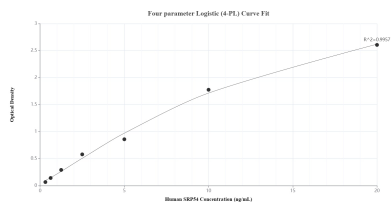
Storage:
Store at -80°C.

Storage Buffer:
PBS Only

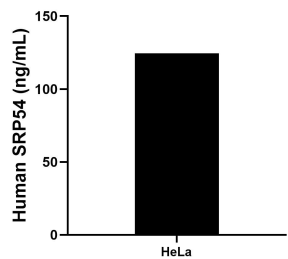
For technical support and original validation data for this product please contact:
T: 1 (888) 4PTGLAB (1-888-478-4522) (toll free in USA), or 1(312) 455-8498 (outside USA)
E: proteintech@ptglab.com
W: ptglab.com

This product is exclusively available under Proteintech Group brand and is not available to purchase from any other manufacturer.

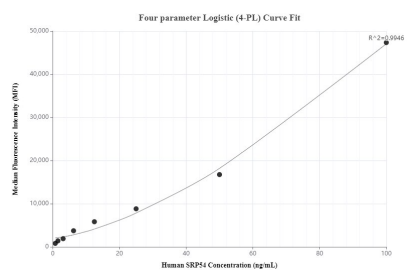
Selected Validation Data



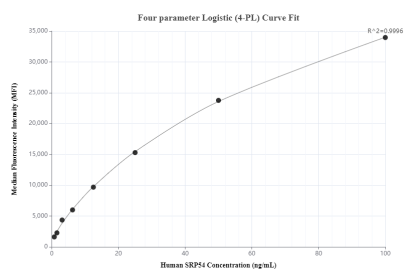
Sandwich ELISA standard curve of MP00955-4, Human SRP54 Recombinant Matched Antibody Pair - PBS only. 84014-2-PBS was coated to a plate as the capture antibody and incubated with serial dilutions of standard Ag2327. 84014-5-PBS was HRP conjugated as the detection antibody. Range: 0.313-20 ng/mL



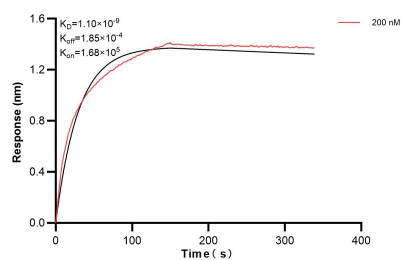
The mean SRP54 concentration was determined to be 124.39 ng/mL in HeLa cell extract based on a 1.20 mg/mL extract load.



Cytometric bead array standard curve of MP00955-1, SRP54 Recombinant Matched Antibody Pair, PBS Only. Capture antibody: 84014-4-PBS. Detection antibody: 84014-2-PBS. Standard: Ag2327. Range: 0.78-100 ng/mL



Cytometric bead array standard curve of MP00955-2, SRP54 Recombinant Matched Antibody Pair, PBS Only. Capture antibody: 84014-2-PBS. Detection antibody: 84014-3-PBS. Standard: Ag2327. Range: 0.78-100 ng/mL



Biolayer interferometry (BLI) kinetic assay of 84014-2-PBS against Human SRP54 was performed. The affinity constant is 1.10 nM.