

For Research Use Only

SUMO3 Recombinant antibody, PBS Only (Detector)

Catalog Number: 84017-1-PBS



Basic Information

Catalog Number: 84017-1-PBS	GenBank Accession Number: BC008420	Purification Method: Protein A purification
Size: 100ug , Concentration: 1 mg/ml by Nanodrop;	GeneID (NCBI): 6612	CloneNo.: 241156A9
Source: Rabbit	UNIPROT ID: P55854	
Isotype: IgG	Full Name: SMT3 suppressor of mif two 3 homolog 3 (S. cerevisiae)	
Immunogen Catalog Number: AG1135	Calculated MW: 12 kDa	

Applications

Tested Applications:
Cytometric bead array, Sandwich ELISA, Indirect ELISA, Sample test

Species Specificity:
human

Product Information

84017-1-PBS targets SUMO3 as part of a matched antibody pair:

MP00968-1: 84017-2-PBS capture and 84017-1-PBS detection (validated in Cytometric bead array)

MP00968-3: 84017-6-PBS capture and 84017-1-PBS detection (validated in Sandwich ELISA)

Unconjugated rabbit recombinant monoclonal antibody in PBS only (BSA and azide free) storage buffer at a concentration of 1 mg/mL, ready for conjugation. Created using Proteintech's proprietary in-house recombinant technology. Recombinant production enables unrivalled batch-to-batch consistency, easy scale-up, and future security of supply.

This conjugation ready format makes antibodies ideal for use in many applications including: ELISAs, multiplex assays requiring matched pairs, mass cytometry, and multiplex imaging applications. Antibody use should be optimized by the end user for each application and assay.

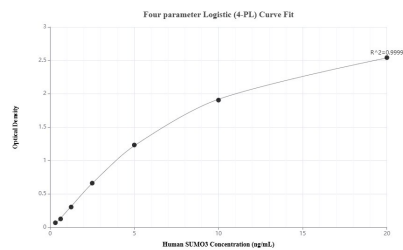
Storage

Storage:
Store at -80°C.
Storage Buffer:
PBS Only

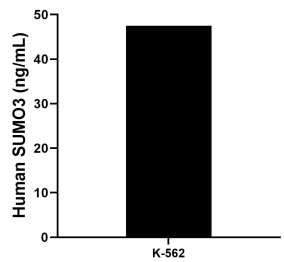
For technical support and original validation data for this product please contact:
T: 1 (888) 4PTGLAB (1-888-478-4522) (toll free in USA), or 1(312) 455-8498 (outside USA)
E: proteintech@ptglab.com
W: ptglab.com

This product is exclusively available under Proteintech Group brand and is not available to purchase from any other manufacturer.

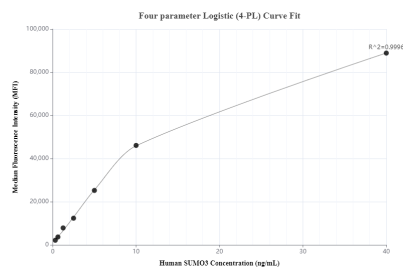
Selected Validation Data



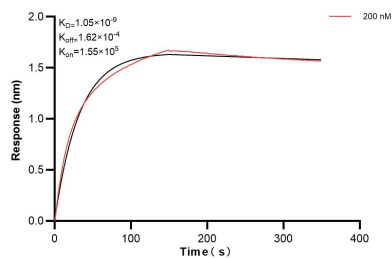
Sandwich ELISA standard curve of MP00968-3, Human SUMO3 Recombinant Matched Antibody Pair - PBS only. 84017-6-PBS was coated to a plate as the capture antibody and incubated with serial dilutions of standard Ag1135. 84017-1-PBS was HRP conjugated as the detection antibody. Range: 0.313-20 ng/mL



The mean SUMO3 concentration was determined to be 47.49 ng/mL in K-562 cell extract based on a 2.4 mg/mL extract load.



Cytometric bead array standard curve of MP00968-1, SUMO2/3 Recombinant Matched Antibody Pair, PBS Only. Capture antibody: 84017-2-PBS. Detection antibody: 84017-1-PBS. Standard: Ag1135. Range: 0.313-40 ng/mL



Bioluminescence resonance energy transfer (BLI) kinetic assay of 84017-1-PBS against Human SUMO3 was performed. The affinity constant is 1.05 nM.