

For Research Use Only

# SUMO2/3 Recombinant antibody, PBS Only

Catalog Number: 84017-5-PBS



## Basic Information

<b>Catalog Number:</b> 84017-5-PBS	<b>GenBank Accession Number:</b> BC008420	<b>Purification Method:</b> Protein A purification
<b>Size:</b> 100ug, Concentration: 1 mg/ml by Nanodrop;	<b>GeneID (NCBI):</b> 6612	<b>CloneNo.:</b> 241156E1
<b>Source:</b> Rabbit	<b>UNIPROT ID:</b> P55854	
<b>Isotype:</b> IgG	<b>Full Name:</b> SMT3 suppressor of mif two 3 homolog 3 (S. cerevisiae)	
<b>Immunogen Catalog Number:</b> AG1135	<b>Calculated MW:</b> 12 kDa	

## Applications

**Tested Applications:**  
IF/ICC, Indirect ELISA

**Species Specificity:**  
human

## Background Information

Ubiquitin is most famous for its function in targeting proteins for degradation by the 26S proteasome, ubiquitin needs to be attached to a substrate in chains (polyubiquitylation) before being recognized by proteasome. Similarly, SUMO (small ubiquitin-related modifier) can be linked to substrates in chains (polysumoylation), SUMO modification has been implicated in many important cellular processes including the control of genome stability, signal transduction, targeting to and formation of nuclear compartments, cell cycle and meiosis. There are 4 confirmed SUMO isoforms in human, SUMO-1, SUMO-2, SUMO-3 and SUMO-4. SUMO-2 and SUMO-3 are nearly identical but are distinct from SUMO-1. SUMO2/3 conjugation was recently widely involved in neuroprotective activities. A substitution (M55V) of SUMO4 was strongly associated with the pathogenesis of type 1 diabetes (T1D) involving NF kappa B related mechanisms.

## Storage

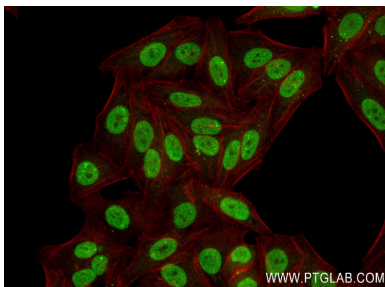
**Storage:**  
Store at -80°C.

**Storage Buffer:**  
PBS Only

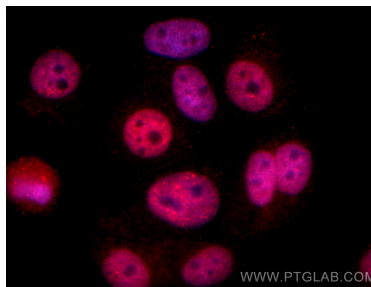
For technical support and original validation data for this product please contact:  
T: 1 (888) 4PTGLAB (1-888-478-4522) (toll free in USA), or 1(312) 455-8498 (outside USA)  
E: [proteintech@ptglab.com](mailto:proteintech@ptglab.com)  
W: [ptglab.com](http://ptglab.com)

This product is exclusively available under Proteintech Group brand and is not available to purchase from any other manufacturer.

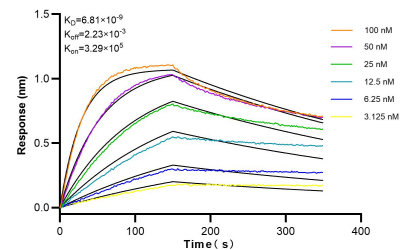
## Selected Validation Data



Immunofluorescent analysis of (4% PFA) fixed HepG2 cells using SUMO3 antibody (84017-5-RR, Clone: 241156E1 ) at dilution of 1:250 and CoraLite®488-Conjugated Goat Anti-Rabbit IgG(H+L) (SA00013-2), CLS94-Phalloidin (red). This data was developed using the same antibody clone with 84017-5-PBS in a different storage buffer formulation.



Immunofluorescent analysis of (4% PFA) fixed HepG2 cells using SUMO2/3 antibody (84017-5-RR, Clone: 241156E1 ) at dilution of 1:500 and CoraLite®594-Conjugated Goat Anti-Rabbit IgG(H+L) (SA00013-4). This data was developed using the same antibody clone with 84017-5-PBS in a different storage buffer formulation.



Biolayer interferometry (BLI) kinetic assays of 84017-5-RR against Human SUMO2/3 were performed. The affinity constant is 6.81 nM.