

For Research Use Only

SUMO2/3 Recombinant antibody

Catalog Number: 84017-5-RR



Basic Information

Catalog Number: 84017-5-RR	GenBank Accession Number: BC008420	Purification Method: Protein A purification
Size: 100ul , Concentration: 1000 ug/ml by Nanodrop;	GeneID (NCBI): 6612	CloneNo.: 241156E1
Source: Rabbit	UNIPROT ID: P55854	Recommended Dilutions: IF/ICC 1:125-1:500
Isotype: IgG	Full Name: SMT3 suppressor of mif two 3 homolog 3 (S. cerevisiae)	
Immunogen Catalog Number: AG1135	Calculated MW: 12 kDa	

Applications

Tested Applications: IF/ICC, ELISA	Positive Controls: IF/ICC : HepG2 cells, A431 cells
Species Specificity: human	

Background Information

Ubiquitin is most famous for its function in targeting proteins for degradation by the 26S proteasome, ubiquitin needs to be attached to a substrate in chains (polyubiquitylation) before being recognized by proteasome. Similarly, SUMO (small ubiquitin-related modifier) can be linked to substrates in chains (polysumoylation), SUMO modification has been implicated in many important cellular processes including the control of genome stability, signal transduction, targeting to and formation of nuclear compartments, cell cycle and meiosis. There are 4 confirmed SUMO isoforms in human, SUMO-1, SUMO-2, SUMO-3 and SUMO-4. SUMO-2 and SUMO-3 are nearly identical but are distinct from SUMO-1. SUMO2/3 conjugation was recently widely involved in neuroprotective activities. A substitution (M55V) of SUMO4 was strongly associated with the pathogenesis of type 1 diabetes (T1D) involving NF kappa B related mechanisms.

Storage

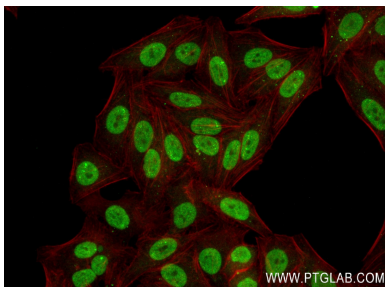
Storage:
Store at -20°C. Stable for one year after shipment.
Storage Buffer:
PBS with 0.02% sodium azide and 50% glycerol pH 7.3.
Aliquoting is unnecessary for -20°C storage

*** 20ul sizes contain 0.1% BSA

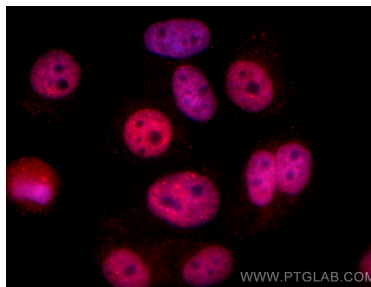
For technical support and original validation data for this product please contact:
T: 1 (888) 4PTGLAB (1-888-478-4522) (toll free in USA), or 1(312) 455-8498 (outside USA)
E: proteintech@ptglab.com
W: ptglab.com

This product is exclusively available under Proteintech Group brand and is not available to purchase from any other manufacturer.

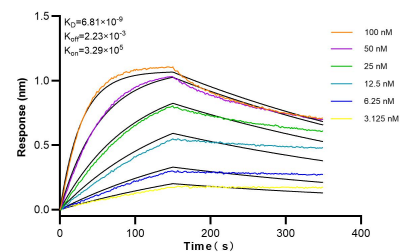
Selected Validation Data



Immunofluorescent analysis of (4% PFA) fixed HepG2 cells using SUMO3 antibody (84017-5-RR, Clone: 241156E1) at dilution of 1:250 and CoraLite®488-Conjugated Goat Anti-Rabbit IgG(H+L) (SA00013-2), CL594-Phalloidin (red).



Immunofluorescent analysis of (4% PFA) fixed HepG2 cells using SUMO2/3 antibody (84017-5-RR, Clone: 241156E1) at dilution of 1:500 and CoraLite®594-Conjugated Goat Anti-Rabbit IgG(H+L) (SA00013-4).



Biolayer interferometry (BLI) kinetic assays of 84017-5-RR against Human SUMO2/3 were performed. The affinity constant is 6.81 nM.