

For Research Use Only

FOXF1 Recombinant antibody

Catalog Number: 84020-3-RR



Basic Information

Catalog Number:

84020-3-RR

Size:

100ul, Concentration: 1000 µg/ml by Nanodrop;

Source:

Rabbit

Isotype:

IgG

Immunogen Catalog Number:

AG34266

GenBank Accession Number:

NP_001442

GeneID (NCBI):

2294

UNIPROT ID:

Q12946

Full Name:

forkhead box F1

Calculated MW:

40 kDa

Observed MW:

40 kDa

Purification Method:

Protein A purification

CloneNo.:

241076C8

Recommended Dilutions:

IF/ICC 1:125-1:500

Applications

Tested Applications:

IF/ICC, FC (Intra), ELISA

Species Specificity:

human

Positive Controls:

IF/ICC : HeLa cells,

Background Information

FOXF1 (Forkhead box protein F1), also known as FKHL5, It is expected to be located in the nucleus, which is expressed predominantly in lung and placenta. FOXF1, a member of the Forkhead box family of transcription factors, as one of the most highly and consistently upregulated genes in FP-RMS. While it is known that FOXF1 is required for mesodermal differentiation toward endothelial and smooth muscle cell lineages, FOXF1 is not expressed in differentiated skeletal muscle cells, and its role in fusion-positive FP-RMS remains unknown (PMID: 33627785). The molecular weight of FOXF1 is 40 kDa.

Storage

Storage:

Store at -20°C. Stable for one year after shipment.

Storage Buffer:

PBS with 0.02% sodium azide and 50% glycerol pH 7.3.

Aliquoting is unnecessary for -20°C storage

*** 20ul sizes contain 0.1% BSA

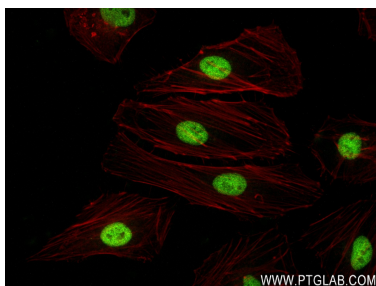
For technical support and original validation data for this product please contact:

T: 1 (888) 4PTGLAB (1-888-478-4522) (toll free in USA), or 1(312) 455-8498 (outside USA)

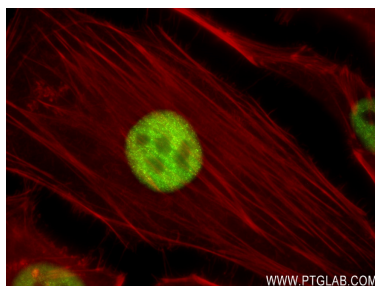
E: proteintech@ptglab.com
W: ptglab.com

This product is exclusively available under Proteintech Group brand and is not available to purchase from any other manufacturer.

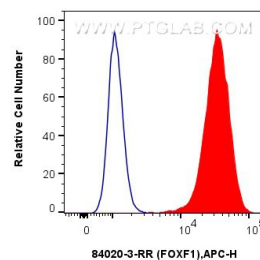
Selected Validation Data



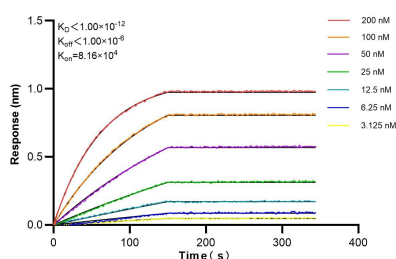
Immunofluorescent analysis of (4% PFA) fixed HeLa cells using FOXF1 antibody (84020-3-RR, Clone: 241076C8) at dilution of 1:250 and CoraLite®488-Conjugated AffiniPure Goat Anti-Rabbit IgG(H+L) (SA00013-2), CL594-Phalloidin (red).



Immunofluorescent analysis of (4% PFA) fixed HeLa cells using FOXF1 antibody (84020-3-RR, Clone: 241076C8) at dilution of 1:250 and CoraLite®488-Conjugated AffiniPure Goat Anti-Rabbit IgG(H+L) (SA00013-2), CL594-Phalloidin (red).



1×10^6 HeLa cells were intracellularly stained with 0.25 μ g FOXF1 Recombinant antibody (84020-3-RR, Clone: 241076C8) and APC-Conjugated Goat Anti-Rabbit IgG(H+L)(red), or 0.25 μ g Isotype Control (blue). Cells were fixed and permeabilized with True-Nuclear Transcription Factor Buffer Set.



Bi-layer interferometry (BLI) kinetic assays of 84020-3-RR against Human FOXF1 were performed. The affinity constant is below 1 pM.