

For Research Use Only

CSF2RA/CD116 Recombinant antibody, PBS Only (Detector)

Catalog Number: 84023-1-PBS



Basic Information

Catalog Number:

84023-1-PBS

Size:

100ug, Concentration: 1 mg/ml by
Nanodrop;

Source:

Rabbit

Isotype:

IgG

GenBank Accession Number:

BC002635

GeneID (NCBI):

1438

UNIPROT ID:

P15509

Full Name:

colony stimulating factor 2 receptor,
alpha, low-affinity (granulocyte-
macrophage)

Calculated MW:

46 kDa

Observed MW:

60-70 kDa

Purification Method:

Protein A purification

CloneNo.:

241266A9

Applications

Tested Applications:

WB, IHC, IF/ICC, Cytometric bead array, Sandwich
ELISA, Indirect ELISA, Sample test

Species Specificity:

human

Product Information

84023-1-PBS targets CSF2RA/CD116 as part of a matched antibody pair:

MP00953-1: 98066-1-PBS capture and 84023-1-PBS detection (validated in Cytometric bead array, Sandwich ELISA)

Unconjugated rabbit recombinant monoclonal antibody in PBS only (BSA and azide free) storage buffer at a concentration of 1 mg/mL, ready for conjugation. Created using Proteintech's proprietary in-house recombinant technology. Recombinant production enables unrivalled batch-to-batch consistency, easy scale-up, and future security of supply.

This conjugation ready format makes antibodies ideal for use in many applications including: ELISAs, multiplex assays requiring matched pairs, mass cytometry, and multiplex imaging applications. Antibody use should be optimized by the end user for each application and assay.

Background Information

CD116, also named as CSF2RA CDw116 CSF2RAX CSF2RAY CSF2RX CSF2RY GM-CSF-R-alpha GMCSFR and GMR, is a low affinity receptor for granulocyte-macrophage colony-stimulating factor. CD116 transduces a signal that results in the proliferation, differentiation, and functional activation of hematopoietic cells.

Storage

Storage:

Store at -80°C.

Storage Buffer:

PBS Only

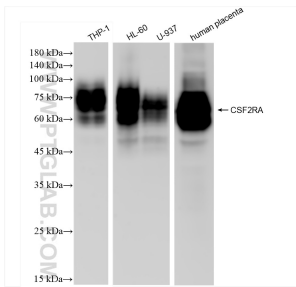
For technical support and original validation data for this product please contact:

T: 1 (888) 4PTGLAB (1-888-478-4522) (toll free
in USA), or 1(312) 455-8498 (outside USA)

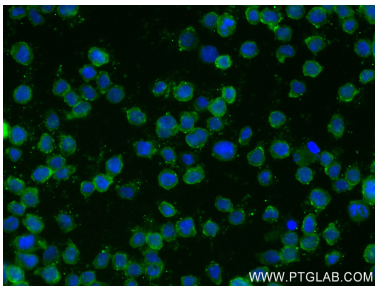
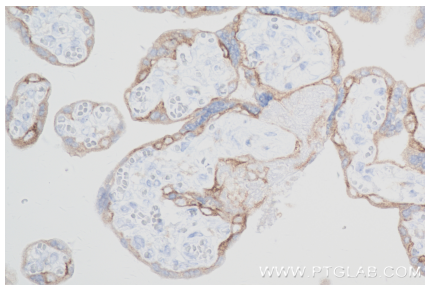
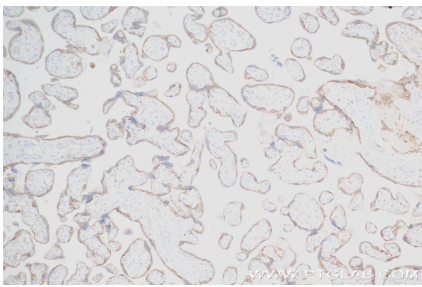
E: proteintech@ptglab.com
W: ptglab.com

This product is exclusively available under Proteintech Group brand and is not available to purchase from any other manufacturer.

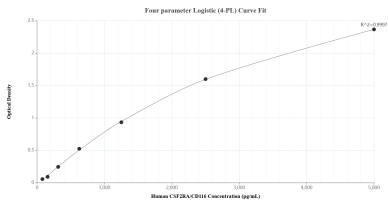
Selected Validation Data



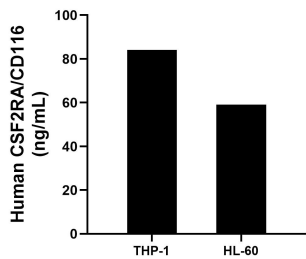
Various lysates were subjected to SDS PAGE followed by western blot with 84023-1-RR (CSF2RA antibody) at dilution of 1:10000 incubated at room temperature for 1.5 hours. This data was developed using the same antibody clone with 84023-1-PBS in a different storage buffer formulation.



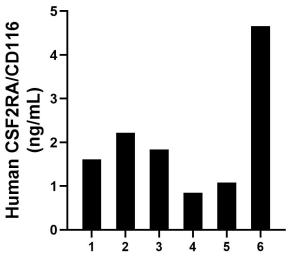
Immunofluorescent analysis of (4% PFA) fixed THP-1 cells using CSF2RA antibody (84023-1-RR, Clone: 241266A9) at dilution of 1:250 and CoraLite@488-Conjugated Goat Anti-Rabbit IgG(H+L) (SA00013-2). This data was developed using the same antibody clone with 84023-1-PBS in a different storage buffer formulation.



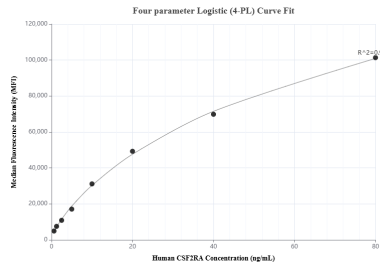
Sandwich ELISA standard curve of MP00953-1, Human CSF2RA/CD116 Recombinant Matched Antibody Pair - PBS only. 98066-1-PBS was coated to a plate as the capture antibody and incubated with serial dilutions of standard RP02335. 84023-1-PBS was HRP conjugated as the detection antibody. Range: 78.1-5000 pg/mL.



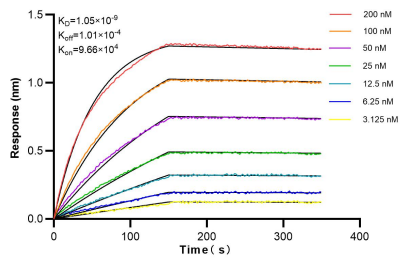
The mean CSF2RA/CD116 concentration was determined to be 84.1 ng/mL in THP-1 cell extract based on a 4.0 mg/mL extract load and 59.0 ng/mL in HL-60 cell extract based on a 5.6 mg/mL extract load.



Serum of six individual healthy human donors was measured. The CSF2RA/CD116 concentration of detected samples was determined to be 2.0 ng/mL with a range of 0.9-4.7 ng/mL.



Cytometric bead array standard curve of MP00953-1, CSF2RA/CD116 Recombinant Matched Antibody Pair, PBS Only. Capture antibody: 98066-1-PBS. Detection antibody: 84023-1-PBS. Standard: RP02335. Range: 0.625-80 ng/mL.



Bi-layer interferometry (BLI) kinetic assays of 84023-1-RR against Human CSF2RA/CD116 were performed. The affinity constant is 1.05 nM.