

For Research Use Only

TMPPE Recombinant antibody

Catalog Number: 84028-2-RR



Basic Information

Catalog Number:

84028-2-RR

Size:

100ul , Concentration: 1000 µg/ml by
Nanodrop;

Source:

Rabbit

Isotype:

IgG

Immunogen Catalog Number:

AG19556

GenBank Accession Number:

BC136873

GeneID (NCBI):

643853

UNIPROT ID:

Q6ZT21

Full Name:

transmembrane protein with
metallophosphoesterase domain

Calculated MW:

453 aa, 49 kDa

Observed MW:

45-50 kDa

Purification Method:

Protein A purification

CloneNo.:

241180C8

Recommended Dilutions:

WB 1:2000-1:10000

Applications

Tested Applications:

WB, ELISA

Species Specificity:

human

Positive Controls:

WB : HepG2 cells, HeLa cells, HEK-293T cells, U-251
cells

Storage

Storage:

Store at -20°C. Stable for one year after shipment.

Storage Buffer:

PBS with 0.02% sodium azide and 50% glycerol pH 7.3.

Aliquoting is unnecessary for -20°C storage

*** 20ul sizes contain 0.1% BSA

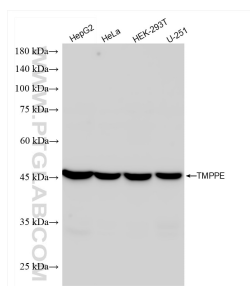
For technical support and original validation data for this product please contact:

T: 1 (888) 4PTGLAB (1-888-478-4522) (toll free
in USA), or 1(312) 455-8498 (outside USA)

E: proteintech@ptglab.com
W: ptglab.com

This product is exclusively available under Proteintech
Group brand and is not available to purchase from any
other manufacturer.

Selected Validation Data



Various lysates were subjected to SDS PAGE followed by western blot with 84028-2-RR (TMPPE antibody) at dilution of 1:5000 incubated at room temperature for 1.5 hours.