

For Research Use Only

# UTP18 Recombinant antibody

Catalog Number: 84035-3-RR



## Basic Information

<b>Catalog Number:</b> 84035-3-RR	<b>GenBank Accession Number:</b> NM_016001	<b>Purification Method:</b> Protein A purification
<b>Size:</b> 100ul , Concentration: 1000 µg/ml by Nanodrop;	<b>GeneID (NCBI):</b> 51096	<b>CloneNo.:</b> 241240F1
<b>Source:</b> Rabbit	<b>UNIPROT ID:</b> Q9Y5J1	<b>Recommended Dilutions:</b> IF/ICC 1:200-1:800
<b>Isotype:</b> IgG	<b>Full Name:</b> UTP18, small subunit (SSU) processome component, homolog (yeast)	
<b>Immunogen Catalog Number:</b> AG34662	<b>Calculated MW:</b> 62 kDa	
	<b>Observed MW:</b> 62 kDa	

## Applications

<b>Tested Applications:</b> IF/ICC, ELISA	<b>Positive Controls:</b> IF/ICC : A431 cells,
<b>Species Specificity:</b> human	

## Background Information

UTP18 (UTP18 small subunit processome component), also known as WDR50. It is expected to be located in nucleus. The protein is one part of the small subunit (SSU) processome, first precursor of the small eukaryotic ribosomal subunit. During the assembly of the SSU processome in the nucleolus, many ribosome biogenesis factors, an RNA chaperone and ribosomal proteins associate with the nascent pre-rRNA and work in concert to generate RNA folding, modifications, rearrangements and cleavage as well as targeted degradation of pre-ribosomal RNA by the RNA exosome. Involved in nucleolar processing of pre-18S ribosomal RNA. The calculated molecular weight of UTP18 is 62 kDa.

## Storage

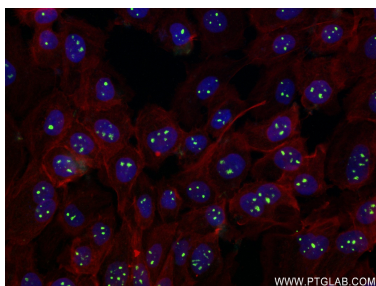
**Storage:**  
Store at -20°C. Stable for one year after shipment.  
**Storage Buffer:**  
PBS with 0.02% sodium azide and 50% glycerol pH 7.3.  
Aliquoting is unnecessary for -20°C storage

\*\*\* 20ul sizes contain 0.1% BSA

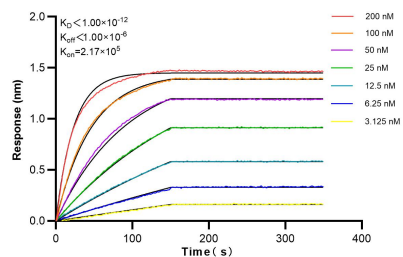
For technical support and original validation data for this product please contact:  
T: 1 (888) 4PTGLAB (1-888-478-4522) (toll free in USA), or 1(312) 455-8498 (outside USA)  
E: [proteintech@ptglab.com](mailto:proteintech@ptglab.com)  
W: [ptglab.com](http://ptglab.com)

This product is exclusively available under Proteintech Group brand and is not available to purchase from any other manufacturer.

## Selected Validation Data



Immunofluorescent analysis of (4% PFA) fixed A431 cells using UTP18 antibody (84035-3-RR, Clone: 241240F1) at dilution of 1:400 and CoraLite®488-Conjugated AffiniPure Goat Anti-Rabbit IgG(H+L) (SA00013-2), CL594-Phalloidin (red).



Biolayer interferometry (BLI) kinetic assays of 84035-3-RR against Human UTP18 were performed. The affinity constant is below 1 pM.