

For Research Use Only

Cytokeratin 3 Recombinant antibody

Catalog Number: 84042-1-RR



Basic Information

Catalog Number: 84042-1-RR	GenBank Accession Number: NM_057088	Purification Method: Protein A purification
Size: 100ul , Concentration: 1000 ug/ml by Nanodrop;	GeneID (NCBI): 3850	CloneNo.: 240932E7
Source: Rabbit	UNIPROT ID: P12035	Recommended Dilutions: WB 1:5000-1:50000
Isotype: IgG	Full Name: keratin 3	
	Calculated MW: 64 kDa	
	Observed MW: 64 kDa	

Applications

Tested Applications: WB, ELISA	Positive Controls: WB : human saliva,
Species Specificity: human	

Background Information

Keratins are a large family of proteins that form the intermediate filament cytoskeleton of epithelial cells, which are classified into two major sequence types. Type I keratins are a group of acidic intermediate filament proteins, including K9-K23, and the hair keratins Ha1-Ha8. Type II keratins are the basic or neutral counterparts to the acidic type I keratins, including K1-K8, and the hair keratins, Hb1-Hb6. As a member of the type II cytokeratin subfamily, KRT3 is expressed together with KRT12 during 'corneal-type' differentiation.

Storage

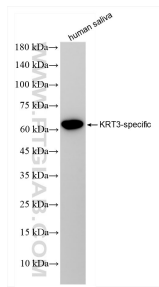
Storage:
Store at -20°C. Stable for one year after shipment.
Storage Buffer:
PBS with 0.02% sodium azide and 50% glycerol, pH7.3
Aliquoting is unnecessary for -20°C storage

*** 20ul sizes contain 0.1% BSA

For technical support and original validation data for this product please contact:
T: 1 (888) 4PTGLAB (1-888-478-4522) (toll free in USA), or 1(312) 455-8498 (outside USA)
E: proteintech@ptglab.com
W: ptglab.com

This product is exclusively available under Proteintech Group brand and is not available to purchase from any other manufacturer.

Selected Validation Data



human saliva were subjected to SDS PAGE followed by western blot with 84042-1-RR (KRT3-specific antibody) at dilution of 1:10000 incubated at room temperature for 1.5 hours.