

For Research Use Only

# HER2/ErbB2,p185-Specific Recombinant antibody, PBS Only

Catalog Number: 84046-1-PBS



## Basic Information

### Catalog Number:

84046-1-PBS

### Size:

100ug , Concentration: 1 mg/ml by  
Nanodrop;

### Source:

Rabbit

### Isotype:

IgG

### GenBank Accession Number:

BC167147

### GeneID (NCBI):

2064

### UNIPROT ID:

P04626

### Full Name:

v-erb-b2 erythroblastic leukemia  
viral oncogene homolog 2,  
neuro/glioblastoma derived  
oncogene homolog (avian)

### Calculated MW:

138 kDa

### Observed MW:

185 kDa

### Purification Method:

Protein A purification

### CloneNo.:

240802C2

## Applications

### Tested Applications:

WB, IHC, IF/ICC, ELISA

### Species Specificity:

human, mouse

## Background Information

HER2, also known as ErbB2 and Neu, is a 185-kDa transmembrane glycoprotein member of the epidermal growth factor (EGF) receptor family of receptor tyrosine kinases. It has no ligand-binding domain and therefore cannot bind growth factors. However, it does bind tightly to other ligand-bound EGF receptor family members to form a heterodimer, stabilizing ligand binding and enhancing kinase-mediated activation of downstream signaling pathways, such as those involving mitogen-activated protein kinase and phosphatidylinositol-3 kinase. Amplification and overexpression of HER2 have been reported in numerous cancers, including breast and ovarian tumors. HER2 is a therapeutic target for the treatment of breast cancer and other carcinomas.

## Storage

### Storage:

Store at -80°C.

### Storage Buffer:

PBS Only

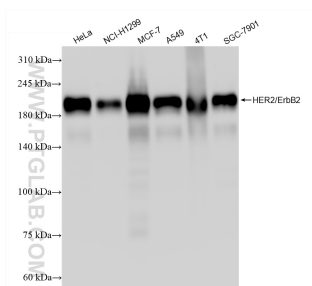
For technical support and original validation data for this product please contact:

T: 1 (888) 4PTGLAB (1-888-478-4522) (toll free  
in USA), or 1(312) 455-8498 (outside USA)

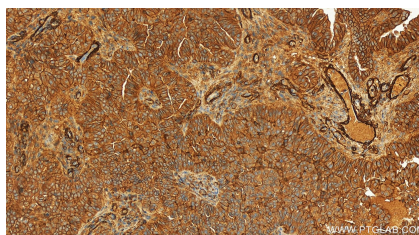
E: [proteintech@ptglab.com](mailto:proteintech@ptglab.com)  
W: [ptglab.com](http://ptglab.com)

This product is exclusively available under Proteintech Group brand and is not available to purchase from any other manufacturer.

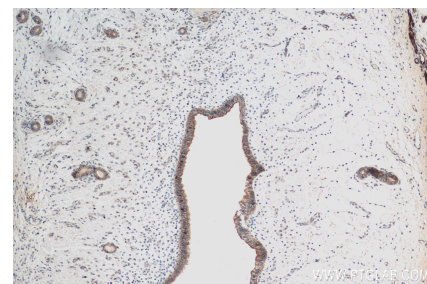
## Selected Validation Data



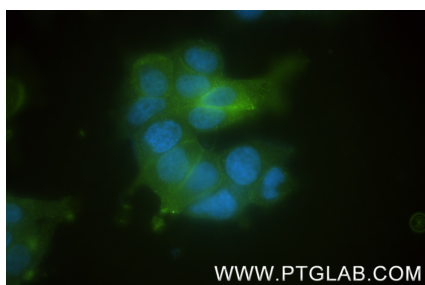
Various lysates were subjected to SDS PAGE followed by western blot with 84046-1-RR (ERBB2,p185-Specific antibody) at dilution of 1:5000 incubated at room temperature for 1.5 hours. This data was developed using the same antibody clone with 84046-1-PBS in a different storage buffer formulation.



Immunohistochemical analysis of paraffin-embedded human ovarian cancer slide using 84046-1-RR (HER2/ErBB2,p185-Specific antibody) at dilution of 1:200 (under 20x lens). Heat mediated antigen retrieval with Tris-EDTA buffer (pH 9.0). This data was developed using the same antibody clone with 84046-1-PBS in a different storage buffer formulation.



Immunohistochemical analysis of paraffin-embedded mouse uterus tissue slide using 84046-1-RR (HER2/ErBB2,p185-Specific antibody) at dilution of 1:200 (under 10x lens). Heat mediated antigen retrieval with Tris-EDTA buffer (pH 9.0). This data was developed using the same antibody clone with 84046-1-PBS in a different storage buffer formulation.



Immunofluorescent analysis of (4% PFA) fixed MCF-7 cells using HER2/ErBB2,p185-Specific antibody (84046-1-RR, Clone: 240802C2 ) at dilution of 1:500 and Coralite®488-Conjugated Goat Anti-Rabbit IgG(H+L) (SA00013-2). This data was developed using the same antibody clone with 84046-1-PBS in a different storage buffer formulation.