

For Research Use Only

TOP2B Recombinant antibody

Catalog Number: 84049-1-RR



Basic Information

Catalog Number: 84049-1-RR	GenBank Accession Number: NM_001068	Purification Method: Protein A purification
Size: 100ul , Concentration: 1000 ug/ml by Nanodrop;	GeneID (NCBI): 7155	CloneNo.: 240949F10
Source: Rabbit	UNIPROT ID: Q02880	Recommended Dilutions: WB 1:5000-1:50000 IF/ICC 1:200-1:800
Isotype: IgG	Full Name: topoisomerase (DNA) II beta 180kDa	
	Calculated MW: 183 kDa	
	Observed MW: 180-190 kDa	

Applications

Tested Applications: WB, IF/ICC, ELISA	Positive Controls:
Species Specificity: human	WB : Jurkat cells, HeLa cells, HepG2 cells, K-562 cells, HEK-293T cells
	IF/ICC : HeLa cells,

Background Information

TOP2B belongs to the type II topoisomerase family. TOP2B control topological states of DNA by transient breakage and subsequent rejoining of DNA strands. TOP2B makes double-strand breaks. It is indirectly involved in vitamin D-coupled transcription regulation via its association with the WINAC complex, a chromatin-remodeling complex recruited by vitamin D receptor (VDR), which is required for the ligand-bound VDR-mediated transrepression of the CYP27B1 gene.

Storage

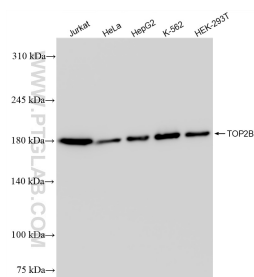
Storage:
Store at -20°C. Stable for one year after shipment.
Storage Buffer:
PBS with 0.02% sodium azide and 50% glycerol pH 7.3.
Aliquoting is unnecessary for -20°C storage

*** 20ul sizes contain 0.1% BSA

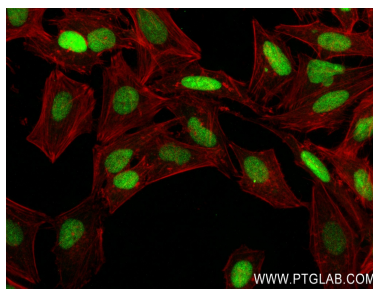
For technical support and original validation data for this product please contact:
T: 1 (888) 4PTGLAB (1-888-478-4522) (toll free in USA), or 1(312) 455-8498 (outside USA)
E: proteintech@ptglab.com
W: ptglab.com

This product is exclusively available under Proteintech Group brand and is not available to purchase from any other manufacturer.

Selected Validation Data



Various lysates were subjected to SDS PAGE followed by western blot with 84049-1-RR (TOP2B antibody) at dilution of 1:10000 incubated at room temperature for 1.5 hours.



Immunofluorescent analysis of (4% PFA) fixed HeLa cells using TOP2B antibody (84049-1-RR, Clone: 240949F10) at dilution of 1:400 and CoraLite® 488-Conjugated AffiniPure Goat Anti-Rabbit IgG(H+L) (SA00013-2), CL594-Phalloidin (red).