

For Research Use Only

GPAM Recombinant antibody, PBS Only (Capture)

Catalog Number: 84054-5-PBS



Basic Information

Catalog Number: 84054-5-PBS	GenBank Accession Number: BC030783	Purification Method: Protein A purification
Size: 100ug , Concentration: 1 mg/ml by Nanodrop;	GeneID (NCBI): 57678	CloneNo.: 241144H6
Source: Rabbit	UNIPROT ID: Q9HCL2	
Isotype: IgG	Full Name: glycerol-3-phosphate acyltransferase, mitochondrial	
Immunogen Catalog Number: AG3120	Calculated MW: 828 aa, 94 kDa	
	Observed MW: 90-92 kDa	

Applications

Tested Applications:
WB, Cytometric bead array, Indirect ELISA

Species Specificity:
human, mouse, rat

Product Information

84054-5-PBS targets GPAM as part of a matched antibody pair:

MP00994-2: 84054-5-PBS capture and 84054-1-PBS detection (validated in Cytometric bead array)

Unconjugated rabbit recombinant monoclonal antibody in PBS only (BSA and azide free) storage buffer at a concentration of 1 mg/mL, ready for conjugation. Created using Proteintech's proprietary in-house recombinant technology. Recombinant production enables unrivalled batch-to-batch consistency, easy scale-up, and future security of supply.

This conjugation ready format makes antibodies ideal for use in many applications including: ELISAs, multiplex assays requiring matched pairs, mass cytometry, and multiplex imaging applications. Antibody use should be optimized by the end user for each application and assay.

Background Information

GPAM (Glycerol-3-Phosphate Acyltransferase, Mitochondrial) is a Protein Coding gene. This gene encodes a mitochondrial enzyme which prefers saturated fatty acids as its substrate for the synthesis of glycerolipids. This metabolic pathway's first step is catalyzed by the encoded enzyme. Two forms for this enzyme exist, one in the mitochondria and one in the endoplasmic reticulum. Two alternatively spliced transcript variants have been described for this gene. Diseases associated with GPAM include Rhizomelic Chondrodysplasia Punctata, Type 2 and Congenital Generalized Lipodystrophy. GPAM can be detected as 90-92 kDa.

Storage

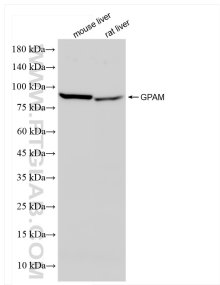
Storage:
Store at -80°C.

Storage Buffer:
PBS Only

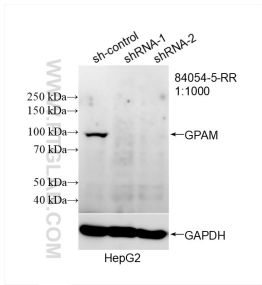
For technical support and original validation data for this product please contact:
T: 1 (888) 4PTGLAB (1-888-478-4522) (toll free in USA), or 1(312) 455-8498 (outside USA)
E: proteintech@ptglab.com
W: ptglab.com

This product is exclusively available under Proteintech Group brand and is not available to purchase from any other manufacturer.

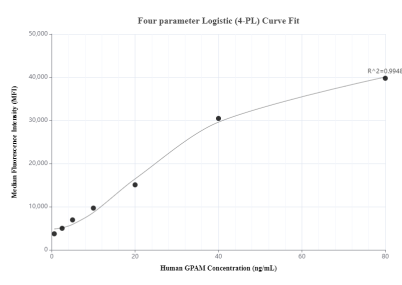
Selected Validation Data



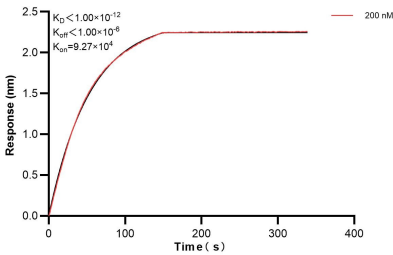
Various lysates were subjected to SDS PAGE followed by western blot with 84054-5-RR (GPAM antibody) at dilution of 1:3000 incubated at room temperature for 1.5 hours. This data was developed using the same antibody clone with 84054-5-PBS in a different storage buffer formulation.



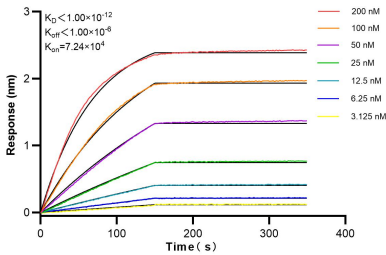
WB result of GPAM antibody (84054-5-RR; 1:1000; incubated at room temperature for 1.5 hours) with sh-Control and sh-GPAM transfected HepG2 cells. This data was developed using the same antibody clone with 84054-5-PBS in a different storage buffer formulation.



Cytometric bead array standard curve of MP00994-2, GPAM Recombinant Matched Antibody Pair, PBS Only. Capture antibody: 84054-5-PBS. Detection antibody: 84054-1-PBS. Standard: Ag3120. Range: 0.625-80 ng/mL.



Biolayer interferometry (BLI) kinetic assay of 84054-5-PBS against Human GPAM was performed. The affinity constant is below 1 pM.



Biolayer interferometry (BLI) kinetic assays of 84054-5-RR against Human GPAM were performed. The affinity constant is below 1 pM.