

For Research Use Only

GPAM Recombinant antibody

Catalog Number: 84054-5-RR



Basic Information

Catalog Number: 84054-5-RR	GenBank Accession Number: BC030783	Purification Method: Protein A purification
Size: 100ul , Concentration: 1000 µg/ml by Nanodrop;	GeneID (NCBI): 57678	CloneNo.: 241144H6
Source: Rabbit	UNIPROT ID: Q9HCL2	Recommended Dilutions: WB 1:1000-1:6000
Isotype: IgG	Full Name: glycerol-3-phosphate acyltransferase, mitochondrial	
Immunogen Catalog Number: AG3120	Calculated MW: 828 aa, 94 kDa	
	Observed MW: 90-92 kDa	

Applications

Tested Applications: WB, ELISA	Positive Controls: WB : mouse liver tissue, HepG2 cells, rat liver tissue
Species Specificity: human, mouse, rat	

Background Information

GPAM (Glycerol-3-Phosphate Acyltransferase, Mitochondrial) is a Protein Coding gene. This gene encodes a mitochondrial enzyme which prefers saturated fatty acids as its substrate for the synthesis of glycerolipids. This metabolic pathway's first step is catalyzed by the encoded enzyme. Two forms for this enzyme exist, one in the mitochondria and one in the endoplasmic reticulum. Two alternatively spliced transcript variants have been described for this gene. Diseases associated with GPAM include Rhizomelic Chondrodysplasia Punctata, Type 2 and Congenital Generalized Lipodystrophy. GPAM can be detected as 90-92 kDa.

Storage

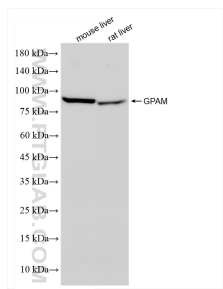
Storage:
Store at -20°C. Stable for one year after shipment.
Storage Buffer:
PBS with 0.02% sodium azide and 50% glycerol pH 7.3.
Aliquoting is unnecessary for -20°C storage

*** 20ul sizes contain 0.1% BSA

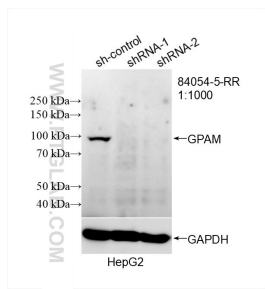
For technical support and original validation data for this product please contact:
T: 1 (888) 4PTGLAB (1-888-478-4522) (toll free in USA), or 1(312) 455-8498 (outside USA)
E: proteintech@ptglab.com
W: ptglab.com

This product is exclusively available under Proteintech Group brand and is not available to purchase from any other manufacturer.

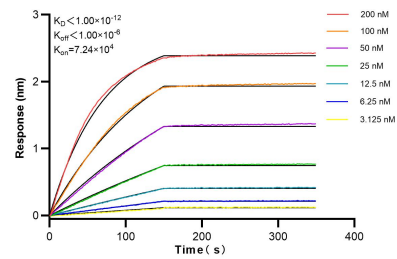
Selected Validation Data



Various lysates were subjected to SDS PAGE followed by western blot with 84054-5-RR (GPAM antibody) at dilution of 1:3000 incubated at room temperature for 1.5 hours.



WB result of GPAM antibody (84054-5-RR; 1:1000; incubated at room temperature for 1.5 hours) with sh-Control and sh-GPAM transfected HepG2 cells.



Biolayer interferometry (BLI) kinetic assays of 84054-5-RR against Human GPAM were performed. The affinity constant is below 1 pM.