

For Research Use Only

LRRK2 Recombinant monoclonal antibody

Catalog Number: 84062-3-RR



Basic Information

Catalog Number: 84062-3-RR	GenBank Accession Number: NM_198578	Purification Method: Protein A purification
Size: 100ul , Concentration: 1000 µg/ml by Nanodrop;	GeneID (NCBI): 120892	CloneNo.: 241258B3
Source: Rabbit	UNIPROT ID: Q55007	Recommended Dilutions: WB: 1:500-1:2000
Isotype: IgG	Full Name: leucine-rich repeat kinase 2	
Immunogen Catalog Number: AG33713	Calculated MW: 286 kDa	
	Observed MW: 286 kDa	

Applications

Tested Applications: WB, ELISA	Positive Controls: WB : A549 cells, RAW 264.7 cells, C6 cells
Species Specificity: human, mouse, rat	

Background Information

Leucine-rich repeat kinase 2 (LRRK2) in humans is encoded by the PARK8/LRRK2 gene. Genetic variations within the LRRK2 gene are linked to a number of diseases, including Parkinson's disease (PD), Crohn's disease and Hansen's disease. The most frequent pathogenic mutations reside in the ROC-COR GTPase (R1441G/C/H, Y1669C) and kinase domains (G2019S, I2020T), indicating important roles for both enzymatic domains in the pathogenicity of LRRK2-driven PD. The G2019S mutation in the Leucine-rich repeat kinase-2 (LRRK2) protein is the most common pathogenic mutation, accounting for 1-6% of sporadic and 3-19% of familial PD. (PMID: 34991886, PMID: 30872638)

Storage

Storage:
Store at -20°C. Stable for one year after shipment.
Storage Buffer:
PBS with 0.02% sodium azide and 50% glycerol, pH7.3
Aliquoting is unnecessary for -20°C storage

*** 20ul sizes contain 0.1% BSA

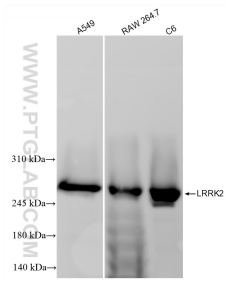
For technical support and original validation data for this product please contact:

T: 1 (888) 4PTGLAB (1-888-478-4522) (toll free in USA), or 1(312) 455-8498 (outside USA)

E: proteintech@ptglab.com
W: ptglab.com

This product is exclusively available under Proteintech Group brand and is not available to purchase from any other manufacturer.

Selected Validation Data



Various lysates were subjected to SDS PAGE followed by western blot with 84062-3-RR (LRRK2 antibody) at dilution of 1:1000 incubated at room temperature for 1.5 hours.