

For Research Use Only

Mouse CD138/Syndecan-1 Recombinant antibody, PBS Only (Capture)

Catalog Number: 84069-3-PBS



Basic Information

Catalog Number: 84069-3-PBS	GenBank Accession Number: NM_011519.2	Purification Method: Protein A purification
Size: 100ug , Concentration: 1 mg/ml by Nanodrop;	GeneID (NCBI): 20969	CloneNo.: 241278E7
Source: Rabbit	UNIPROT ID: P18828-1	
Isotype: IgG	Full Name: syndecan 1	
	Calculated MW: 33 kDa	

Applications

Tested Applications:
Cytometric bead array, Sandwich ELISA, Indirect ELISA, Sample test

Species Specificity:
mouse

Product Information

84069-3-PBS targets CD138/Syndecan-1 as part of a matched antibody pair:

MP00990-1: 84069-3-PBS capture and 84069-5-PBS detection (validated in Cytometric bead array)

MP00990-2: 84069-3-PBS capture and 84069-1-PBS detection (validated in Cytometric bead array, Sandwich ELISA)

Unconjugated rabbit recombinant monoclonal antibody in PBS only (BSA and azide free) storage buffer at a concentration of 1 mg/mL, ready for conjugation. Created using Proteintech's proprietary in-house recombinant technology. Recombinant production enables unrivalled batch-to-batch consistency, easy scale-up, and future security of supply.

This conjugation ready format makes antibodies ideal for use in many applications including: ELISAs, multiplex assays requiring matched pairs, mass cytometry, and multiplex imaging applications. Antibody use should be optimized by the end user for each application and assay.

Storage

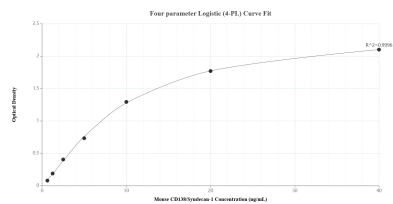
Storage:
Store at -80°C.

Storage Buffer:
PBS only, pH7.3

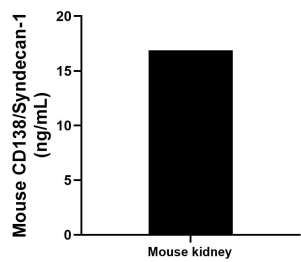
For technical support and original validation data for this product please contact:
T: 1 (888) 4PTGLAB (1-888-478-4522) (toll free in USA), or 1(312) 455-8498 (outside USA)
E: proteintech@ptglab.com
W: ptglab.com

This product is exclusively available under Proteintech Group brand and is not available to purchase from any other manufacturer.

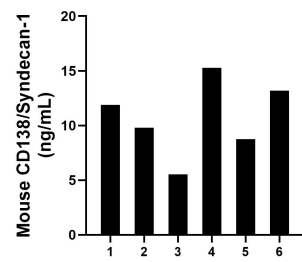
Selected Validation Data



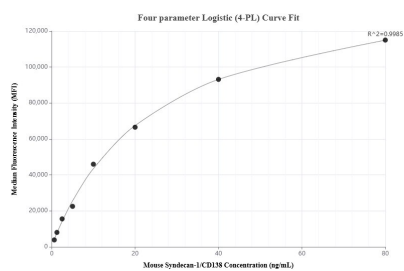
Sandwich ELISA standard curve of MP00990-2, Mouse CD138/Syndecan-1 Recombinant Matched Antibody Pair - PBS only. 84069-3-PBS was coated to a plate as the capture antibody and incubated with serial dilutions of standard Eg1221. 84069-1-PBS was HRP conjugated as the detection antibody. Range: 0.625-40 ng/mL



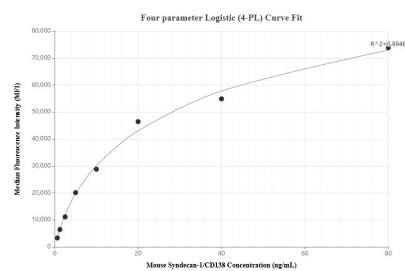
The mean CD138/Syndecan-1 concentration was determined to be 16.88 ng/mL in mouse kidney tissue extract based on a 3.10 mg/mL extract load.



Serum of six mice was measured. The CD138/Syndecan-1 concentration of detected samples was determined to be 10.74 ng/mL with a range of 5.54-15.27 ng/mL.



Cytometric bead array standard curve of MP00990-1, MOUSE CD138/Syndecan-1 Recombinant Matched Antibody Pair, PBS Only. Capture antibody: 84069-3-PBS. Detection antibody: 84069-5-PBS. Standard: Eg1221. Range: 0.625-80 ng/mL



Cytometric bead array standard curve of MP00990-2, MOUSE CD138/Syndecan-1 Recombinant Matched Antibody Pair, PBS Only. Capture antibody: 84069-3-PBS. Detection antibody: 84069-1-PBS. Standard: Eg1221. Range: 0.625-80 ng/mL