

For Research Use Only

CD38 Recombinant antibody

Catalog Number: 84070-1-RR



Basic Information

Catalog Number:

84070-1-RR

Size:

100ul , Concentration: 1000 ug/ml by 952

Nanodrop;

Source:

Rabbit

Isotype:

IgG

GenBank Accession Number:

BC007964

GeneID (NCBI):

952

ENSEMBL Gene ID:

ENSG00000004468

UNIPROT ID:

P28907

Full Name:

CD38 molecule

Calculated MW:

300 aa, 34 kDa

Purification Method:

Protein A purification

CloneNo.:

241246A12

Recommended Dilutions:

IF/ICC 1:125-1:500

Applications

Tested Applications:

IF/ICC, ELISA

Species Specificity:

human

Positive Controls:

IF/ICC : Raji cells,

Storage

Storage:

Store at -20°C. Stable for one year after shipment.

Storage Buffer:

PBS with 0.02% sodium azide and 50% glycerol pH 7.3.

Aliquoting is unnecessary for -20°C storage

*** 20ul sizes contain 0.1% BSA

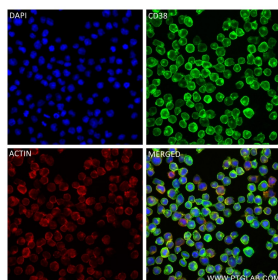
For technical support and original validation data for this product please contact:

T: 1 (888) 4PTGLAB (1-888-478-4522) (toll free
in USA), or 1(312) 455-8498 (outside USA)

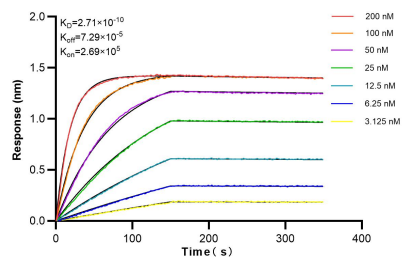
E: proteintech@ptglab.com
W: ptglab.com

This product is exclusively available under Proteintech Group brand and is not available to purchase from any other manufacturer.

Selected Validation Data



Immunofluorescent analysis of (4% PFA) fixed Raji cells using CD38 antibody (84070-1-RR, Clone: 241246A12) at dilution of 1:250 and CoraLite®488-Conjugated Goat Anti-Rabbit IgG(H+L) (SA00013-2), CL594-Phalloidin (red).



Biolayer interferometry (BLI) kinetic assays of 84070-1-RR against Human CD38 were performed. The affinity constant is 0.271 nM.