

For Research Use Only

# Leptin Recombinant antibody, PBS Only (Capture)

Catalog Number: 84072-2-PBS



## Basic Information

<b>Catalog Number:</b> 84072-2-PBS	<b>GenBank Accession Number:</b> BC060830	<b>Purification Method:</b> Protein A purification
<b>Size:</b> 100ug , Concentration: 1 mg/ml by Nanodrop;	<b>GeneID (NCBI):</b> 3952	<b>CloneNo.:</b> 240720C8
<b>Source:</b> Rabbit	<b>UNIPROT ID:</b> P41159	
<b>Isotype:</b> IgG	<b>Full Name:</b> leptin	
	<b>Calculated MW:</b> 167 aa, 19 kDa	

## Applications

**Tested Applications:**  
Cytometric bead array, Sandwich ELISA, Indirect ELISA, Sample test

**Species Specificity:**  
human

## Product Information

84072-2-PBS targets Leptin as part of a matched antibody pair:

MP00993-1: 84072-2-PBS capture and 84072-4-PBS detection (validated in Cytometric bead array, Sandwich ELISA)

MP00993-2: 84072-2-PBS capture and 84072-1-PBS detection (validated in Cytometric bead array)

MP00993-3: 84072-2-PBS capture and 84072-3-PBS detection (validated in Cytometric bead array)

Unconjugated rabbit recombinant monoclonal antibody in PBS only (BSA and azide free) storage buffer at a concentration of 1 mg/mL, ready for conjugation. Created using Proteintech's proprietary in-house recombinant technology. Recombinant production enables unrivalled batch-to-batch consistency, easy scale-up, and future security of supply.

This conjugation ready format makes antibodies ideal for use in many applications including: ELISAs, multiplex assays requiring matched pairs, mass cytometry, and multiplex imaging applications. Antibody use should be optimized by the end user for each application and assay.

## Storage

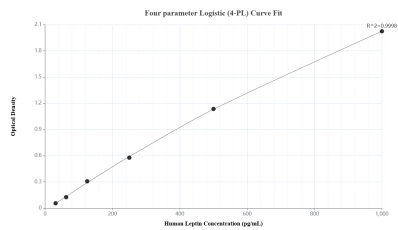
**Storage:**  
Store at -80°C.

**Storage Buffer:**  
PBS Only

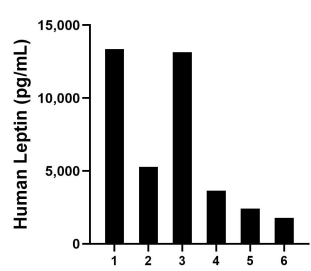
For technical support and original validation data for this product please contact:  
T: 1 (888) 4PTGLAB (1-888-478-4522) (toll free in USA), or 1(312) 455-8498 (outside USA)  
E: [proteintech@ptglab.com](mailto:proteintech@ptglab.com)  
W: [ptglab.com](http://ptglab.com)

This product is exclusively available under Proteintech Group brand and is not available to purchase from any other manufacturer.

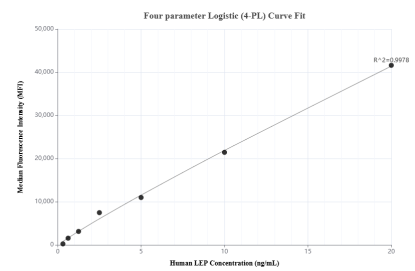
# Selected Validation Data



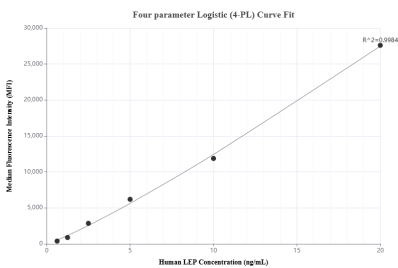
Sandwich ELISA standard curve of MP00993-1, Human Leptin Recombinant Matched Antibody Pair - PBS only. 84072-2-PBS was coated to a plate as the capture antibody and incubated with serial dilutions of standard Eg0834. 84072-4-PBS was HRP conjugated as the detection antibody. Range: 31.3-1000 pg/mL



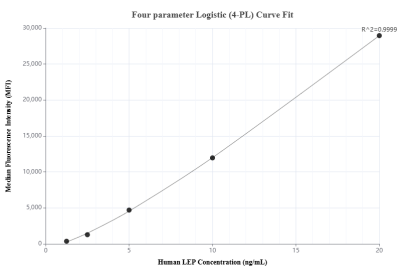
Serum of six individual healthy human donors was measured. The Leptin concentration of detected samples was determined to be 6602.2 pg/mL with a range of 1788.2-13350.2 pg/mL



Cytometric bead array standard curve of MP00993-1, LEP Recombinant Matched Antibody Pair, PBS Only. Capture antibody: 84072-2-PBS. Detection antibody: 84072-4-PBS. Standard: Eg0834. Range: 0.313-20 ng/mL



Cytometric bead array standard curve of MP00993-2, LEP Recombinant Matched Antibody Pair, PBS Only. Capture antibody: 84072-2-PBS. Detection antibody: 84072-1-PBS. Standard: Eg0834. Range: 0.625-20 ng/mL



Cytometric bead array standard curve of MP00993-3, LEP Recombinant Matched Antibody Pair, PBS Only. Capture antibody: 84072-2-PBS. Detection antibody: 84072-3-PBS. Standard: Eg0834. Range: 1.25-20 ng/mL