

For Research Use Only

# Leptin Recombinant antibody, PBS Only

Catalog Number: 84072-5-PBS



## Basic Information

<b>Catalog Number:</b> 84072-5-PBS	<b>GenBank Accession Number:</b> BC060830	<b>Purification Method:</b> Protein A purification
<b>Size:</b> 100ug, Concentration: 1 mg/ml by Nanodrop;	<b>GeneID (NCBI):</b> 3952	<b>CloneNo.:</b> 240720A6
<b>Source:</b> Rabbit	<b>UNIPROT ID:</b> P41159	
<b>Isotype:</b> IgG	<b>Full Name:</b> leptin	
	<b>Calculated MW:</b> 167 aa, 19 kDa	

## Applications

**Tested Applications:**  
IF/ICC, FC (Intra), Indirect ELISA

**Species Specificity:**  
human

## Background Information

Leptin is a protein that is secreted by white adipocytes, and which plays a major role in the regulation of body weight. Leptin is the most critical hormone in the homeostatic regulation of energy balance among those so far discovered. Leptin primarily acts on the neurons of the mediobasal part of hypothalamus to regulate food intake, thermogenesis, and the blood glucose level. Leptin also has several endocrine functions, and is involved in the regulation of immune and inflammatory responses, hematopoiesis, angiogenesis and wound healing. Mutations in this gene and/or its regulatory regions cause severe obesity, and morbid obesity with hypogonadism. Leptin has also been linked to type 2 diabetes mellitus development.

## Storage

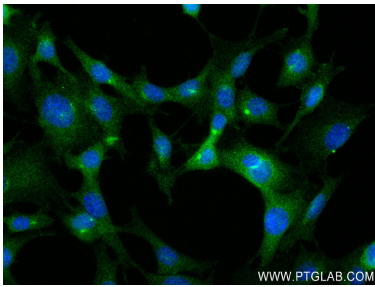
**Storage:**  
Store at -80°C.

**Storage Buffer:**  
PBS Only

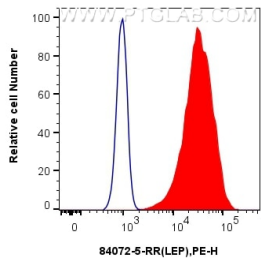
For technical support and original validation data for this product please contact:  
T: 1 (888) 4PTGLAB (1-888-478-4522) (toll free in USA), or 1(312) 455-8498 (outside USA)  
E: [proteintech@ptglab.com](mailto:proteintech@ptglab.com)  
W: [ptglab.com](http://ptglab.com)

This product is exclusively available under Proteintech Group brand and is not available to purchase from any other manufacturer.

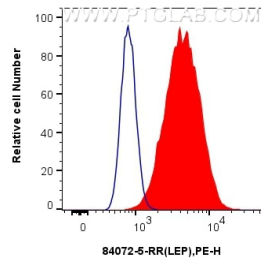
Selected Validation Data



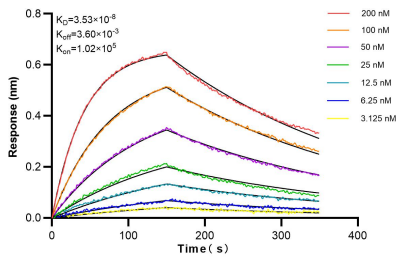
Immunofluorescent analysis of (4% PFA) fixed 3T3-L1 cells using LEP antibody (84072-5-RR, Clone: 240720A6) at dilution of 1:250 and CoraLite®488-Conjugated Goat Anti-Rabbit IgG(H+L) (SA00013-2). This data was developed using the same antibody clone with 84072-5-PBS in a different storage buffer formulation.



1x10<sup>6</sup> HeLa cells were intracellularly stained with 0.25 ug LEP Recombinant antibody (84072-5-RR, Clone:240720A6) and APC-Conjugated Goat Anti-Rabbit IgG(H+L)(red), or 0.25 ug Isotype Control (blue). Cells were fixed with 4% PFA and permeabilized with Flow Cytometry Perm Buffer (PF00011-C). This data was developed using the same antibody clone with 84072-5-PBS in a different storage buffer formulation.



1x10<sup>6</sup> HepG2 cells were intracellularly stained with 0.25 ug LEP Recombinant antibody (84072-5-RR, Clone:240720A6) and APC-Conjugated Goat Anti-Rabbit IgG(H+L)(red), or 0.25 ug Isotype Control (blue). Cells were fixed with 4% PFA and permeabilized with Flow Cytometry Perm Buffer (PF00011-C). This data was developed using the same antibody clone with 84072-5-PBS in a different storage buffer formulation.



Biolayer interferometry (BLI) kinetic assays of 84072-5-RR against Human LEP were performed. The affinity constant is 35.3 nM.