

For Research Use Only

Leptin Recombinant antibody

Catalog Number: 84072-5-RR



Basic Information

Catalog Number: 84072-5-RR	GenBank Accession Number: BC060830	Purification Method: Protein A purification
Size: 100ul , Concentration: 1000 µg/ml by Nanodrop;	GeneID (NCBI): 3952	CloneNo.: 240720A6
Source: Rabbit	UNIPROT ID: P41159	Recommended Dilutions: IF/ICC 1:125-1:500
Isotype: IgG	Full Name: leptin	
	Calculated MW: 167 aa, 19 kDa	

Applications

Tested Applications: IF/ICC, FC (Intra), ELISA	Positive Controls: IF/ICC : 3T3-L1 cells,
Species Specificity: human	

Background Information

Leptin is a protein that is secreted by white adipocytes, and which plays a major role in the regulation of body weight. Leptin is the most critical hormone in the homeostatic regulation of energy balance among those so far discovered. Leptin primarily acts on the neurons of the mediobasal part of hypothalamus to regulate food intake, thermogenesis, and the blood glucose level. Leptin also has several endocrine functions, and is involved in the regulation of immune and inflammatory responses, hematopoiesis, angiogenesis and wound healing. Mutations in this gene and/or its regulatory regions cause severe obesity, and morbid obesity with hypogonadism. Leptin has also been linked to type 2 diabetes mellitus development.

Storage

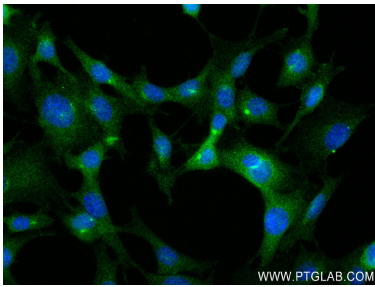
Storage:
Store at -20°C. Stable for one year after shipment.
Storage Buffer:
PBS with 0.02% sodium azide and 50% glycerol pH 7.3.
Aliquoting is unnecessary for -20°C storage

*** 20ul sizes contain 0.1% BSA

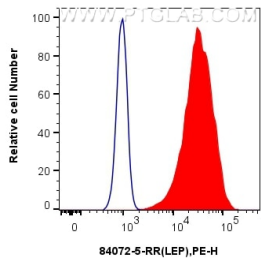
For technical support and original validation data for this product please contact:
T: 1 (888) 4PTGLAB (1-888-478-4522) (toll free in USA), or 1(312) 455-8498 (outside USA)
E: proteintech@ptglab.com
W: ptglab.com

This product is exclusively available under Proteintech Group brand and is not available to purchase from any other manufacturer.

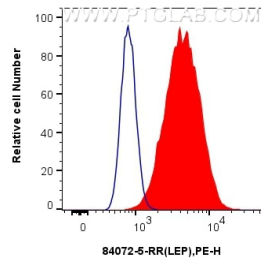
Selected Validation Data



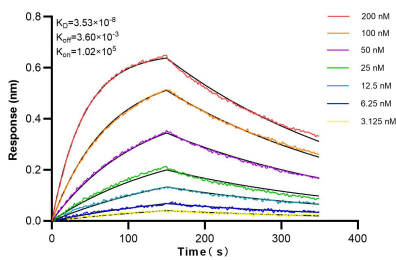
Immunofluorescent analysis of (4% PFA) fixed 3T3-L1 cells using LEP antibody (84072-5-RR, Clone: 240720A6) at dilution of 1:250 and CoraLite®488-Conjugated Goat Anti-Rabbit IgG(H+L) (SA00013-2).



1x10⁶ HeLa cells were intracellularly stained with 0.25 ug LEP Recombinant antibody (84072-5-RR, Clone:240720A6) and APC-Conjugated Goat Anti-Rabbit IgG(H+L)(red), or 0.25 ug Isotype Control (blue). Cells were fixed with 4% PFA and permeabilized with Flow Cytometry Perm Buffer (PF00011-C).



1x10⁶ HepG2 cells were intracellularly stained with 0.25 ug LEP Recombinant antibody (84072-5-RR, Clone:240720A6) and APC-Conjugated Goat Anti-Rabbit IgG(H+L)(red), or 0.25 ug Isotype Control (blue). Cells were fixed with 4% PFA and permeabilized with Flow Cytometry Perm Buffer (PF00011-C).



Biolayer interferometry (BLI) kinetic assays of 84072-5-RR against Human LEP were performed. The affinity constant is 35.3 nM.