

For Research Use Only

# EPCAM/CD326 Recombinant antibody, PBS Only

Catalog Number: 84073-6-PBS



## Basic Information

<b>Catalog Number:</b> 84073-6-PBS	<b>GenBank Accession Number:</b> NM_002354.3	<b>Purification Method:</b> Protein A purification
<b>Size:</b> 100ug , Concentration: 1 mg/ml by Nanodrop;	<b>GeneID (NCBI):</b> 4072	<b>CloneNo.:</b> 241243B10
<b>Source:</b> Rabbit	<b>UNIPROT ID:</b> P16422	
<b>Isotype:</b> IgG	<b>Full Name:</b> epithelial cell adhesion molecule	
<b>Immunogen Catalog Number:</b> EG1370	<b>Calculated MW:</b> 35 kDa	
	<b>Observed MW:</b> 35-40 kDa	

## Applications

**Tested Applications:**  
WB, IHC, IF/ICC, Indirect ELISA

**Species Specificity:**  
human

## Background Information

Epithelial cell adhesion molecule (EpCAM, CD326) is a type I transmembrane glycoprotein that functions as a homophilic, epithelial-specific intercellular cell-adhesion molecule. In addition to cell adhesion, EpCAM is also involved in cellular signaling, cell migration, proliferation, and differentiation. EpCAM is highly expressed on most carcinomas and therefore of potential use as a diagnostic and prognostic marker for a variety of carcinomas, and has become a therapeutic target. EpCAM may occur in distinct forms due to glycosylation. (PMID: 20837599; 19249674; 21576002; 22647938; 12691820)

## Storage

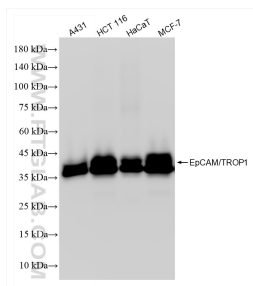
**Storage:**  
Store at -80°C.

**Storage Buffer:**  
PBS only, pH7.3

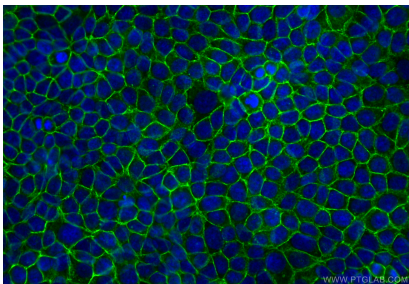
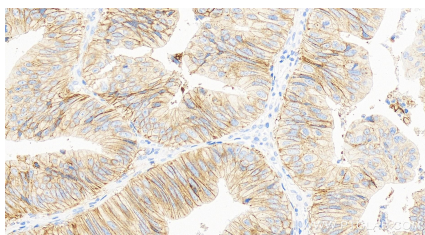
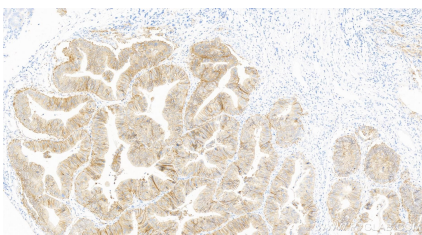
For technical support and original validation data for this product please contact:  
T: 1 (888) 4PTGLAB (1-888-478-4522) (toll free in USA), or 1(312) 455-8498 (outside USA)  
E: [proteintech@ptglab.com](mailto:proteintech@ptglab.com)  
W: [ptglab.com](http://ptglab.com)

This product is exclusively available under Proteintech Group brand and is not available to purchase from any other manufacturer.

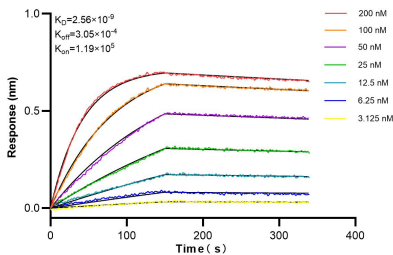
## Selected Validation Data



Various lysates were subjected to SDS PAGE followed by western blot with 84073-6-RR (EPCAM/CD326 antibody) at dilution of 1:10000 incubated at room temperature for 1.5 hours. This data was developed using the same antibody clone with 84073-6-PBS in a different storage buffer formulation.



Immunofluorescent analysis of (-20°C Methanol) fixed MCF-7 cells using EPCAM/CD326 antibody (84073-6-RR, Clone: 241243B10) at dilution of 1:400 and CoraLite®488-Conjugated Goat Anti-Rabbit IgG(H+L) (SA00013-2). This data was developed using the same antibody clone with 84073-6-PBS in a different storage buffer formulation.



Biolayer interferometry (BLI) kinetic assays of 84073-6-RR against Human EPCAM/CD326 were performed. The affinity constant is 2.56 nM.