

For Research Use Only

EPCAM/CD326 Recombinant antibody

Catalog Number: 84073-6-RR

1 Publications



Basic Information

Catalog Number:	84073-6-RR	GenBank Accession Number:	NM_002354.3	Purification Method:	Protein A purification
Size:	100ul , Concentration: 1000 ug/ml by Nanodrop;	GeneID (NCBI):	4072	CloneNo.:	241243B10
Source:	Rabbit	UNIPROT ID:	P16422	Recommended Dilutions:	WB 1:5000-1:50000 IHC 1:500-1:2000 IF/ICC 1:200-1:800
Isotype:	IgG	Full Name:	epithelial cell adhesion molecule		
Immunogen Catalog Number:	EG1370	Calculated MW:	35 kDa		
		Observed MW:	35-40 kDa		

Applications

Tested Applications:	WB, IHC, IF/ICC, ELISA	Positive Controls:	
Cited Applications:	IF	WB :	A431 cells, HCT 116 cells, HaCaT cells, MCF-7 cells
Species Specificity:	human	IHC :	human ovary cancer tissue,
Cited Species:	human	IF/ICC :	MCF-7 cells,
Note-IHC: suggested antigen retrieval with TE buffer pH 9.0; (*) Alternatively, antigen retrieval may be performed with citrate buffer pH 6.0			

Background Information

Epithelial cell adhesion molecule (EpCAM, CD326) is a type I transmembrane glycoprotein that functions as a homophilic, epithelial-specific intercellular cell-adhesion molecule. In addition to cell adhesion, EpCAM is also involved in cellular signaling, cell migration, proliferation, and differentiation. EpCAM is highly expressed on most carcinomas and therefore of potential use as a diagnostic and prognostic marker for a variety of carcinomas, and has become a therapeutic target. EpCAM may occur in distinct forms due to glycosylation. (PMID: 20837599; 19249674; 21576002; 22647938; 12691820)

Notable Publications

Author	Pubmed ID	Journal	Application
Wenzhao Su	39558398	J Transl Med	IF

Storage

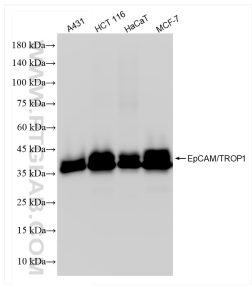
Storage:
Store at -20°C. Stable for one year after shipment.
Storage Buffer:
PBS with 0.02% sodium azide and 50% glycerol, pH7.3
Aliquoting is unnecessary for -20°C storage

*** 20ul sizes contain 0.1% BSA

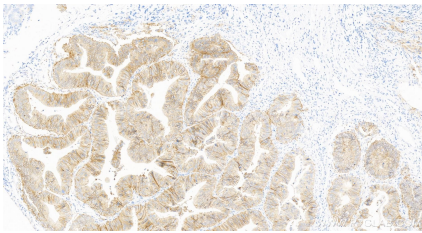
For technical support and original validation data for this product please contact:
T: 1 (888) 4PTGLAB (1-888-478-4522) (toll free in USA), or 1(312) 455-8498 (outside USA)
E: proteintech@ptglab.com
W: ptglab.com

This product is exclusively available under Proteintech Group brand and is not available to purchase from any other manufacturer.

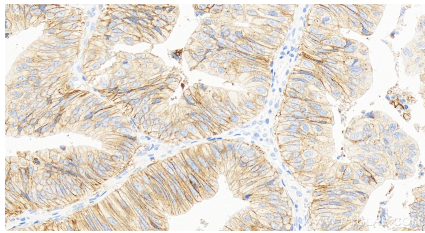
Selected Validation Data



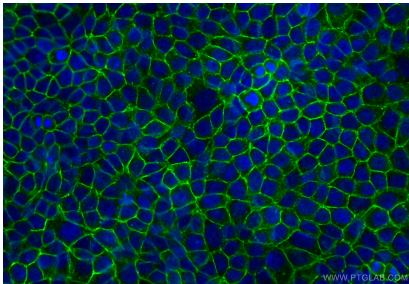
Various lysates were subjected to SDS PAGE followed by western blot with 84073-6-RR (EPCAM/CD326 antibody) at dilution of 1:10000 incubated at room temperature for 1.5 hours.



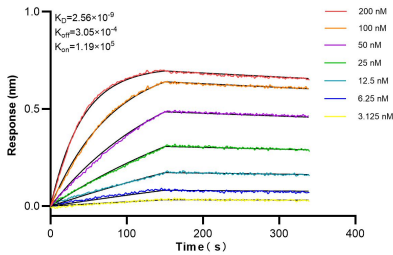
Immunohistochemical analysis of paraffin-embedded human ovary cancer tissue slide using 84073-6-RR (EPCAM/CD326 antibody) at dilution of 1:1000 (under 10x lens). Heat mediated antigen retrieval with Tris-EDTA buffer (pH 9.0).



Immunohistochemical analysis of paraffin-embedded human ovary cancer tissue slide using 84073-6-RR (EPCAM/CD326 antibody) at dilution of 1:1000 (under 40x lens). Heat mediated antigen retrieval with Tris-EDTA buffer (pH 9.0).



Immunofluorescent analysis of (-20°C Methanol) fixed MCF-7 cells using EPCAM/CD326 antibody (84073-6-RR, Clone: 241243B10) at dilution of 1:400 and CoraLite®488-Conjugated Goat Anti-Rabbit IgG(H+L) (SA00013-2).



Biolayer interferometry (BLI) kinetic assays of 84073-6-RR against Human EPCAM/CD326 were performed. The affinity constant is 2.56 nM.