

For Research Use Only

EpCAM/TROP1 Recombinant antibody, PBS Only (Capture)

Catalog Number: 84073-7-PBS



Basic Information

Catalog Number: 84073-7-PBS	GenBank Accession Number: NM_002354.3	Purification Method: Protein A purification
Size: 100ug , Concentration: 1 mg/ml by Nanodrop;	GeneID (NCBI): 4072	CloneNo.: 241243F8
Source: Rabbit	UNIPROT ID: P16422	
Isotype: IgG	Full Name: epithelial cell adhesion molecule	
	Calculated MW: 35 kDa	

Applications

Tested Applications:
Sandwich ELISA, Indirect ELISA, Sample test

Species Specificity:
human

Product Information

84073-7-PBS targets EpCAM/TROP1 as part of a matched antibody pair:

MP01009-4: 84073-7-PBS capture and 84073-4-PBS detection (validated in Sandwich ELISA)

Unconjugated rabbit recombinant monoclonal antibody in PBS only (BSA and azide free) storage buffer at a concentration of 1 mg/mL, ready for conjugation. Created using Proteintech's proprietary in-house recombinant technology. Recombinant production enables unrivalled batch-to-batch consistency, easy scale-up, and future security of supply.

This conjugation ready format makes antibodies ideal for use in many applications including: ELISAs, multiplex assays requiring matched pairs, mass cytometry, and multiplex imaging applications. Antibody use should be optimized by the end user for each application and assay.

Storage

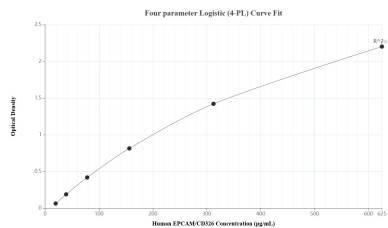
Storage:
Store at -80°C.

Storage Buffer:
PBS Only

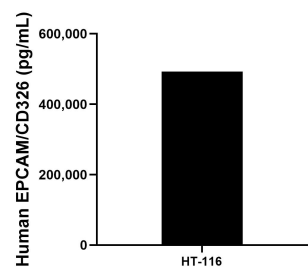
For technical support and original validation data for this product please contact:
T: 1 (888) 4PTGLAB (1-888-478-4522) (toll free in USA), or 1(312) 455-8498 (outside USA)
E: proteintech@ptglab.com
W: ptglab.com

This product is exclusively available under Proteintech Group brand and is not available to purchase from any other manufacturer.

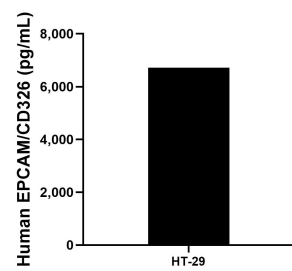
Selected Validation Data



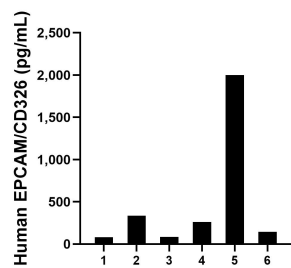
Sandwich ELISA standard curve of MP01009-4, Human EPCAM/CD326 Recombinant Matched Antibody Pair - PBS only. 84073-7-PBS was coated to a plate as the capture antibody and incubated with serial dilutions of standard Eg1370. 84073-4-PBS was HRP conjugated as the detection antibody. Range: 19.5-625 pg/mL.



The mean EPCAM/CD326 concentration was determined to be 492922.2 pg/mL in HT-116 cell extract based on a 2.0 mg/mL extract load.



HT-29 were cultured in DMEM supplemented with 10% fetal bovine serum, 2.5 mM L-glutamine, 100 U/mL penicillin, and 100 µg/mL streptomycin sulfate. An aliquot of the cell culture supernate was removed, assayed for human EPCAM/CD326, and measured 6718.5 pg/mL.



Serum of six individual healthy human donors was measured. The EPCAM/CD326 concentration of detected samples was determined to be 484.9 pg/mL with a range of 81.5-2002.2 pg/mL.