

For Research Use Only

ISLR2 Recombinant antibody

Catalog Number: 84076-3-RR



Basic Information

Catalog Number: 84076-3-RR	GenBank Accession Number: BC152429	Purification Method: Protein A purification
Size: 100ul , Concentration: 1000 µg/ml by Nanodrop;	GeneID (NCBI): 57611	CloneNo.: 241227D6
Source: Rabbit	UNIPROT ID: Q6UXX2	Recommended Dilutions: WB 1:2000-1:10000 IHC 1:50-1:500
Isotype: IgG	Full Name: immunoglobulin superfamily containing leucine-rich repeat 2	
Immunogen Catalog Number: AG20505	Calculated MW: 745 aa, 79 kDa Observed MW: 79 kDa, 130 kDa	

Applications

Tested Applications: WB, IHC, ELISA	Positive Controls:
Species Specificity: human, mouse, rat	WB : mouse brain tissue, rat brain tissue IHC : mouse brain tissue,
Note-IHC: suggested antigen retrieval with TE buffer pH 9.0; (*) Alternatively, antigen retrieval may be performed with citrate buffer pH 6.0	

Background Information

ISLR2 (immunoglobulin superfamily containing leucine rich repeat 2), also known as LINX. It is expected to be located in cell membrane and the protein is mainly expressed in brain and testis. While the first knockout mouse had impaired development of the internal capsule and no hydrocephalus, a much more recent independent knockout mouse was shown to additionally have severe hydrocephalus. Although the mechanism remains unclear, it may be related to the role of ISLR2 in reorganizing the cytoskeleton of developing neurons (PMID: 30483960). The calculated molecular weight of ISLR2 is 79 kDa, this target has phosphorylation modification and glycosylation modification. And the 130 kDa band is glycosylated (PMID: 29739947).

Storage

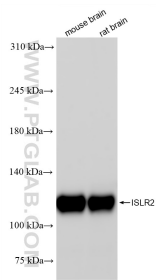
Storage:
Store at -20°C. Stable for one year after shipment.
Storage Buffer:
PBS with 0.02% sodium azide and 50% glycerol, pH7.3
Aliquoting is unnecessary for -20°C storage

*** 20ul sizes contain 0.1% BSA

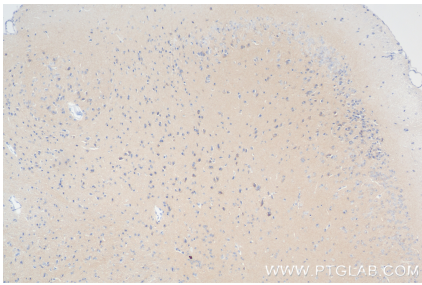
For technical support and original validation data for this product please contact:
T: 1 (888) 4PTGLAB (1-888-478-4522) (toll free in USA), or 1(312) 455-8498 (outside USA)
E: proteintech@ptglab.com
W: ptglab.com

This product is exclusively available under Proteintech Group brand and is not available to purchase from any other manufacturer.

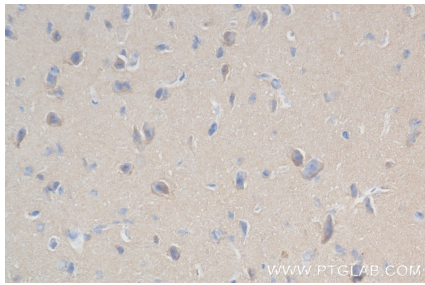
Selected Validation Data



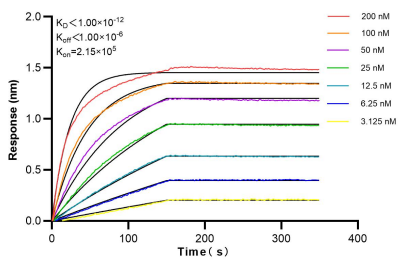
Various lysates were subjected to SDS PAGE followed by western blot with 84076-3-RR (ISLR2 antibody) at dilution of 1:5000 incubated at room temperature for 1.5 hours.



Immunohistochemical analysis of paraffin-embedded mouse brain tissue slide using 84076-3-RR (ISLR2 antibody) at dilution of 1:200 (under 10x lens). Heat mediated antigen retrieval with Tris-EDTA buffer (pH 9.0).



Immunohistochemical analysis of paraffin-embedded mouse brain tissue slide using 84076-3-RR (ISLR2 antibody) at dilution of 1:200 (under 40x lens). Heat mediated antigen retrieval with Tris-EDTA buffer (pH 9.0).



Biolayer interferometry (BLI) kinetic assays of 84076-3-RR against Human ISLR2 were performed. The affinity constant is below 1 pM.